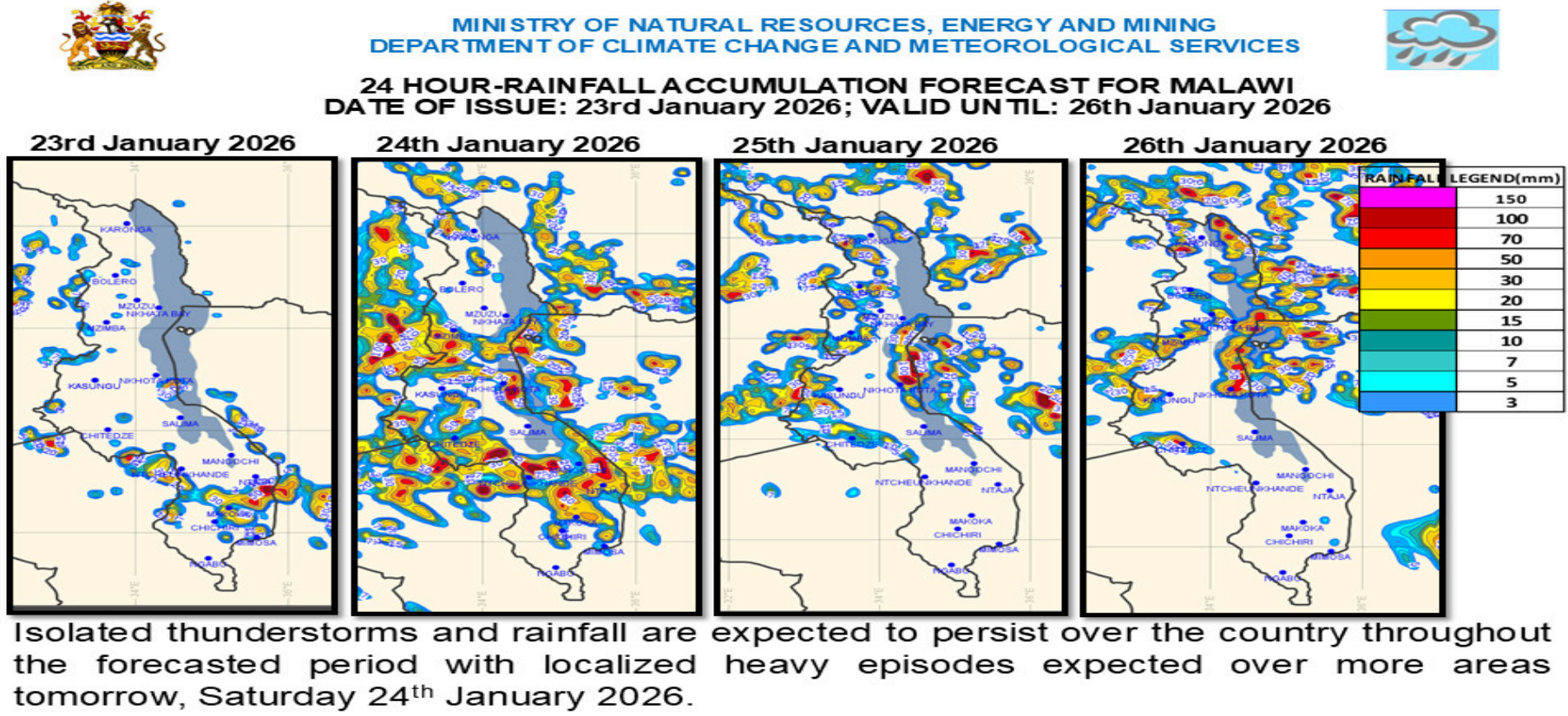




Heavy Thunderstorms and Rain Over T/A Malili (Chinsapo)  
24<sup>th</sup> to 25<sup>th</sup> January, 2026

24 HOUR RAINFALL FORECAST



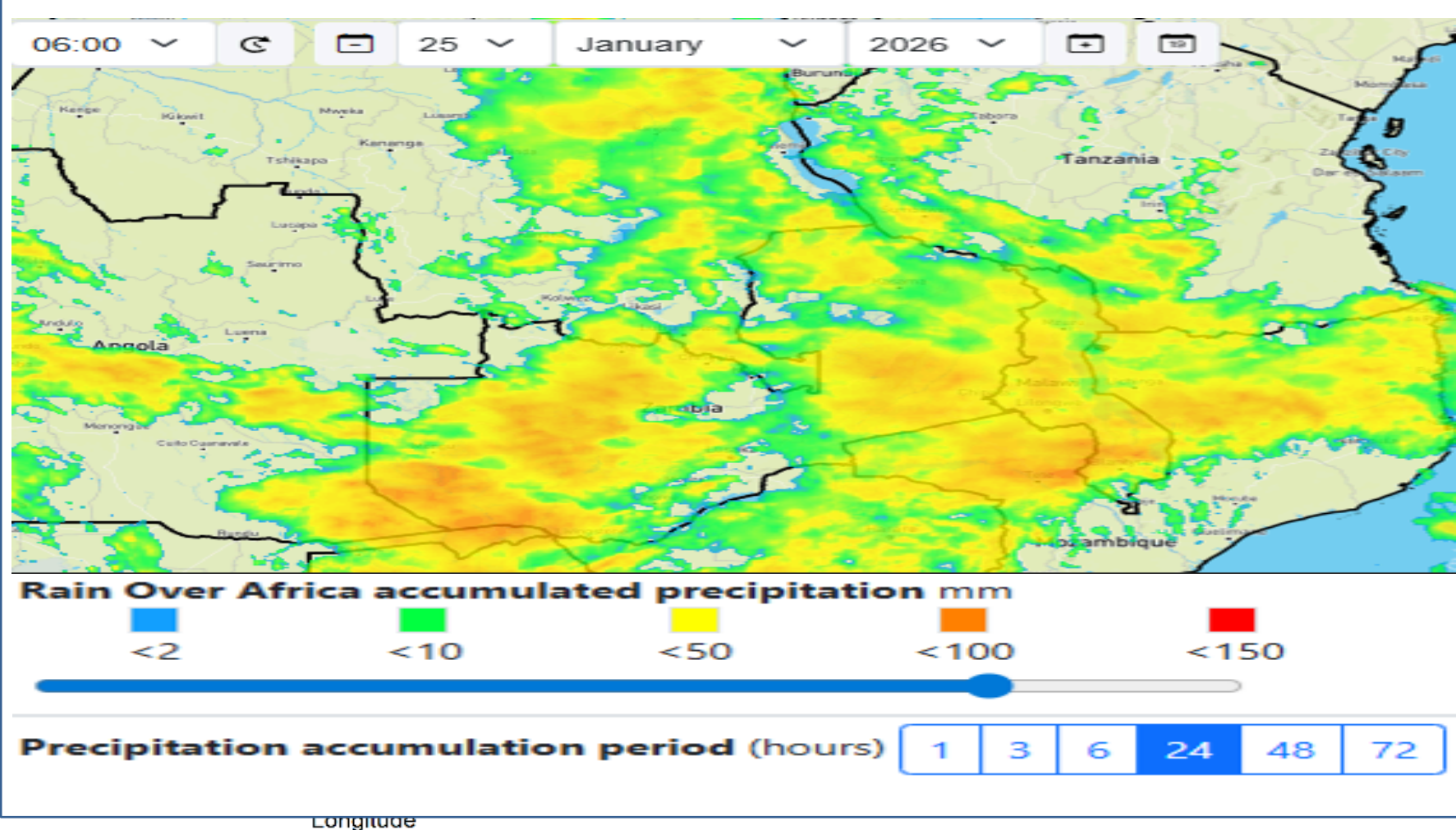
Flooded Waters in Houses



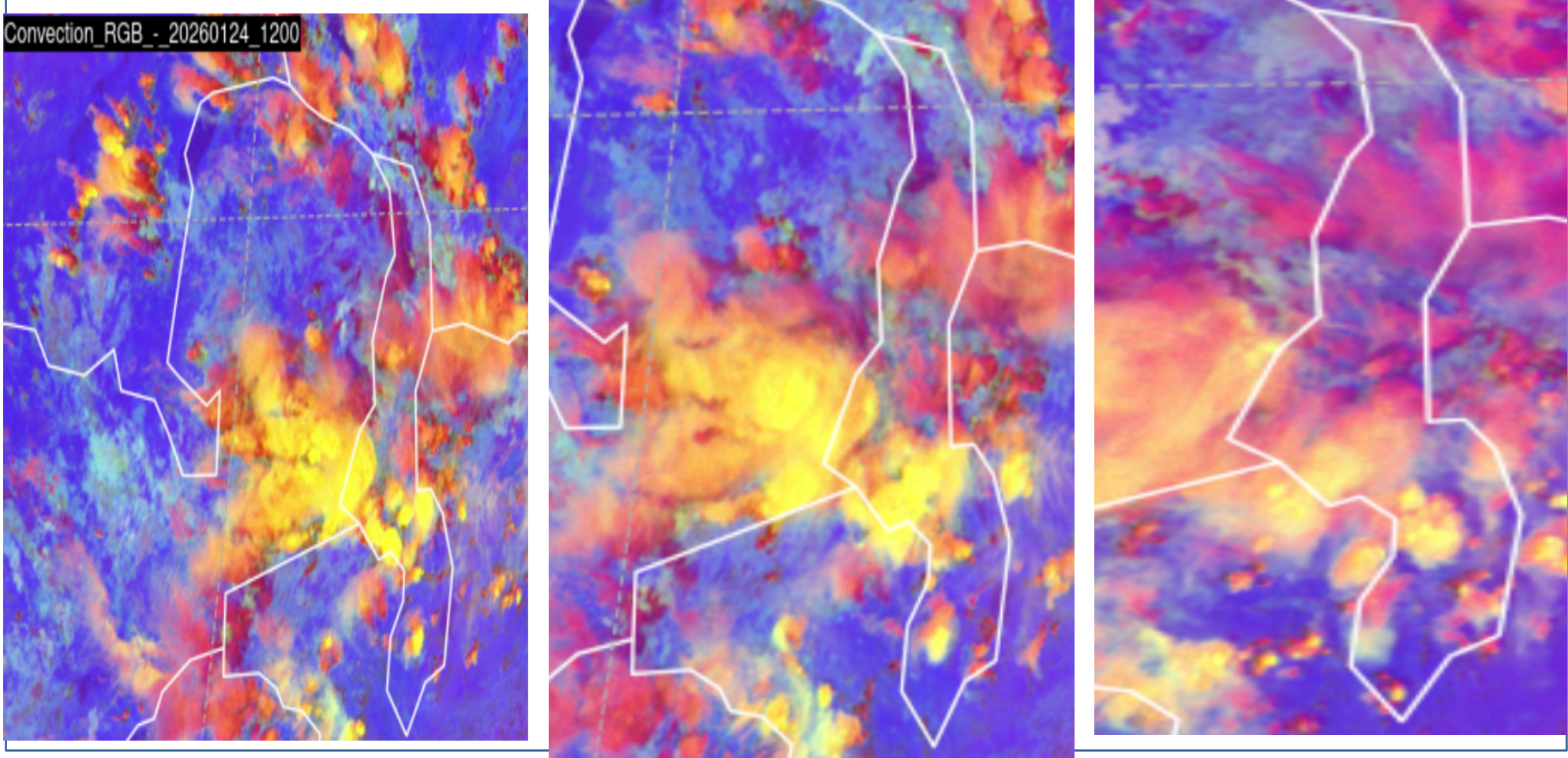
Weather System

According to the forecast released by the DCCMS, the Inter-Tropical Convergence Zone (ITCZ) triggered the intense rainfall in Chinsapo and surrounding areas (T/A Malili). 24 hour satellite rainfall data from Chinsapo between 24-25 January, 2026 showed the area received rainfall about 50 mm. The rains covered most areas of the country including Lilongwe. The storm came developed and got matured and spread from 13:30 hours through 16:00 hours when it dissipated. Convection RGB Satellite images show the storm progression in the area.

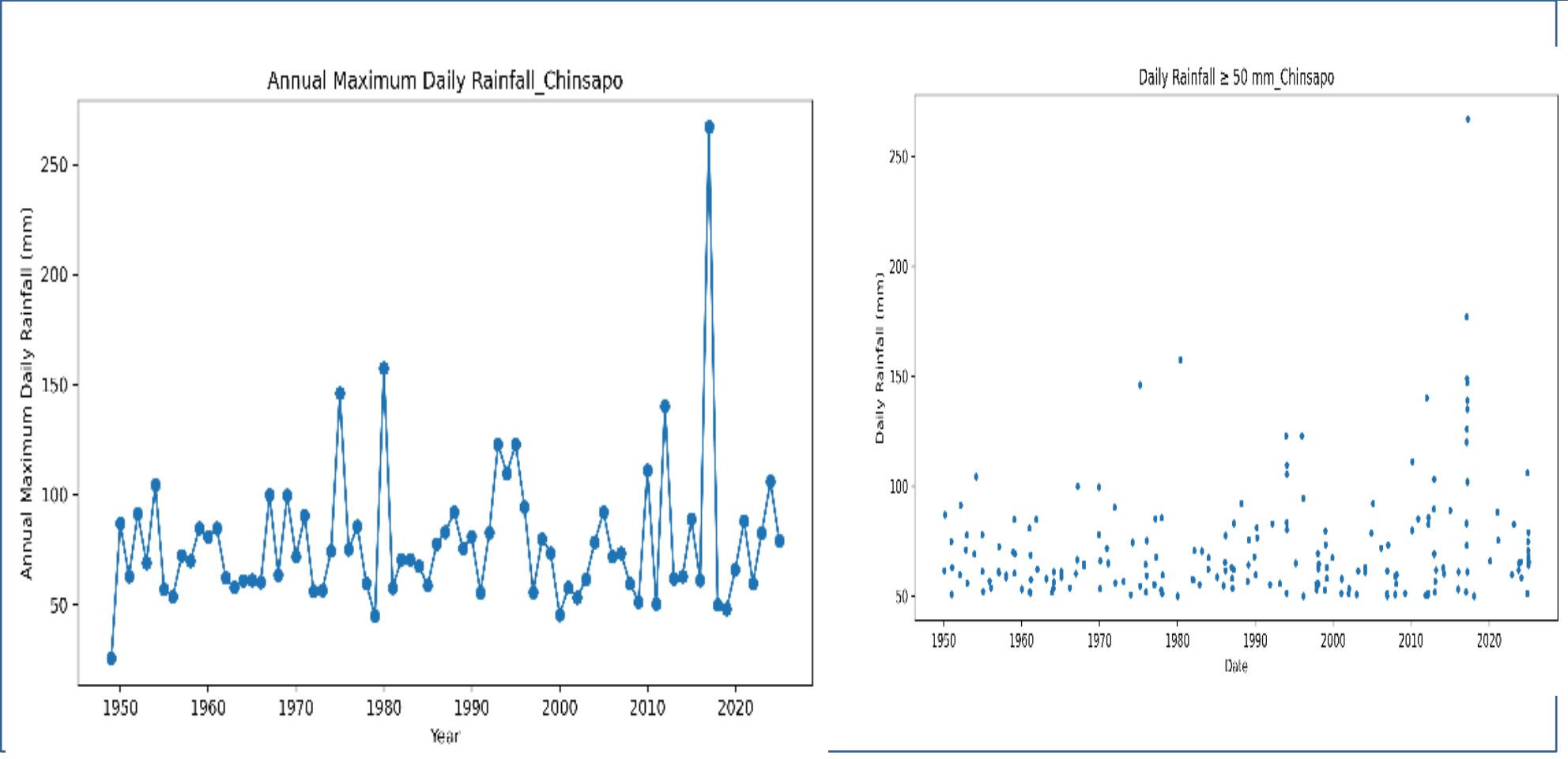
ROA 24 HR OBS (CEH PORTAL)



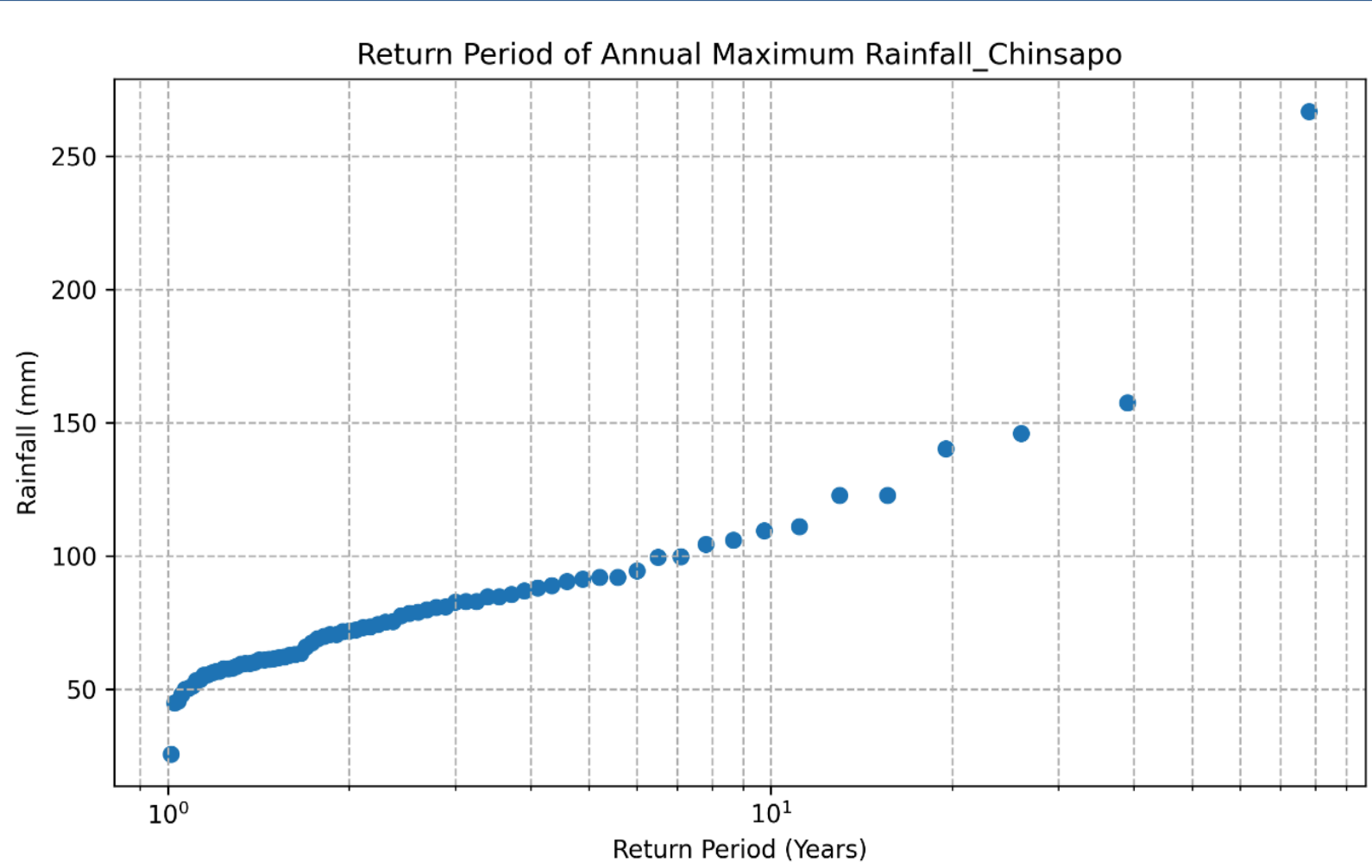
Satellite Images(Convection RGB)



24 HR DAILY MAX RAINFALL/POT



Return Period



Return Period/Exceedance Probability Table

Rank	Annual_Max_Rainfall_mm	Return_Period_Years	Exceedance_Probability
1	267	78	0.01
2	157.5	39	0.03
3	146.1	26	0.04
4	140.2	20	0.05
5	122.9	16	0.06
6	122.9	13	0.08
7	111.1	11	0.09
8	109.6	10	0.1
9	106	9	0.12
10	104.4	8	0.13
11	99.8	7	0.14
12	99.6	7	0.15
13	94.5	6	0.17
14	92.1	6	0.18
15	92.1	5	0.19
16	91.4	5	0.21
17	90.4	5	0.22
50	62.2	2	0.64
51	61.9	2	0.65
52	61.5	2	0.67
53	61.2	1	0.68

The 50 mm Rainfall received in the Area is not news. This has a return period of less than a year. There is almost 100% chance of daily rainfall exceeding 50 mm. The short-lived nature of the storm plus land use change due to urbanization may have increased severity of the flooding.

The forecast will be updated in December 2025

For further information contact: The Director of Climate Change and Meteorological Services, P.O. Box 1808, Blantyre.  
Tel +265 1 82 47 12 / Cell: +265 882 26 65 79 Email: [metdept@metmalawi.gov.mw](mailto:metdept@metmalawi.gov.mw) ; Website: [www.metmalawi.gov.mw](http://www.metmalawi.gov.mw)

Produced and printed with support from:

