



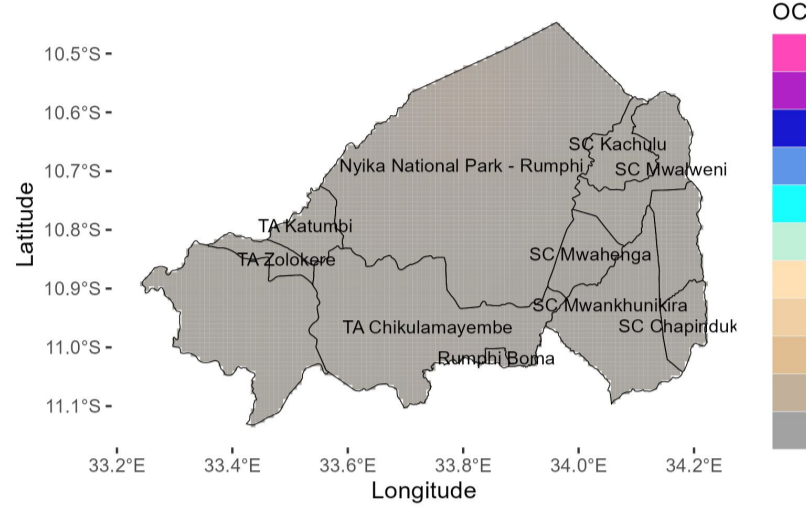
DZINJA LA 2025/2026 MWACHIDULE

Katenthedwe ka Nyanja ya mchere ya Pacific sikakhudza kwambiri nyengo ya dzinja ya 2025/26.

Madera ambiri m'bomali akuyembekezeka kulandira mvula ya mlingo okhazikika kapena kuchepera apo mu dzinja la 2025/2026.

October 2025

OCTOBER 2025 RAINFALL FORECAST

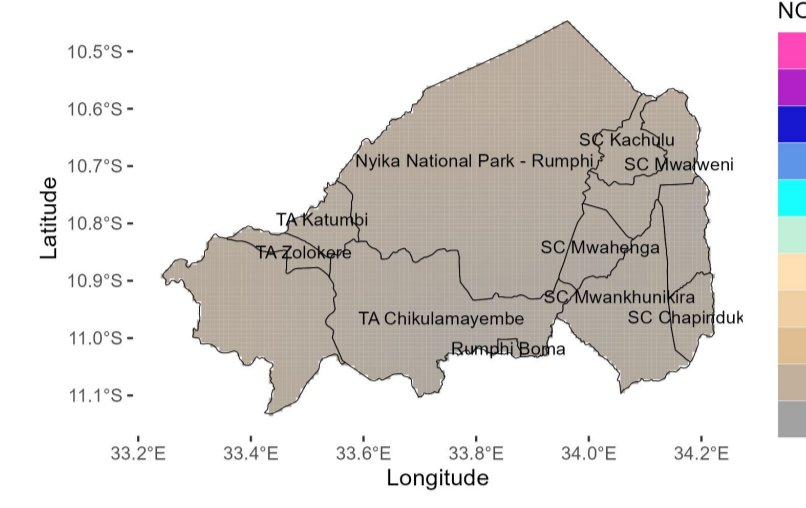


Mweziwu ukuyembekezeka kukhala ndi nyengo yotentha komanso yopanda mvula.

Komabe, madera ena a m'bomali akhoza kudzalandira mvula ya Chizimalupysa.

November 2025

NOVEMBER 2025 RAINFALL FORECAST

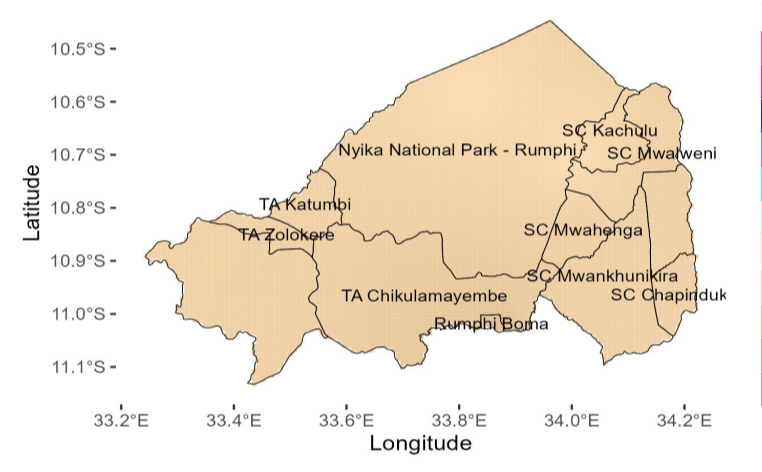


Nyengo yotentha, mphepo za mkuntho, ziphaliwali ndi mvula ya mabingu zikuyembekezeka m'madera ena ochepa.

Mvulayi ikhoza kuzakhala ya mlingo wa pafupifupi 50 mm.

December 2025

DECEMBER 2025 RAINFALL FORECAST

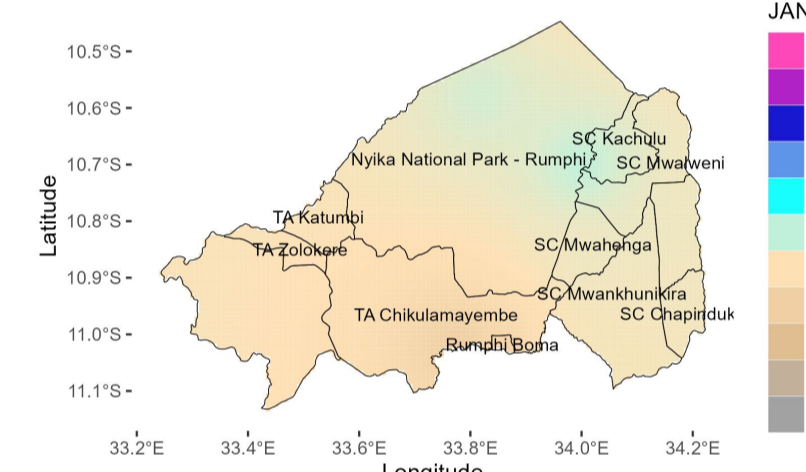


M'mwezi wa December, madera ambiri ayembekezere mvula ya mlingo wa pakati pa 150 mm ndi 200 mm.

Mvula yokhazikiza ikuyembekezeka kugwa kuyambira sabata lachiwiri m'mweziwu.

January 2026

JANUARY 2026 RAINFALL FORECAST



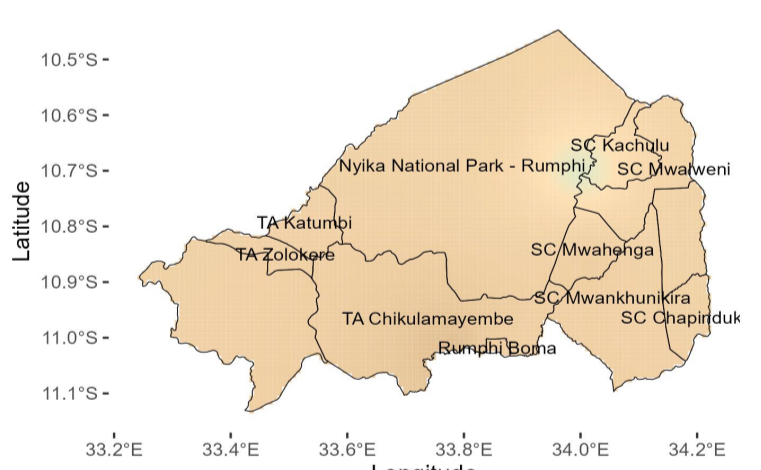
Madera ambiri akhodza kudzalandira mvula yoposera 200mm m'mwezi wa January.

Madera a SC Mwalweni, SC Kachulu ndi Nyika National Park ayembekezere mvula ya mlingo wa pakati pa 200 mm ndi 300 mm.

Ng'amba ya sabata imodzi ikuyembekezeka m'mwezi umenewu.

February 2026

FEBRUARY 2026 RAINFALL FORECAST



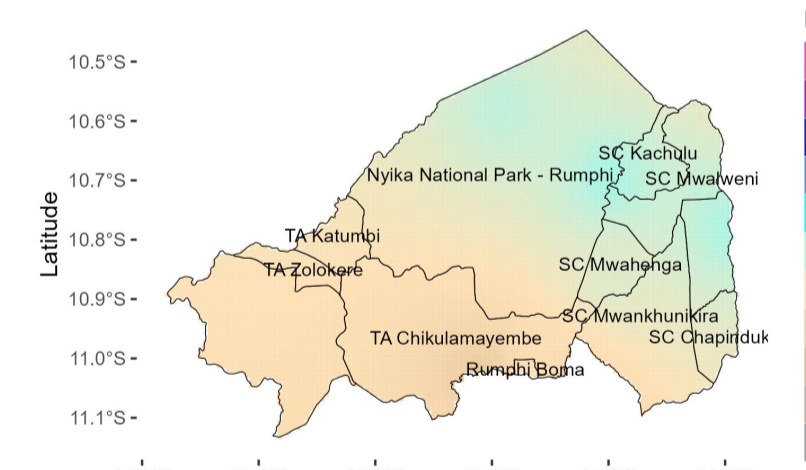
Nyengo ya mvula idzapitirira mu mwezi wa February. Madera ambiri akhodza kudzalandira mvula ya pakati pa 150 ndi 200mm.

Madera aku m'mawa a kwa SC Kachulu akuyembekezeka kulandira mvula yopyolera muyeso wa 200 mm.

Ng'amba ya sabata imodzi ikuyembekezeka m'mweziwu.

March 2026

MARCH 2026 RAINFALL FORECAST

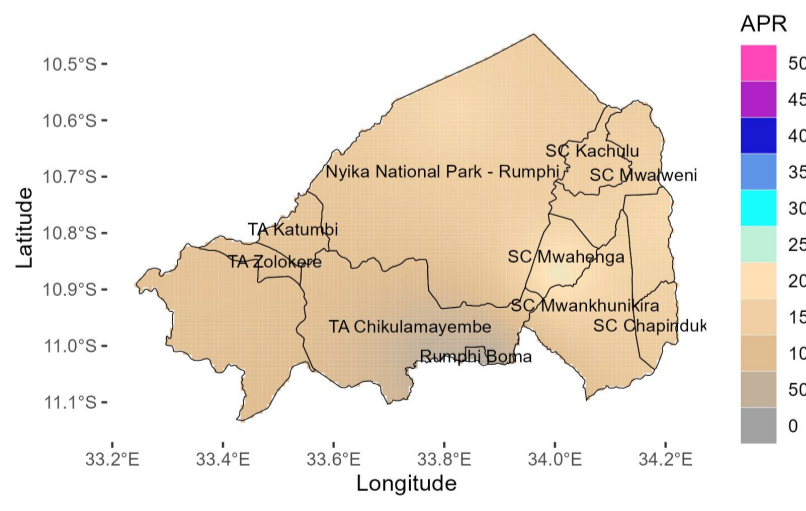


Madera akum'mwera cha kuzambwe kwa bomali akhodza kudzalandira mvula ya mlingo wa pakati pa 150-200 mm. Pamene madera aku mpoto ndi kumvuma ayembekezere mvula ya pakati pa 200-300 mm.

Ng'amba ya pafupifupi sabata ziwiri ikhodza kuzakhalapo m'mweziwu

April 2026

APRIL 2026 RAINFALL FORECAST

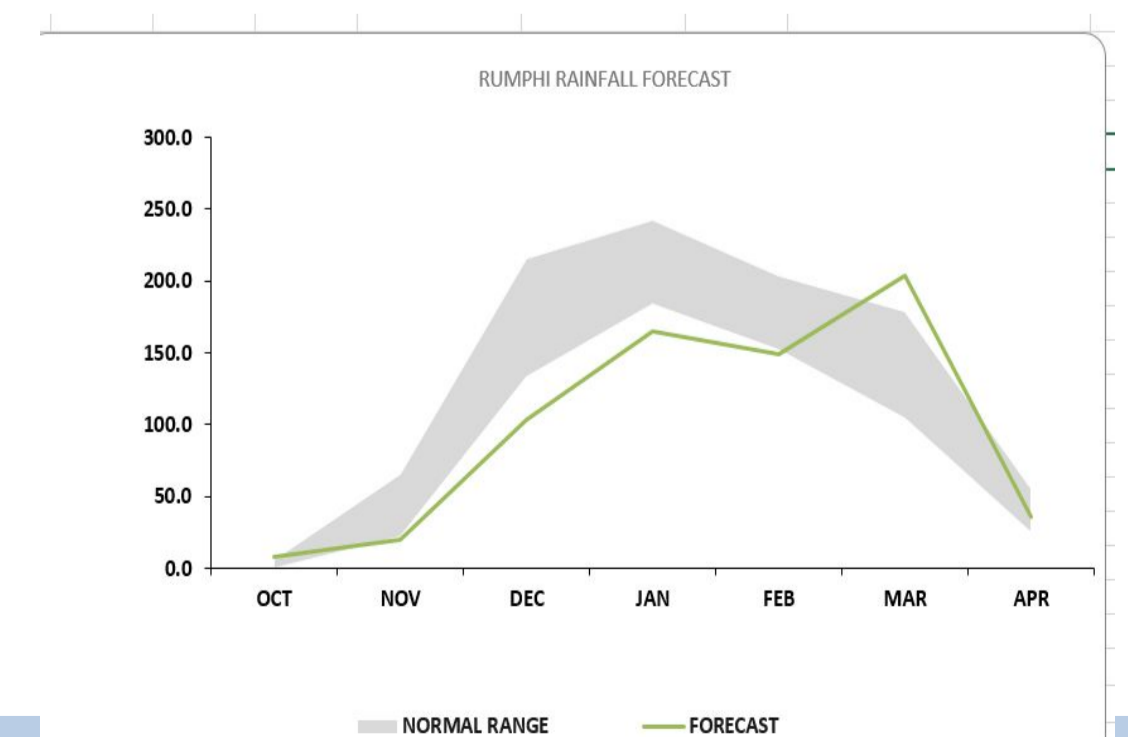


Madera ochuluka m'mbomali akhoza kudzalandira mvula ya mlingo wa pakati pa 50 mm ndi 100 mm.

Nyengo ya dzinja ikuyembekezeka kufika kumapeto sabata loyamba la April.

Mvula yokhazikika ikuyembekezeka kugwa kuyambila sabata lachiwiri la mwezi wa December 2025. Nyengo ya dzinja ikuyembekezeka kufika kumapeto sabata loyamba la mwezi wa April 2026 m'madera ambiri. Nyengo ya dzinja ikuyembekezeka kukhala yotalika ndi masiku 110 mpaka 120. Ng'amba ya sabata imodzi ikuyembekezeka mu January komanso mu February.

RUMPHI		
MONTH	NORMAL RANGE	FORECAST
OCT	0.0	6.1
NOV	22.4	65.5
DEC	132.8	215.4
JAN	183.8	242.7
FEB	152.6	203.6
MAR	104.6	179.0
APR	24.5	55.8



Ulosiwa udzaunikidwano mu mwezi wa December 2025

Zapangidwa ndi kusindikizidwa ndi thandizo lochokera ku:

For further information contact: The Director of Climate Change and Meteorological Services, P.O. Box 1808, Blantyre. Tel +265 1 82 47 12 / Cell: +265 882 26 65 79 Email: metdept@metmalawi.gov.mw; Website: www.metmalawi.gov.mw

