



UNDUNA WA ZACHILENGEDWE NDI KUSINTHA KWA NYENGO

NTHAMBI YOONA ZA NYENGO NDI KUSINTHA KWA NYENGO

ULOSI WA KAGWEDWE KA MVULA M'BOMA LA BLANTYRE, 2025-2026



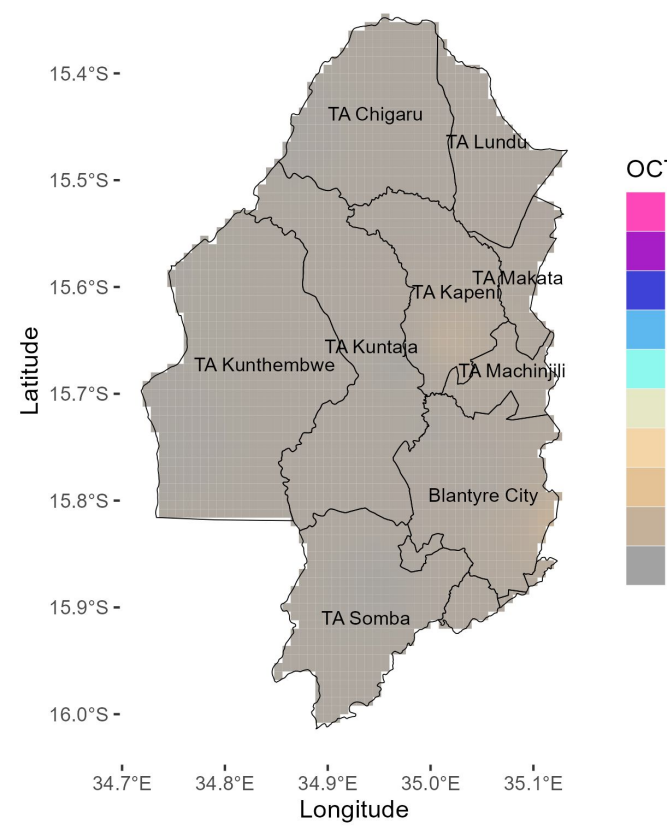
DZINJA LA 2025/2026 MWACHIDULE

Katenthedwe ka Nyanja ya mchere ya Pacific sikakhudza kwambiri nyengo ya dzinja ya 2025/26.

Boma la Blantyre likuyembekezeka kulandira mvula ya mlingo okhazakika kapena kupyolera apo kuchoka mwezi wa October mpaka April 2026. palinso kuthekera kwa mlingo okhazikika komonso kuchepera mu miyezi ya November ndi February.

October 2025

OCTOBER 2024 RAINFALL FORECAST

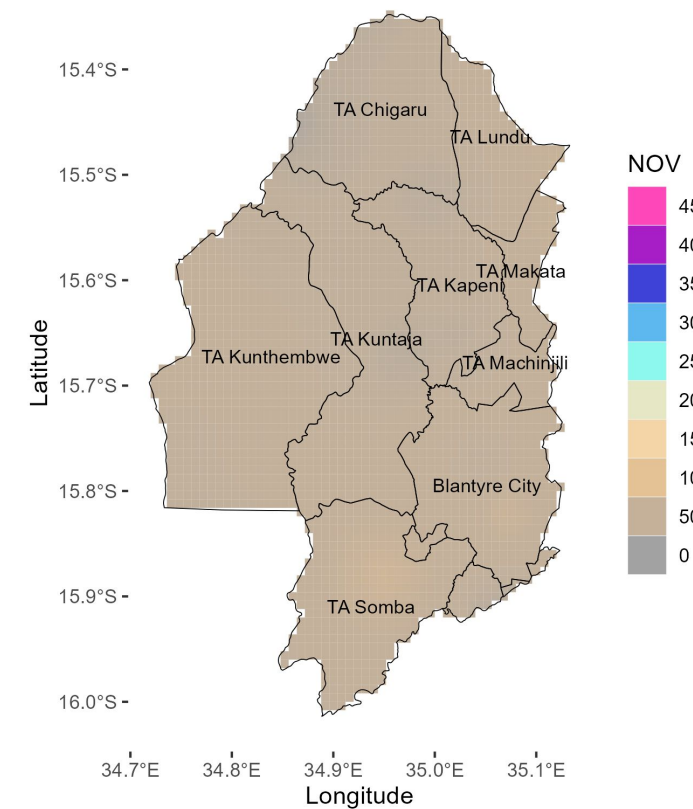


Nyengo yotentha, komonso mvula ya Chizimalupsa zikuyembekezeka mu mwezi wa October.

Mvulayi ikhoza kukhala ya ziphaliwali ndi mphepo ya nkuntho.

November 2025

NOVEMBER 2024 RAINFALL FORECAST



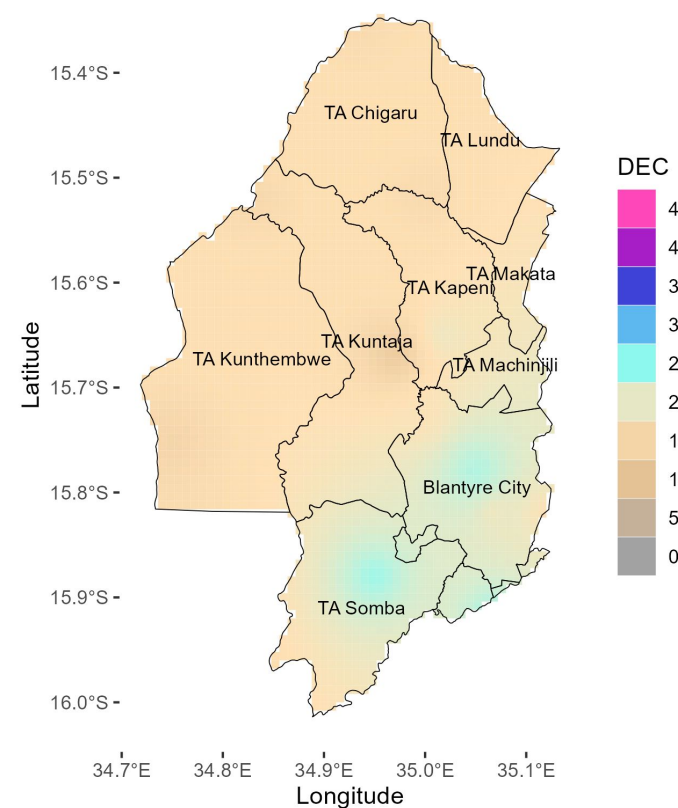
Mvula ya mlingo okhazikika kapena yochepera apo ikuyembekezeka m'mwezi wa November.

Mvula yokhazikika ikuyembekezeka kugwa kuyambira sabata lachitatu la mwezi wa November.

Mvulayi ikhoza kukhala ya ziphaliwali komonso yamphepo yamkuntho

December 2025

DECEMBER 2024 RAINFALL FORECAST

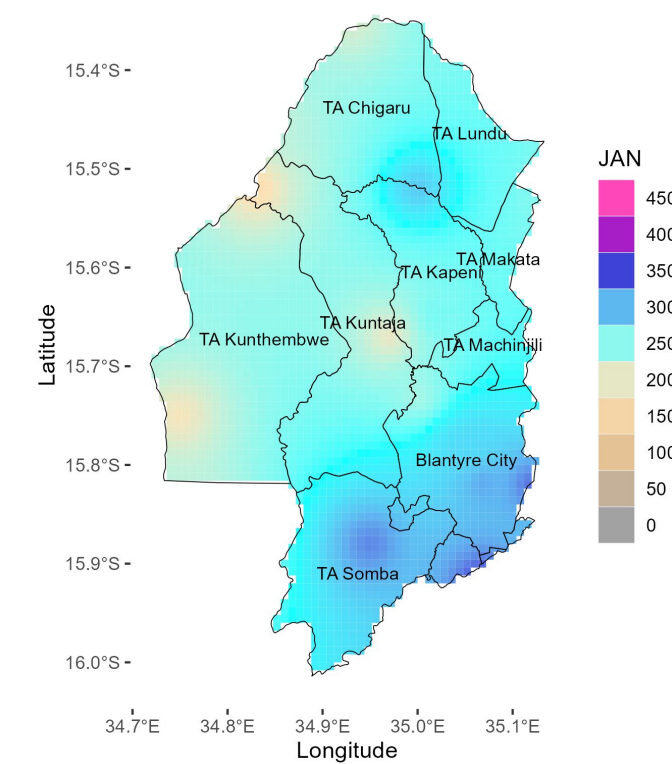


Mvula ya mlingo wa pakati pa 100 ndi 200 mm ikuyembekezeka mmadera a TA Kuntaja, TA Kapeni, TA Kunthembe, TA Chigalu, and TA Lundu. Pamene mtauni ya Blantyre ikhoza kuzalandira mvula yamlingo wa 250 mm.

Mvulayi ndi ya mlingo yokhazikika kapena yopyolera apo mu mzindawu.

January 2026

JANUARY 2025 RAINFALL FORECAST

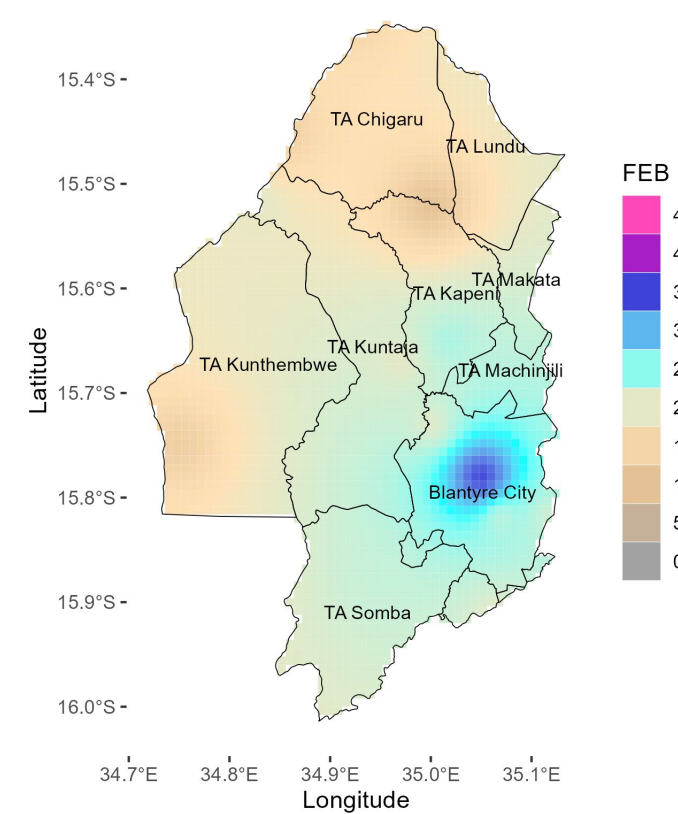


Mvula ya mlingo wa pakati pa 250 mpaka 300 mm ikuyembekezeka m'madera ochulukirapo mu Blantyre. Komabe, madera monga TA Kuntaja komonso TA Kapeni ayembekezere mvula ya pakati pa 100 ndi 200 mm yomwe ndi yokhazikika kapena yocheperako.

Chiopsezo cha ng'amba ya sabata limodzi chilipo m'mweziwu.

February 2026

FEBRUARY 2025 RAINFALL FORECAST

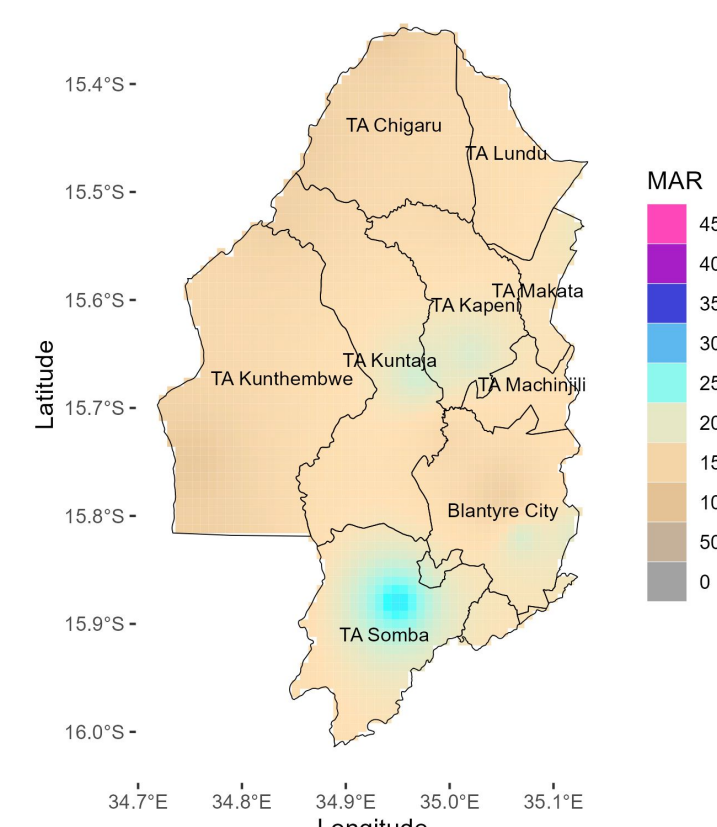


Mvula ya mlingo wokhazikika kapena wocheperako, yokwanira pakati pa 150 ndi 200 mm, ikuyembekezeka kuzagwa m'mwezi wa February.

Pali chiopsezo cha ng'amba ya pafupifupi sabata limodzi.

March 2026

MARCH 2025 RAINFALL FORECAST

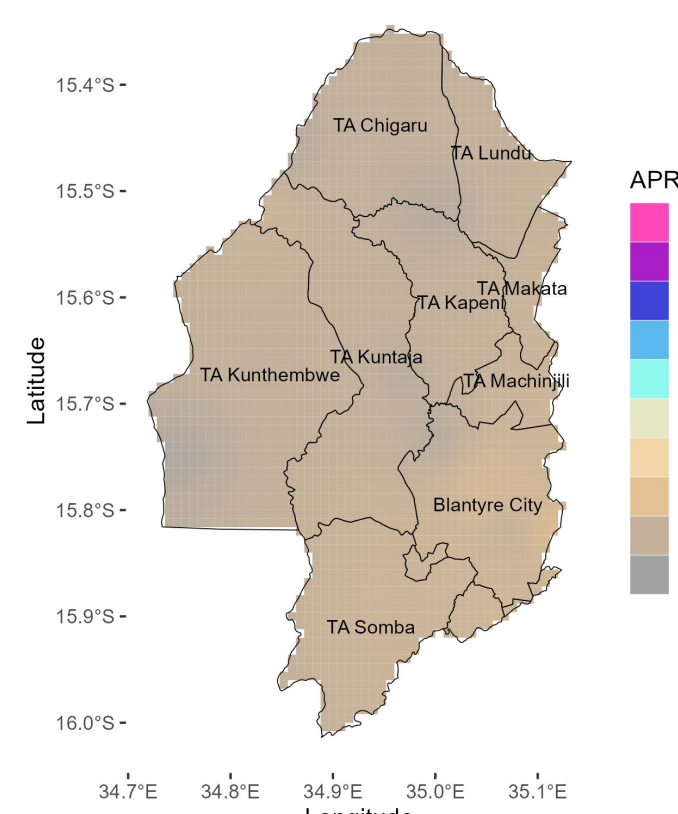


Madera ambiri mu Blantyre ayembekezere mvula ya mlingo wa pakati pa 100 mm ndi 150 mm mu mweziwu.

Mlingo umenewu ndi wokhazikika kapena wopyolera.

April 2026

APRIL 2025 RAINFALL FORECAST



Mvula ikuyembekezereka kuzagwa ya mlingo wa pakati pa 50 ndi 100 mm.

Nyengo yadzinja ikuyembekezereka kupita kumapeto kuyambira sabata lachitatu lamwezi wa April.

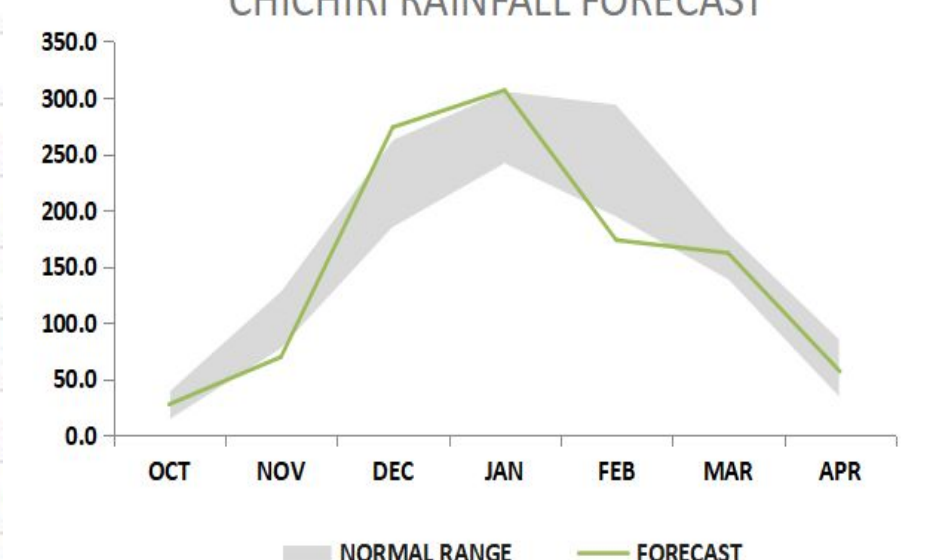
Mvula yokhazikika ikhodza kuzayamba pakati pa mwenzu wa November 2025.

Mathero amvula akuyembekezeka kuyambira mkati mwa April 2026, kusalika kwa dzinjali ndi kwa masiku 130 kufikira 140.

Ndondomeko va kagwedwe ka mvula ili musimu

CHICHIRI		
MONTH	NORMAL RANGE	FORECAST
OCT	12.9 - 39.7	27.4
NOV	76.0 - 128.8	69.5
DEC	184.0 - 263.4	273.7
JAN	240.6 - 306.6	306.6
FEB	193.1 - 294.6	173.4
MAR	137.5 - 181.3	161.9
APR	32.3 - 85.6	56.7

CHICHIRI RAINFALL FORECAST



Ulosiwa udzasindikizidwanso mu mwezi wa December 2025

Mukafuna kudziwa zambiri lemburani kwa: The Director of Climate Change and Meteorological Services, P.O. Box 1808, Blantyre. Tel +265 1 82 47 12 / Cell: +265 882 26 65 79 Email: metdept@metmalawi.gov.mw; Website: www.metmalawi.gov.mw

Zasindikizidwa ndi thandizo lochokera ku:

