



# UNDUNA WA ZA CHILENGEDWE NDI KUSINTHA KWA NYENGO



## NTHAMBI YOONA ZA CHILENGEDWE NDI KUSINTHA KWA NYENGO

### ULOSI WA KAGWEDWE KA MVULA M'DZINJA, M'DZINJA LA 2025-2026 M'BOMA LA MZIMBA

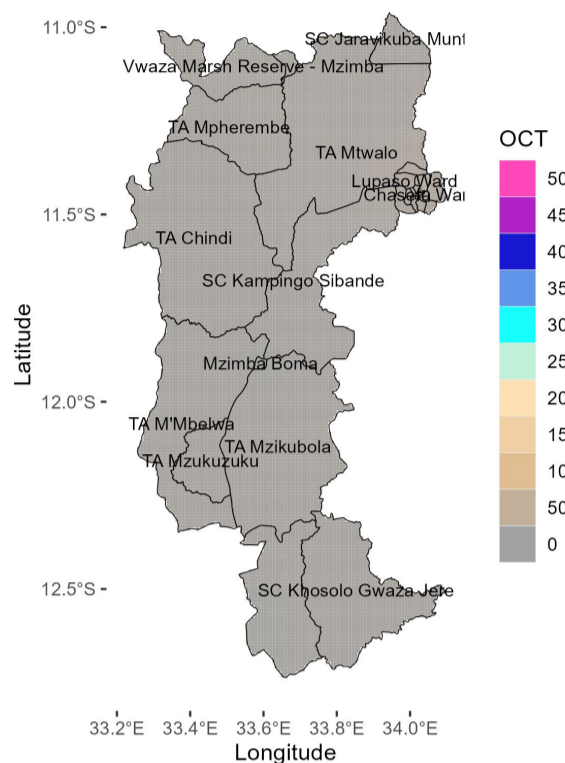
#### Dzinja la 2025-2026 Mwachidule

Nyengo ya dzinja ya 2025/2026 ikuyembekezereka kukhala ya pakatikati, osati yokhudzidwa ndi La Nina kapena El Nino

Boma la Mzimba likuyembekezereka kulandira mvula ya mlingo wokhazikika kapena mlingo woposera wokhazikika mu nyengo ya mvula ya 2025/2026

### October 2025

OCTOBER 2025 RAINFALL FORECAST

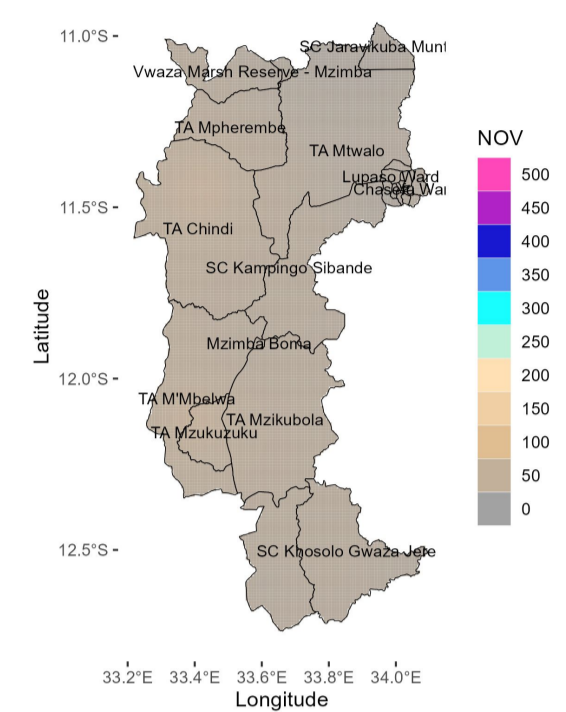


Mwenzi wa October ukuyembekezereka wopanda mvula.

Komabe mvula ya chizimalupsya ikuyembekezereka mu mader a ochepa.

### November 2025

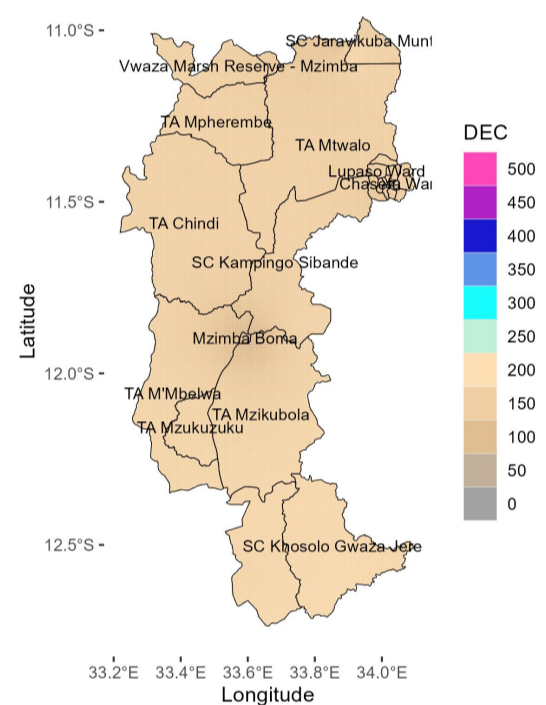
NOVEMBER 2025 RAINFALL FORECAST



Yembekezereka mvula ya mulingo wokhazikika ya mulingo wapakati pa 50 mm kufikira 100 mm mu mwenziwu.

### December 2025

DECEMBER 2025 RAINFALL FORECAST

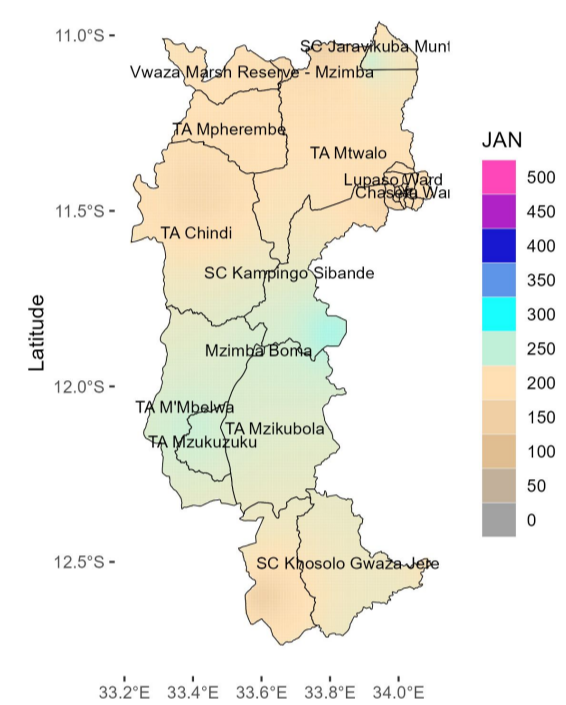


Mvula ya mulingo wokhazikika kapena kuposera ikuyembekezereka, ndipo mader a ambiri akuyembekezereka kulandira mvula ya mulingo wapakati pa 150 mm kufikira 250 mm.

Mvula yodzalira ikuyembekezereka kugwa kuyambira pakati pa mwenzi wa December.

### January 2026

JANUARY 2026 RAINFALL FORECAST



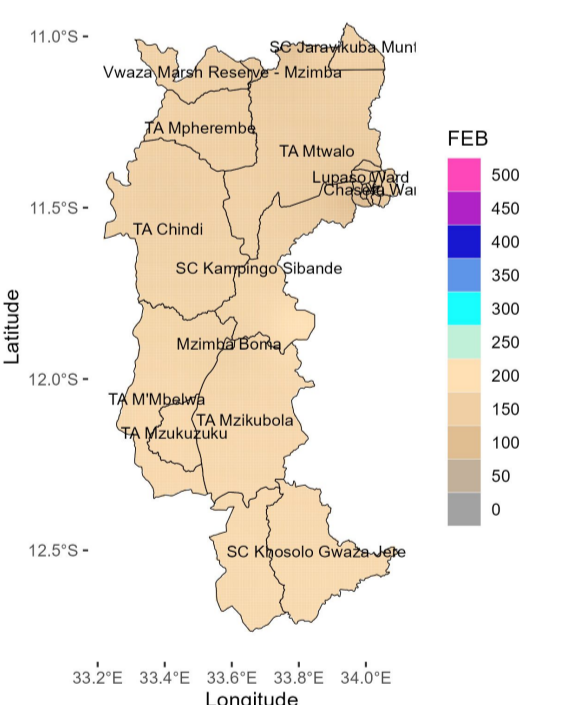
Mvula ya mulingo wokhazikika kapena kuposera, ya mulingo opyola 200 mm, ikuyembekezereka mu mader a ambiri.

Mader a opezeka kwa T/A Mzikuwola, Sc Kampingo Siwande, Mzimba boma, T/A Pherembe, T/A Mzukuzuku, T/A Mbelwa ndi Sc Jaravikuwa akuyembekezereka kudzalindira mvula ya pakati pa 250 kufikira 300 mm.

Pali chiopyezo cha ng'amba ya sabata imodzi m'mwenziwu.

### February 2026

FEBRUARY 2026 RAINFALL FORECAST

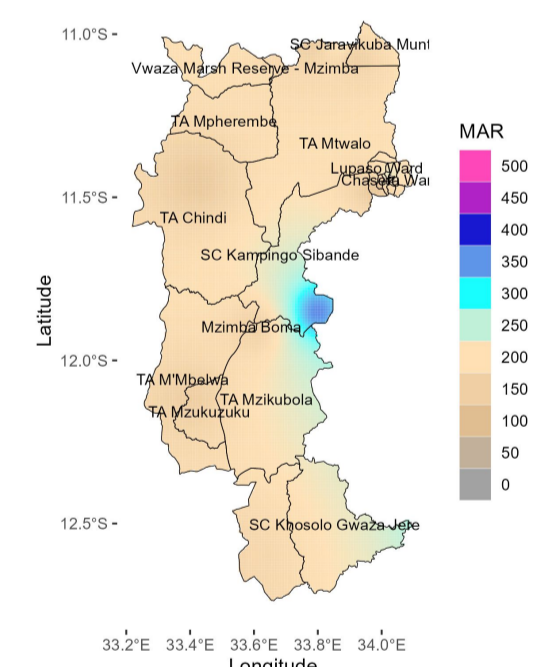


Mvula ya mulingo wokhazikika ikuyembekezereka mu mwenziwu. Mader a ambiri akuyembekezereka kulandira mvula ya mulingo wa pafupifupi 200 mm.

Pali chiopyezo cha ng'amba ya sabata imodzi m'mwenziwu

### March 2026

MARCH 2026 RAINFALL FORECAST

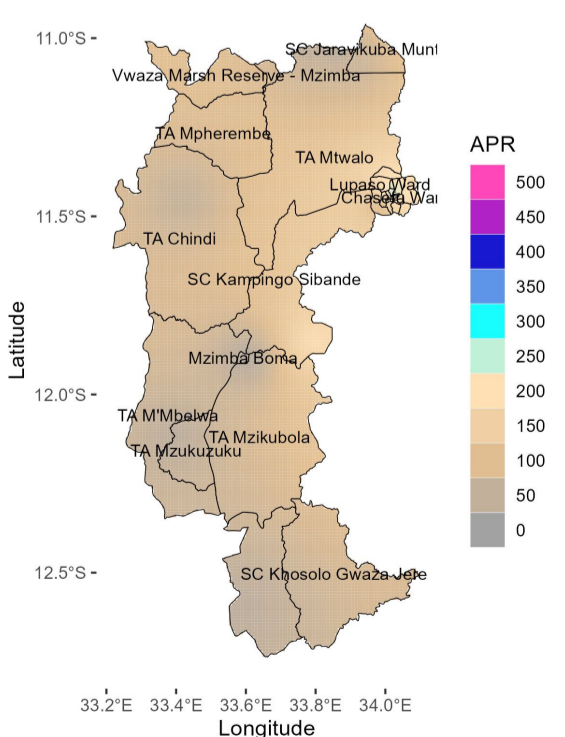


Mader a ambiri adzapitilira kulandira mvula yopitilira 200 mm, ndipo Mzimba boma akuyembekezereka kulandira mvula ya mulingo wapakati pa 300 mm kufikira 350 mm

Ng'amba yofikira masabata awiri ikuyembekezerekanso mu mwenziwu.

### April 2026

APRIL 2026 RAINFALL FORECAST



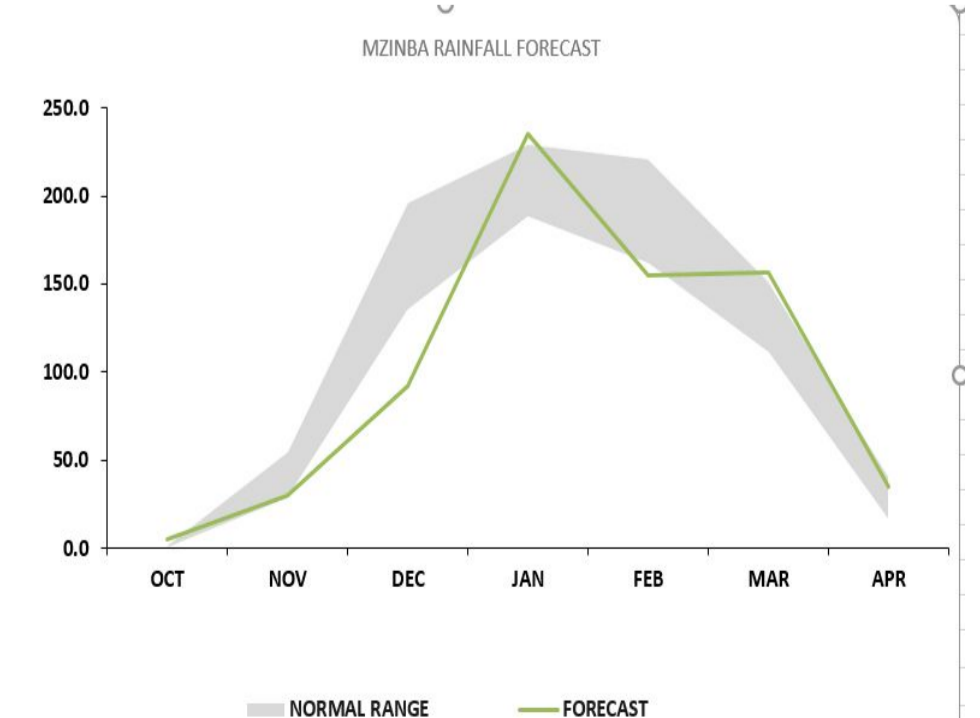
Mvula ya mulingo wa pakati pa 50 mm kufikira 100 mm ikuyembekezereka. Iyi ndi mvula ya mulingo wokhazikika kapena kuposera mu mwenziwu.

Mvula ikuyembekezereka kufika kumapeto sabata yomaliza ya mwenzi wa April mu mader a mbiri.

Mvula yodzalira ikuyembekezereka kuyamba kuyambira pakati pa mwenzi wa December 2025, ndipo nyengo yadzinjali ikuyembekezereka kufika ku mapeto sabata yomaliza ya April 2026. Nyengo yamvulayi ikuyembekezerekanso kukhala ya masiku a pakati pa 130 kufikira 140, ndipo pali chiopyezo cha ng'amba ya sabata imodzi mu mwenzi wa January and February.

The table and figure below show monthly rainfall distribution for the season with a normal band in grey.

MZIMBA		
MONTH	NORMAL RANGE	FORECAST
OCT	0.0 2.0	5.1
NOV	28.1 54.5	29.7
DEC	135.4 196.1	91.8
JAN	188.4 229.2	235.2
FEB	161.3 221.2	154.8
MAR	111.3 151.8	156.3
APR	16.0 40.9	34.9



The forecast will be updated in December 2025

For further information contact: The Director of Climate Change and Meteorological Services, P.O. Box 1808, Blantyre.

Tel +265 1 82 47 12 / Cell: +265 882 26 65 79 Email: metdept@metmalawi.gov.mw; Website: www.metmalawi.gov.mw

Produced and printed with support from:

