



Overview of 2025/2026 Rainfall Season

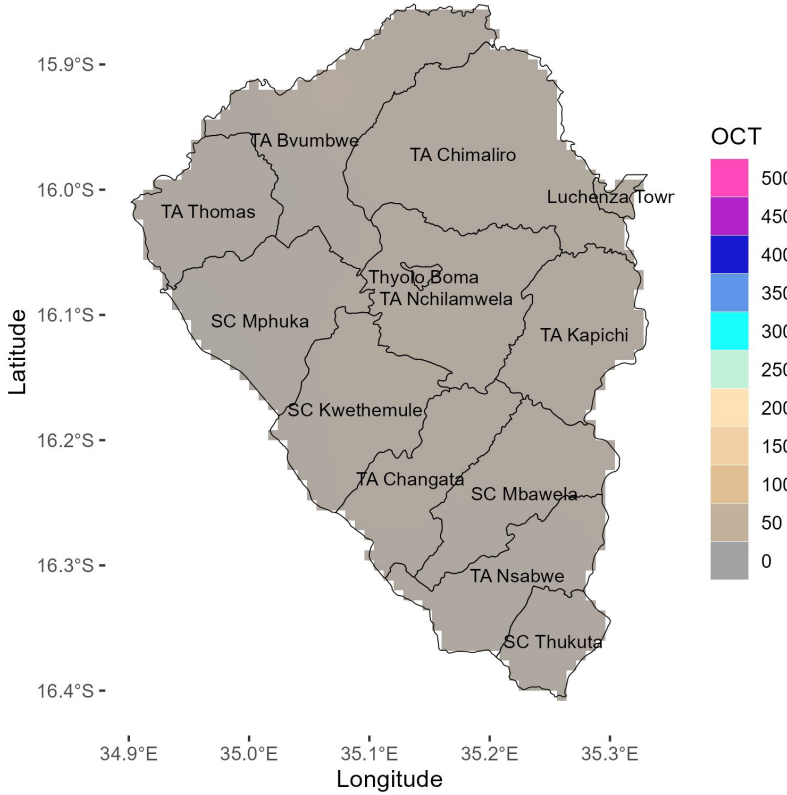
The 2025/2026 rainfall season is likely to be partly influenced by Neutral El Nino Southern Oscillation conditions in the tropical Pacific Ocean among other factors.

Thyolo District is expected to receive **generally normal rainfall amounts** during the 2025/2026 rainfall season

October 2025

November 2025

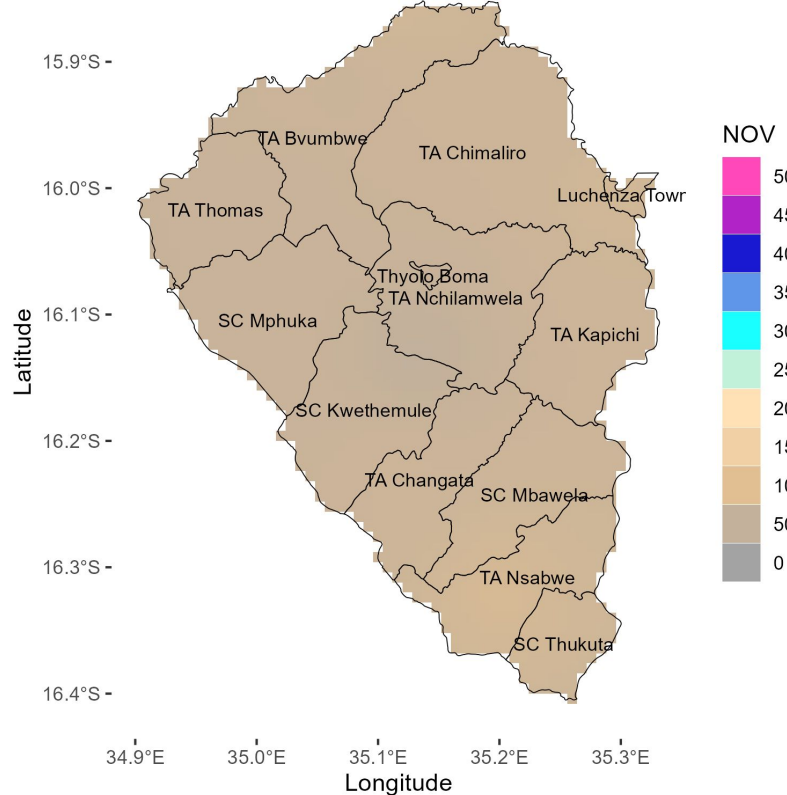
OCTOBER 2025 RAINFALL FORECAST



October is expected to be generally dry and hot. However, Chizimalupsya rains may be experienced in some parts of the district.

Expect gusty winds during this month.

NOVEMBER 2025 RAINFALL FORECAST



Generally below normal rainfall amounts are expected during this month with totals between 50mm to 100mm in most areas.

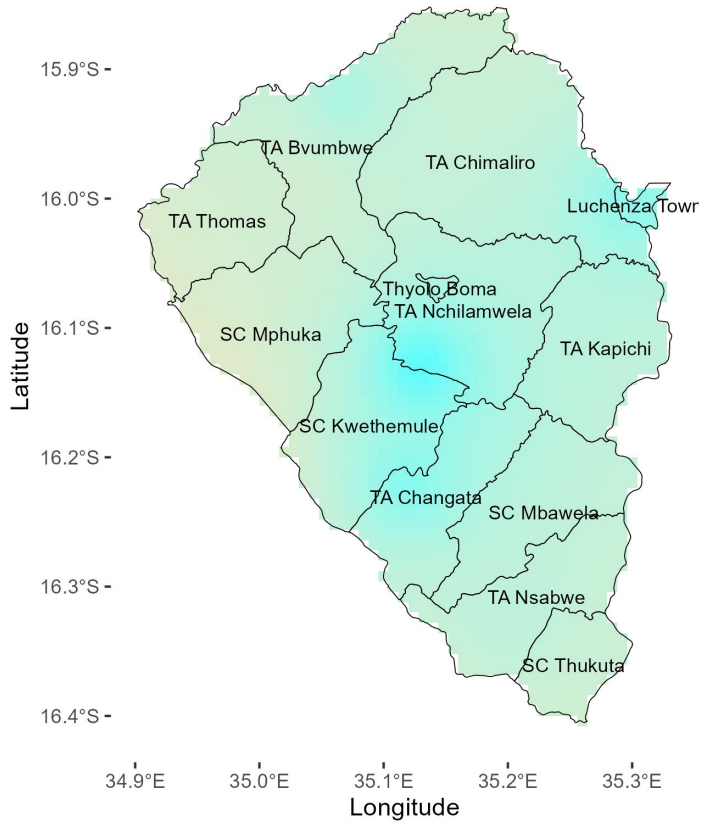
Gusty winds and lightning associated with thunderstorms are also anticipated

The onset rains are expected during the last week of November.

December 2025

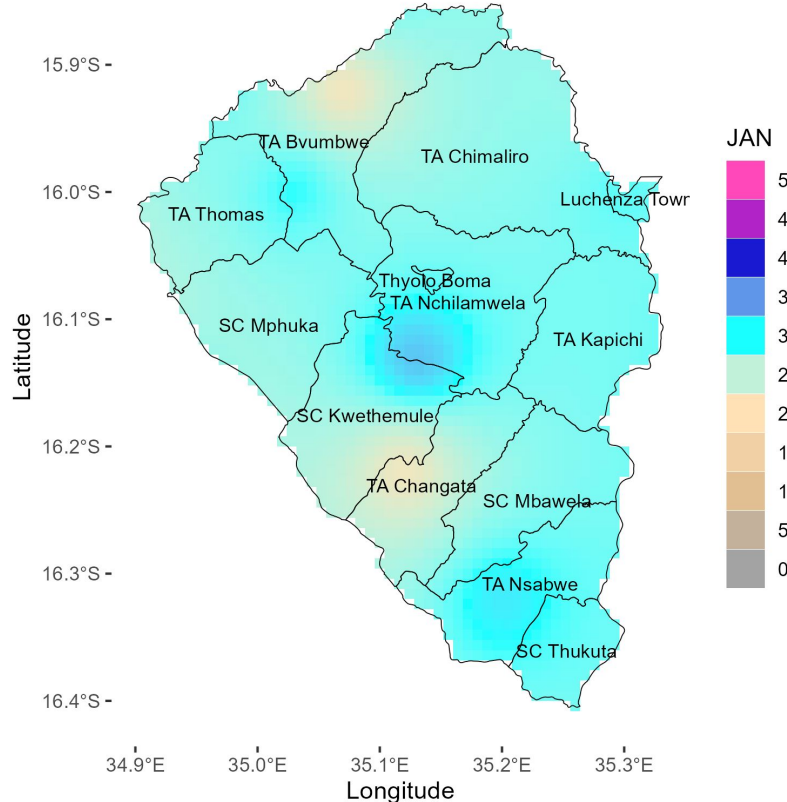
January 2026

DECEMBER 2025 RAINFALL FORECAST



Most areas are expected to receive normal to above normal rainfall amounts ranging between 200mm to 250mm during this month. Isolated areas over TA Nchilamwela, SC Kwethemule and TA Changata will receive more rainfall of about 300mm.

JANUARY 2026 RAINFALL FORECAST

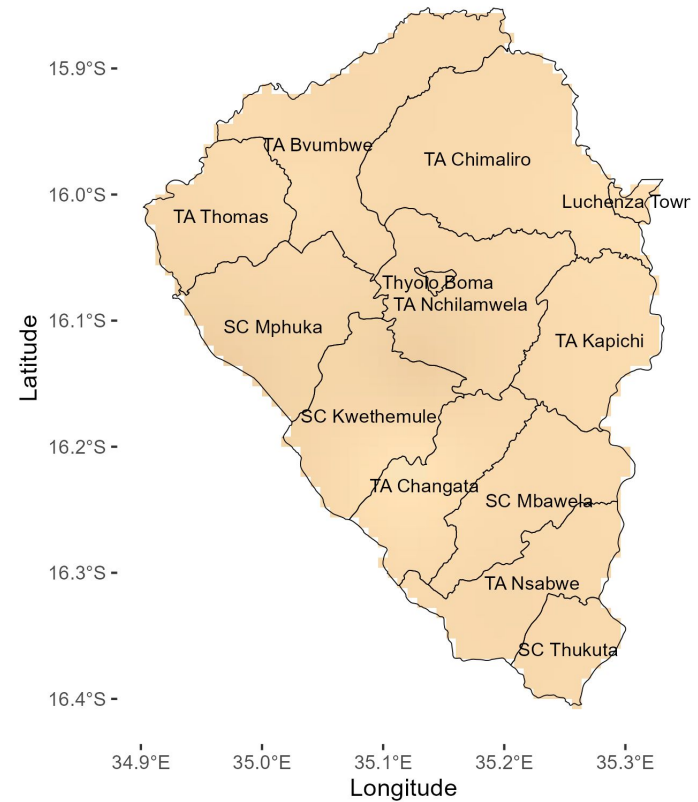


In January, normal rainfall amounts are expected over most areas with below normal rainfall over few areas. Rainfall amounts are expected to range from 150 mm to 200 mm in most areas. Dry spells of less than a week are more likely during this month.

February 2026

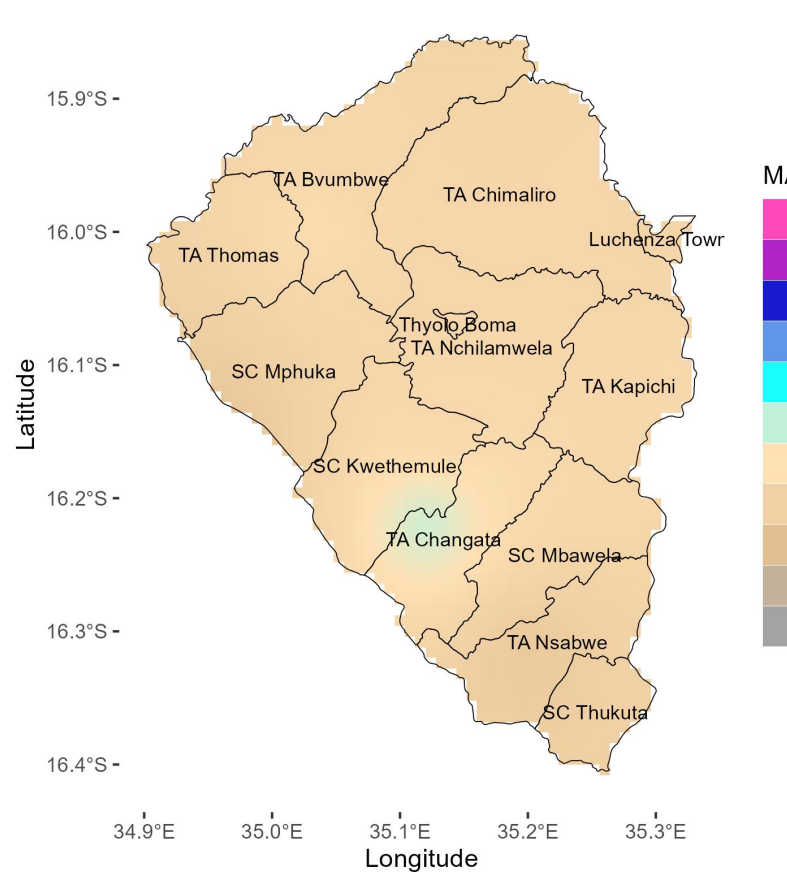
March 2026

FEBRUARY 2026 RAINFALL FORECAST



In February, normal rainfall amounts are expected over most areas with below normal rainfall over few areas. Rainfall amounts are expected to range from 150 mm to 200 mm in most areas. Dry spells of less than a week are more likely during this month.

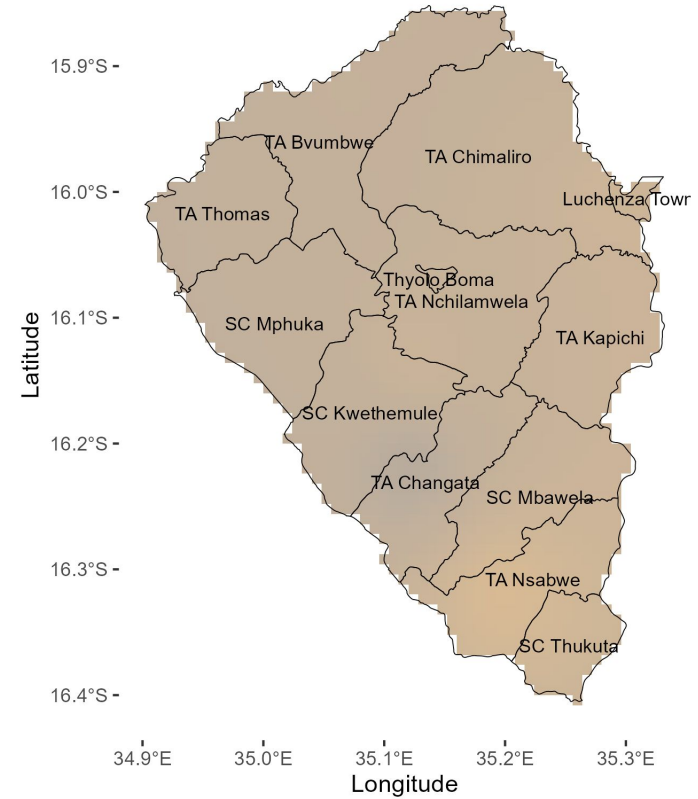
MARCH 2026 RAINFALL FORECAST



Generally normal rainfall amounts of about 150mm are expected over most areas during this month. While some areas are expected to receive over 200mm of rainfall such as SC Kwethemule and TA Changata.

April 2026

APRIL 2026 RAINFALL FORECAST

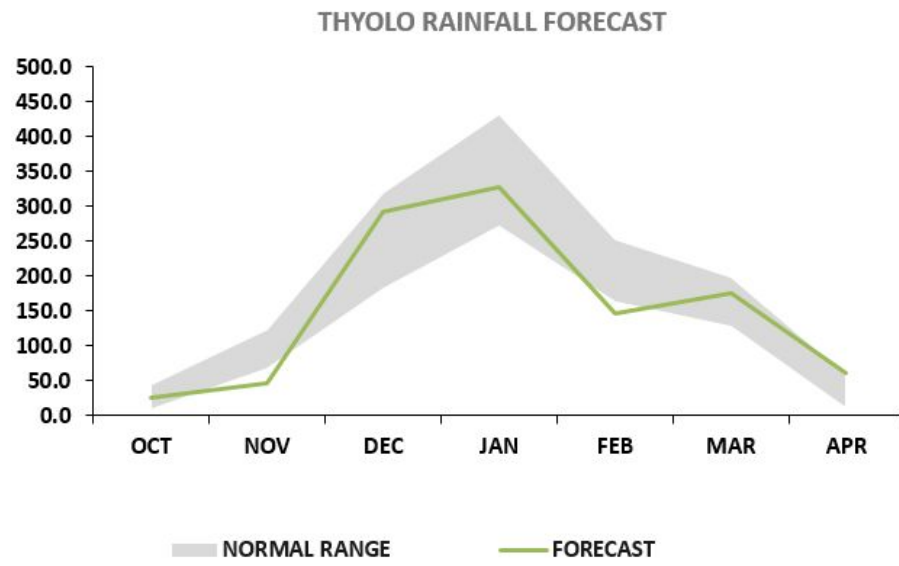


In April, most areas will generally receive normal to below normal rainfall amounts ranging between 100mm to 150mm. The rainfall season is expected to come to an end during mid-week of April.

- **Rainfall Onset** is expected from last week of November 2025..
- Rainfall **cessation** is expected mid-April 2026..
- **Season length** is expected to range from **130 to 140 days**.
- The risk of dry spells of about a week during the month of January and February is likely.

The table and figure below show monthly rainfall distribution at Thyolo with a normal band in grey.

THYOLO			
MONTH	NORMAL RANGE		FORECAST
OCT	9.8	44.6	25.5
NOV	66.6	123.2	47.4
DEC	182.7	319.5	293.1
JAN	270.9	432.1	327.0
FEB	163.6	252.1	145.8
MAR	127.6	199.3	174.9
APR	10.8	59.2	60.9



The forecast will be updated in December 2025

For further information contact: The Director of Climate Change and Meteorological Services, P.O. Box 1808,Blantyre.
Tel +265 1 82 47 12 / Cell: +265 882 26 65 79 Email: metdept@metmalawi.gov.mw; Website: www.metmalawi.gov.mw

Produced and printed with support from:

