



MINISTRY OF NATURAL RESOURCES AND CLIMATE CHANGE

DEPARTMENT OF CLIMATE CHANGE AND METEOROLOGICAL SERVICES

RUMPHI DISTRICT DOWNSCALED SEASONAL FORECAST, 2025/2026

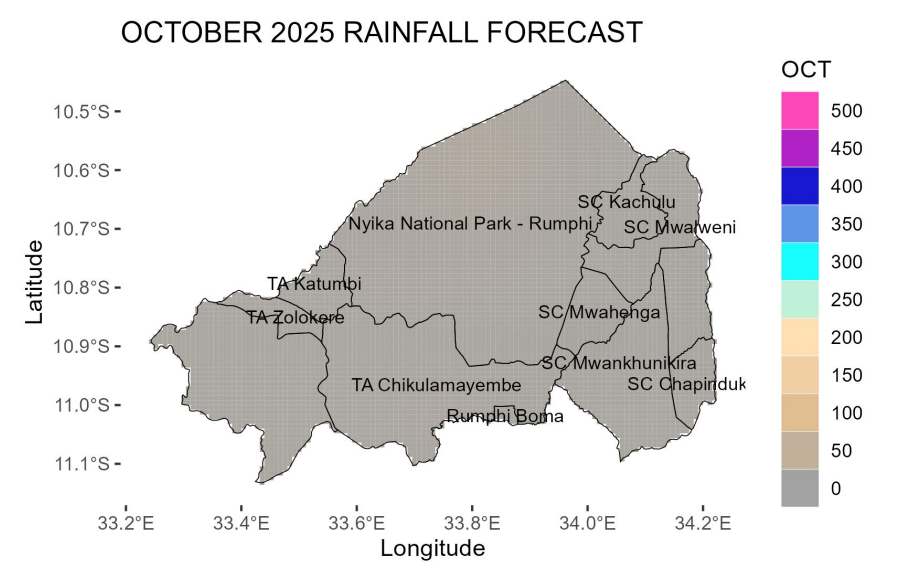


OVERVIEW OF 2025/2026 RAINFALL SEASON

The 2025/2026 rainfall season is likely to be partly influenced by Neutral El Nino Southern Oscillation conditions in the tropical Pacific Ocean among other factors.

Most areas in Rumph District are likely to receive **normal to below normal rainfall** amounts **during the 2025/2026 season**.

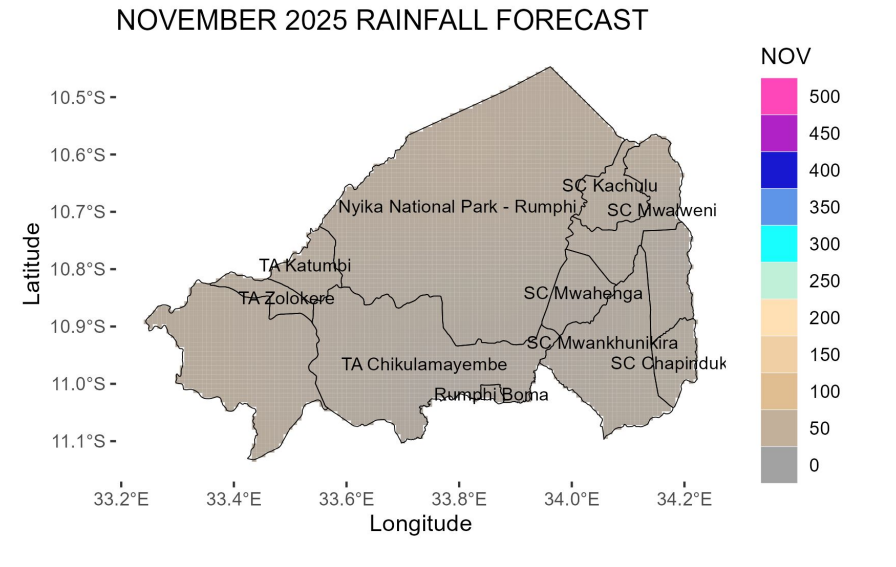
October 2025



October is expected to be a hot and dry month in Rumph.

However, the district is expected to receive *Chizimalupsya* rains in some areas of the district.

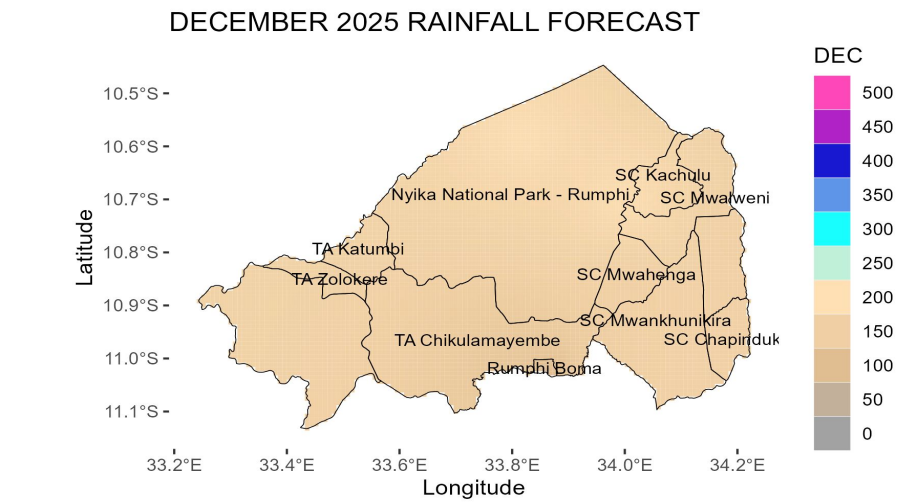
November 2025



Hot weather conditions, gusty winds and lightning associated with thunderstorms should be expected in this month.

Few areas in the district are expected to receive rainfall amounts of about 50 mm.

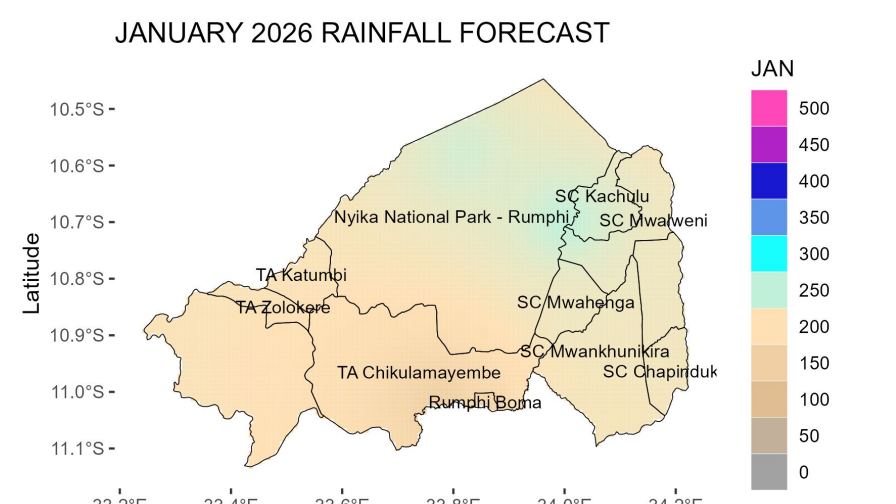
December 2025



December is likely to be wet, with most areas expected to receive rainfall amounts between 150-200 mm during this month.

Rainfall onset is expected from second week of this month.

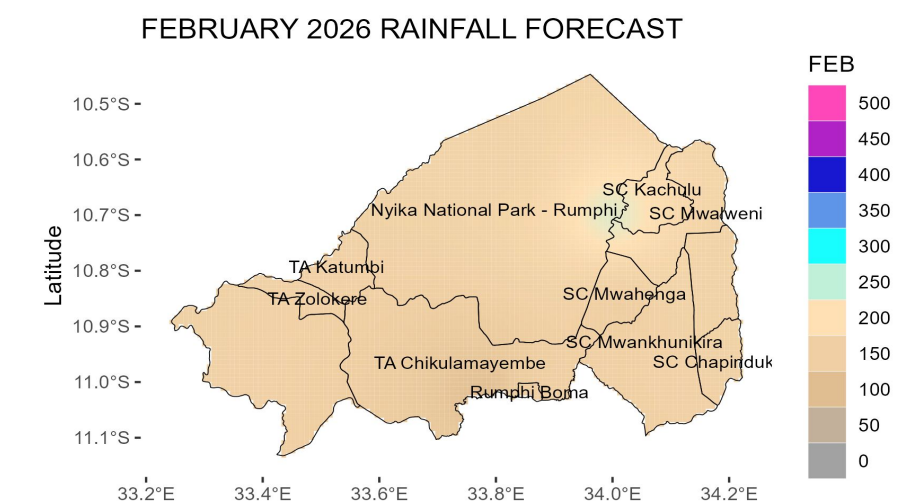
January 2026



In January, rainfall amounts of at least 200mm are expected in most areas of the district. Areas in SC Kachulu, SC Mwalweni and Nyika National Park are expected to receive rainfall amounts between 200 mm and 300 mm.

A Dry spell of about 1 week or so is also expected during the month

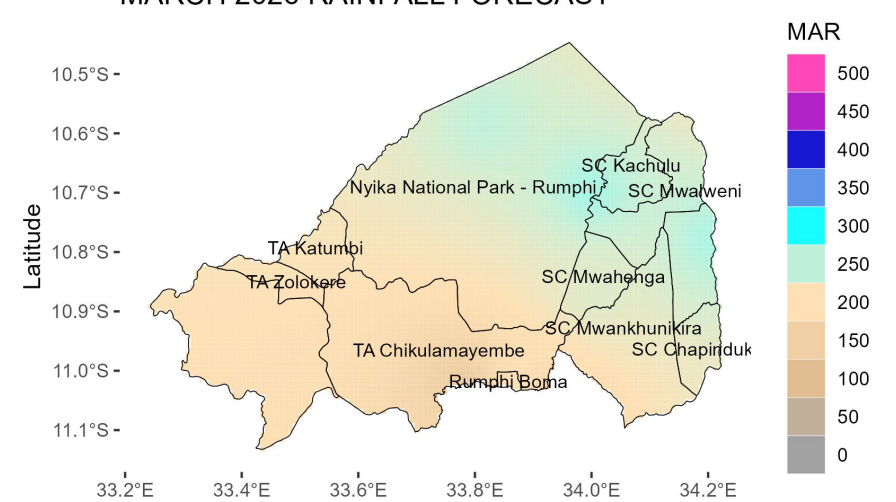
February 2026



The rainfall in the month of February is likely to be below average. Most areas are expected to receive normal rainfall, between 150 mm and 200 mm. Areas East of SC Kachulu are expected to receive more than 200 mm of rainfall amounts.

A Dry spell of about week is also expected during the month.

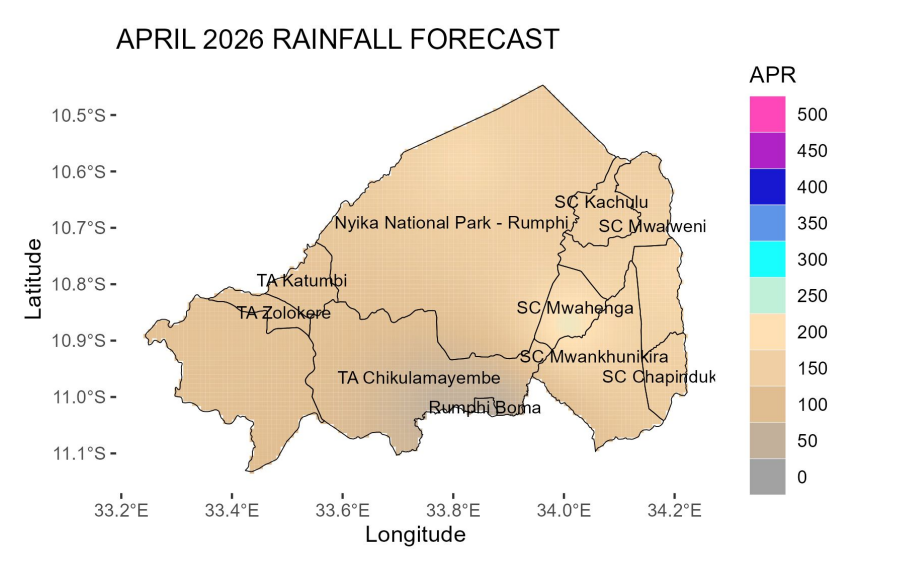
March 2026



Normal rainfall situation is likely in March. The south western parts of the district are expected to receive rainfall amounts of between 150-200 mm the northern and eastern parts are expected to receive 200-300 mm of rainfall.

The dry spell of about two weeks expected during the month.

April 2026



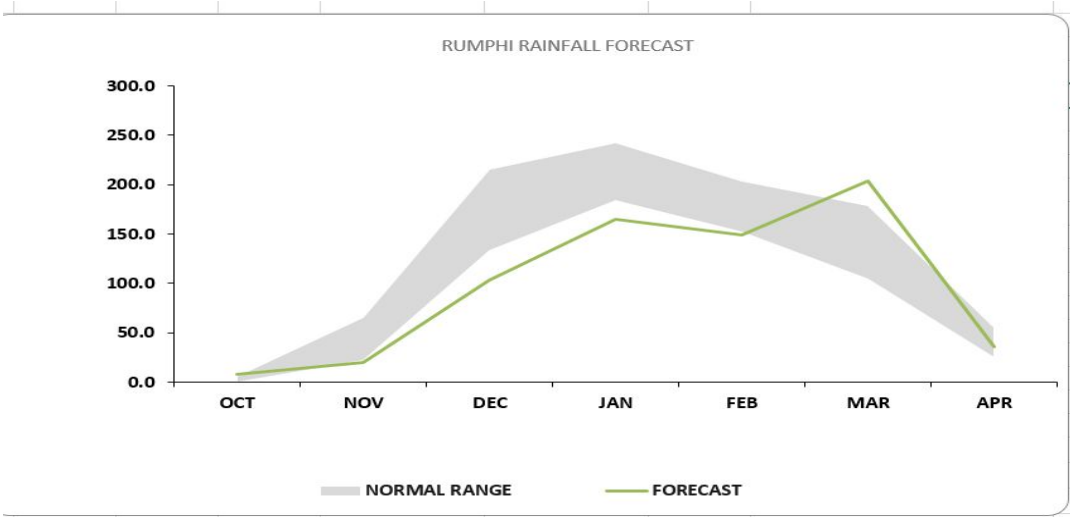
Most areas are likely to receive rainfall between 50 mm and 100 mm.

Seasonal rainfall cessation is expected from first week of April 2026 in most areas of the district.

- Rainfall onset is expected from the second week of December 2025
- Rainfall cessation is expected from the first week of April 2025.
- Seasonal length is likely to be between 110 to 120 days.
- The risk of dry spells in some areas of the district is about a week in January and February 2026.

The table and figure below show monthly rainfall distribution for the season at Rumph Boma with a normal band in grey.

RUMPHI		
MONTH	NORMAL RANGE	FORECAST
OCT	0.0	6.1
NOV	22.4	65.5
DEC	132.8	215.4
JAN	183.8	242.7
FEB	152.6	203.6
MAR	104.6	179.0
APR	24.5	55.8



The forecast will be updated in December 2025

For further information contact: The Director of Climate Change and Meteorological Services, P.O. Box 1808, Blantyre.
Tel +265 1 82 47 12 / Cell: +265 882 26 65 79 Email: metdept@metmalawi.gov.mw; Website: www.metmalawi.gov.mw

Produced and printed with support from:

