



MINISTRY OF NATURAL RESOURCES AND CLIMATE CHANGE

DEPARTMENT OF CLIMATE CHANGE AND METEOROLOGICAL SERVICES



PHALOMBE DISTRICT DOWNSCALED SEASONAL FORECAST, 2025-2026

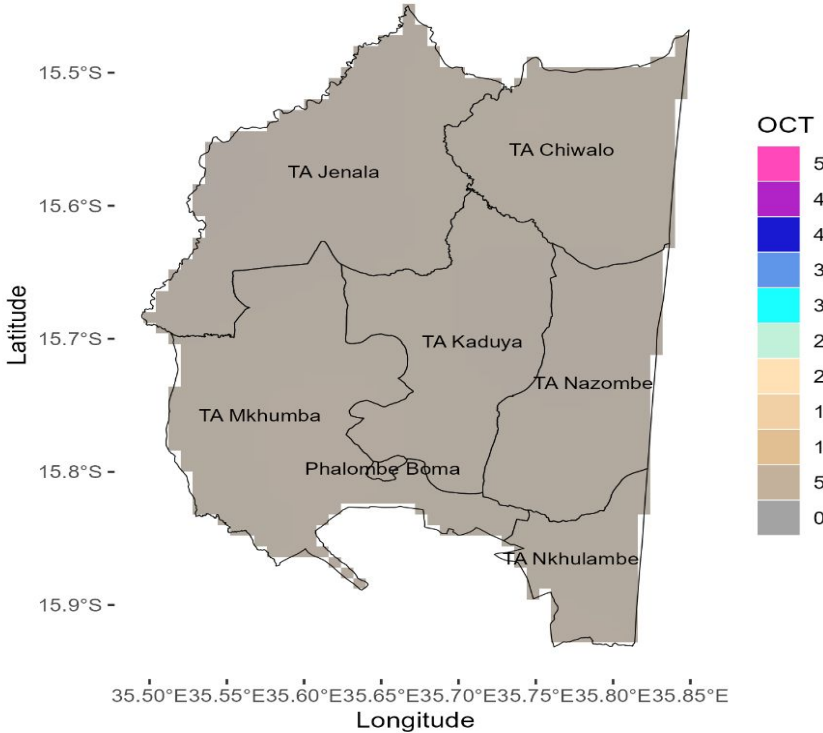
Overview of 2025/2026 Rainfall Season

The 2025/2026 rainfall season is likely to be partly influenced by Neutral El Nino Southern Oscillation conditions in the tropical Pacific Ocean among other factors.

Phalombe is expected to receive **normal to above normal total rainfall amount** during the 2025-2026 rainfall season.

October 2025

OCTOBER 2025 RAINFALL FORECAST

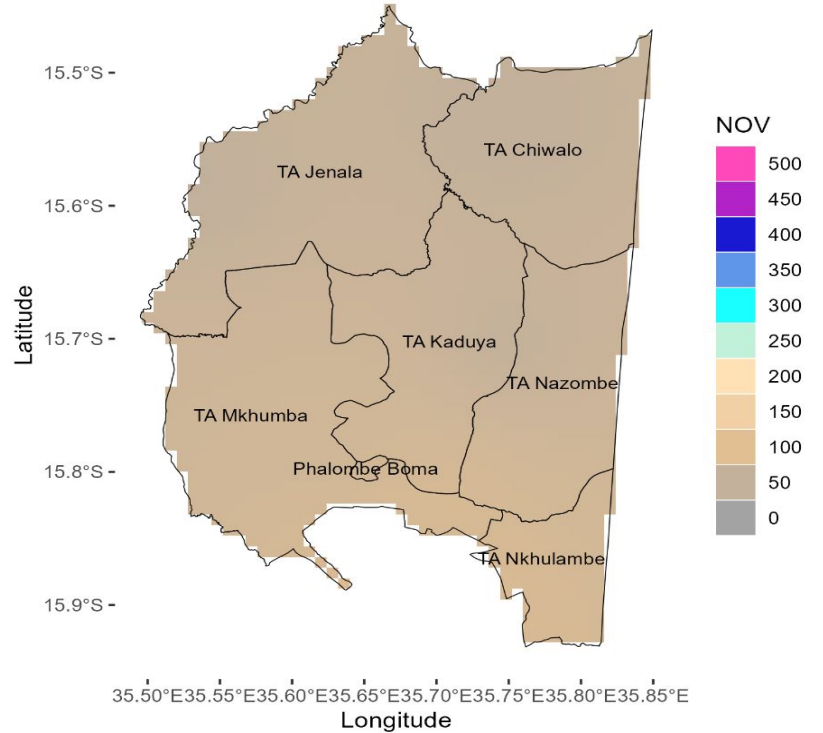


October is expected to be hot and dry with a chance of Chizimalupya rains.

These rains are usually accompanied by lightning and gusty winds.

November 2025

NOVEMBER 2025 RAINFALL FORECAST

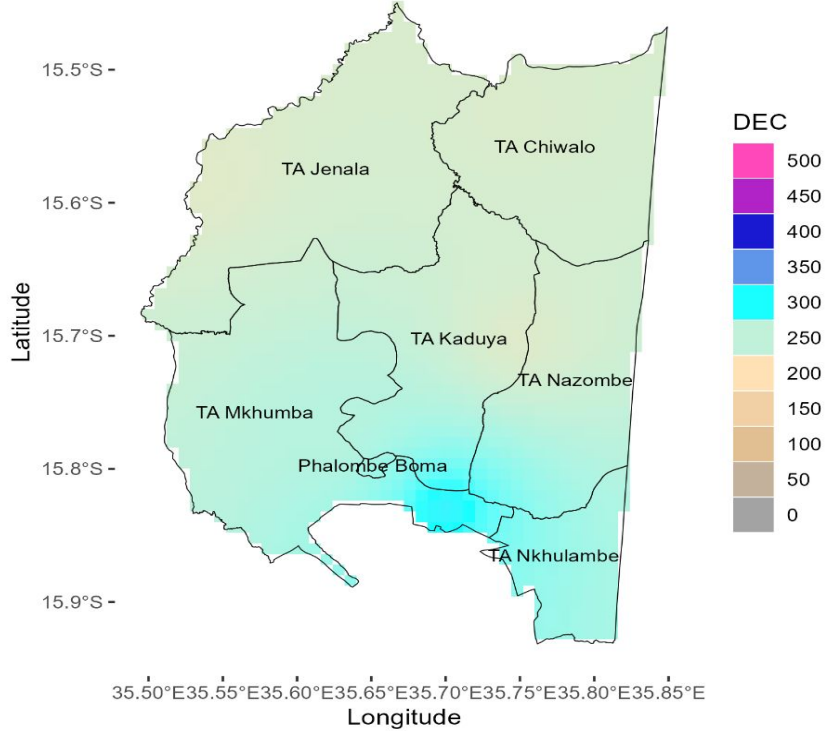


Normal to below-normal rainfall amounts are expected, except for some areas in T/A Mkhumba, T/A Kaduya and Phalombe Boma where normal to above-normal rainfall amounts are expected.

Expect the rains to be accompanied by gusty winds and lightning.

December 2025

DECEMBER 2025 RAINFALL FORECAST

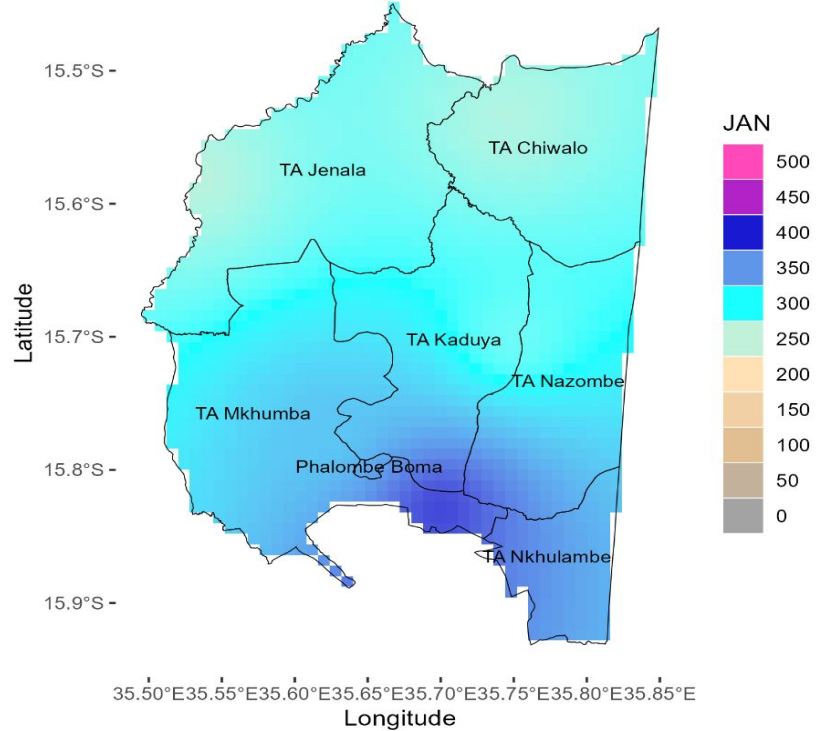


Normal to above-normal rainfall, ranging from 250mm to 300mm, is expected over Phalombe in December.

The rainfall onset is expected from mid December,2025

January 2026

JANUARY 2026 RAINFALL FORECAST

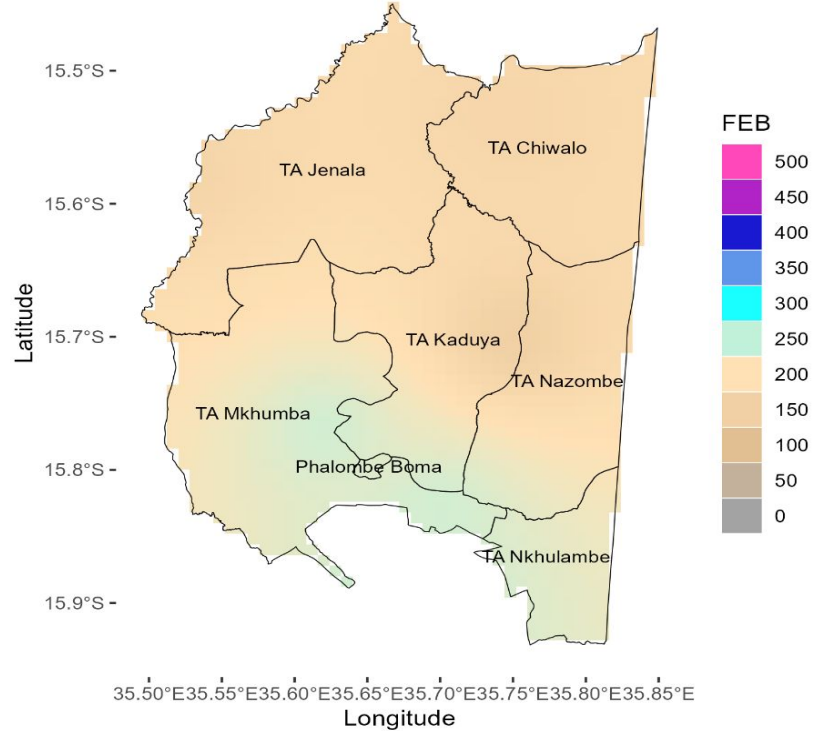


The month of January is expected to be very wet across the district.

Most areas at TA Mkhumba, TA Nazombe, TA Nkhulambe, TA Kaduya and areas around Phalombe Boma are expected to receive rainfall ranging from 350-400 mm.

February 2026

FEBRUARY 2026 RAINFALL FORECAST

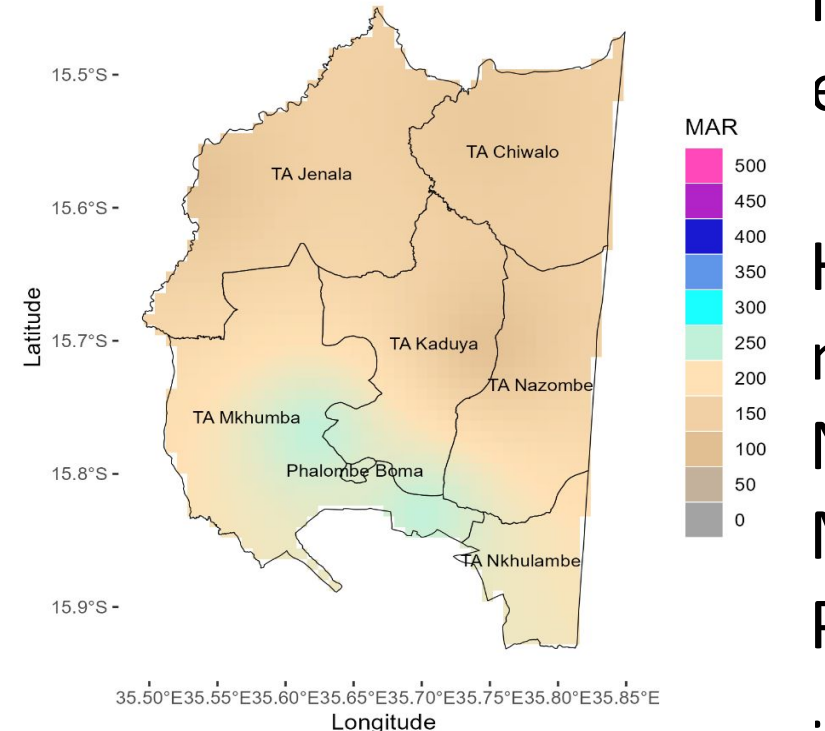


Normal to above normal rainfall amounts ranging from 200 mm to 250 mm are anticipated in Phalombe.

However, there is a likelihood of dry spells of about 7 days during the month.

March 2026

MARCH 2026 RAINFALL FORECAST

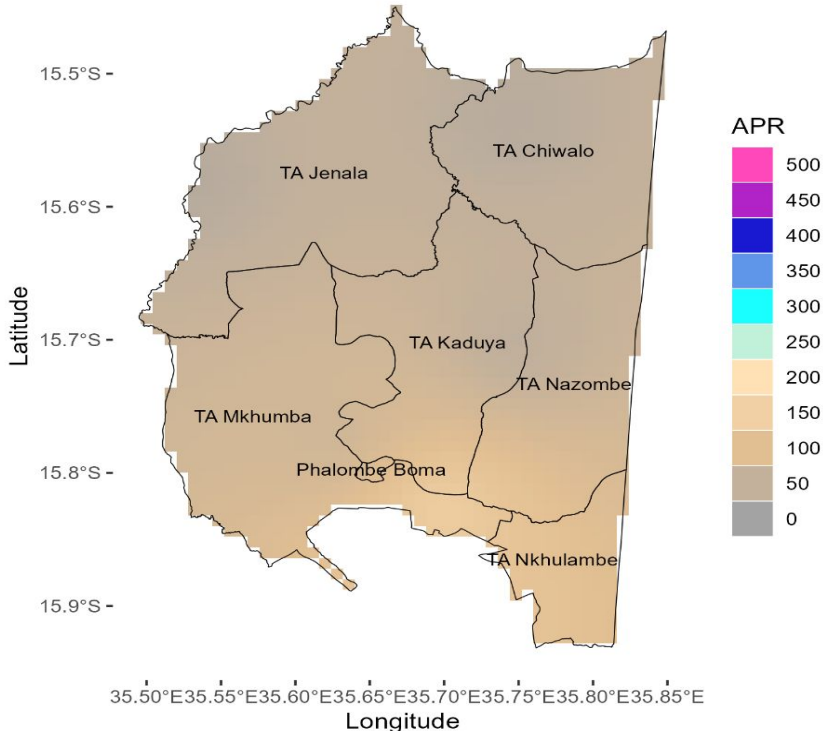


Normal to above normal rainfall is expected in many areas.

High rainfall amounts of about 250 mm are expected in areas of TA Nazombe, TA Kaduya, TA Mkhumba and areas around Phalombe Boma.

April 2026

APRIL 2026 RAINFALL FORECAST



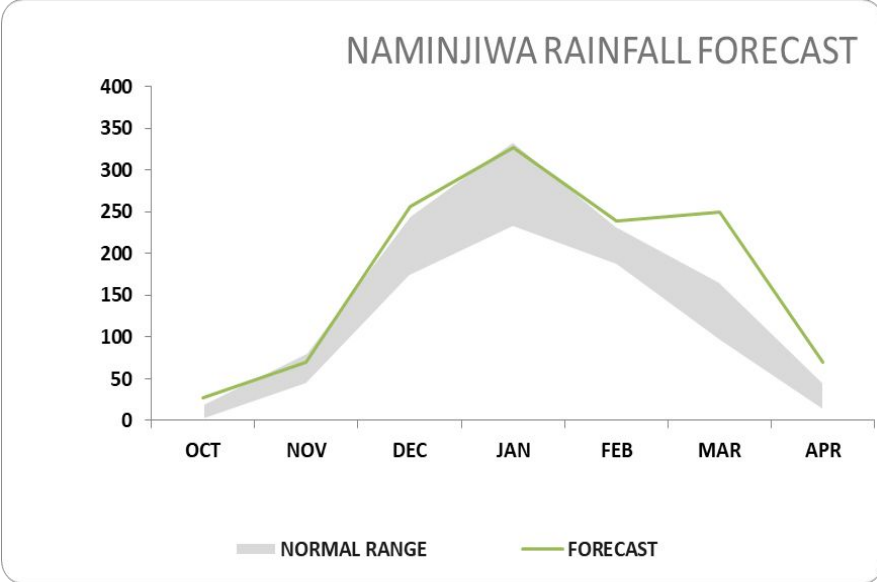
Many areas are likely to receive above normal rainfall amounts of about 150mm.

The rains are expected to come to an end by early April.

- Rainfall onset is **expected** in mid December
- **Cessation** early April, 2026.
- Dry spells of about one week in both January and February are presaged.
- The season is expected to last **120-130 days**.

The table and figure below show monthly rainfall distribution at Naminjiwa for the season with a normal band in grey.

NAMINJIWA			
MONTH	NORMAL RANGE		FORECAST
OCT	1.428	19.352	27.4
NOV	44.355	80.462	69.7
DEC	173.135	244.262	256.8
JAN	231.224	333.64	326.9
FEB	186.838	232.72	239
MAR	95.57	165.709	249.4
APR	12.14	44.544	70



The forecast will be updated in December 2025

For further information contact: The Director of Climate Change and Meteorological Services, P.O. Box 1808,Blantyre.
Tel +265 1 82 47 12 / Cell: +265 882 26 65 79 Email: metdept@metmalawi.gov.mw; Website: www.metmalawi.gov.mw

Produced and printed with support from:

