



MINISTRY OF NATURAL RESOURCES AND CLIMATE CHANGE

DEPARTMENT OF CLIMATE CHANGE AND METEOROLOGICAL SERVICES

MACHINGA DISTRICT DOWNSCALED SEASONAL FORECAST, 2025-2026

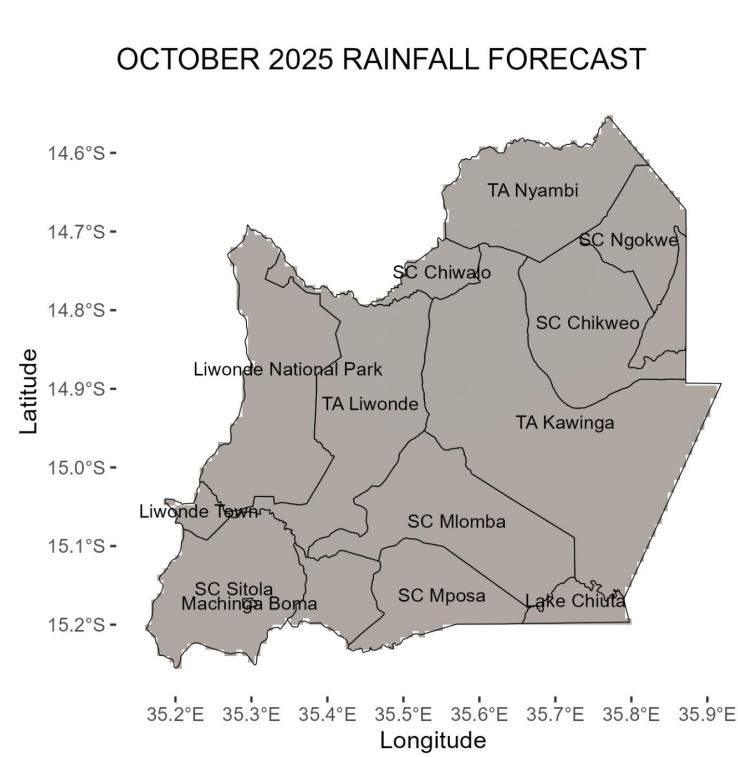


Overview of 2025/2026 Rainfall Season

The 2025/2026 rainfall season is likely to be partly influenced by Neutral El Nino Southern Oscillation conditions in the tropical Pacific Ocean among other factors.

Machinga district is expected to receive **normal to below normal total rainfall amounts** during the 2025-2026 rainfall season.

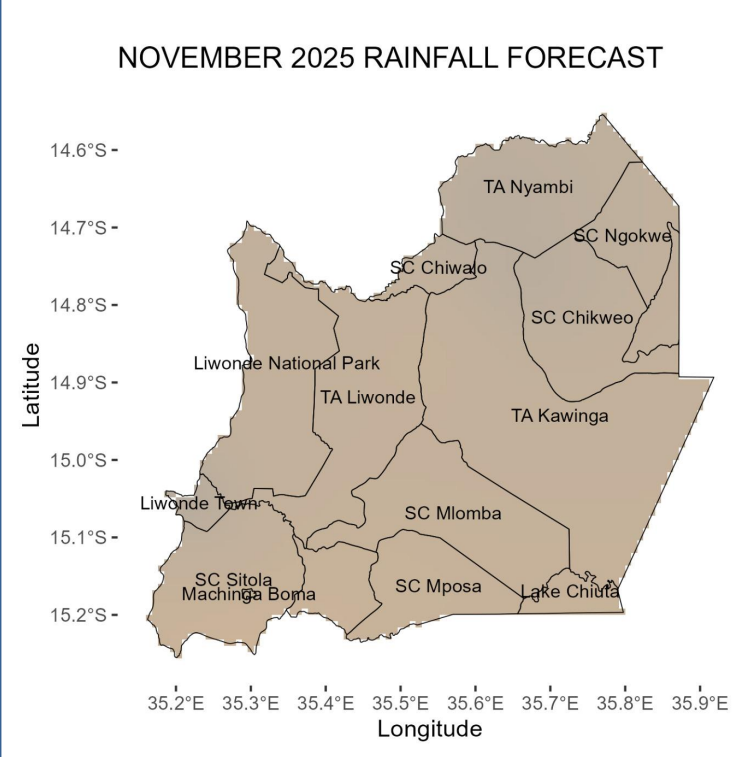
October 2025



Generally dry and hot conditions are expected during this month, however, Chizimalupsya rains of less than 30mm are anticipated.

Gusty winds and lightning are more likely during this month.

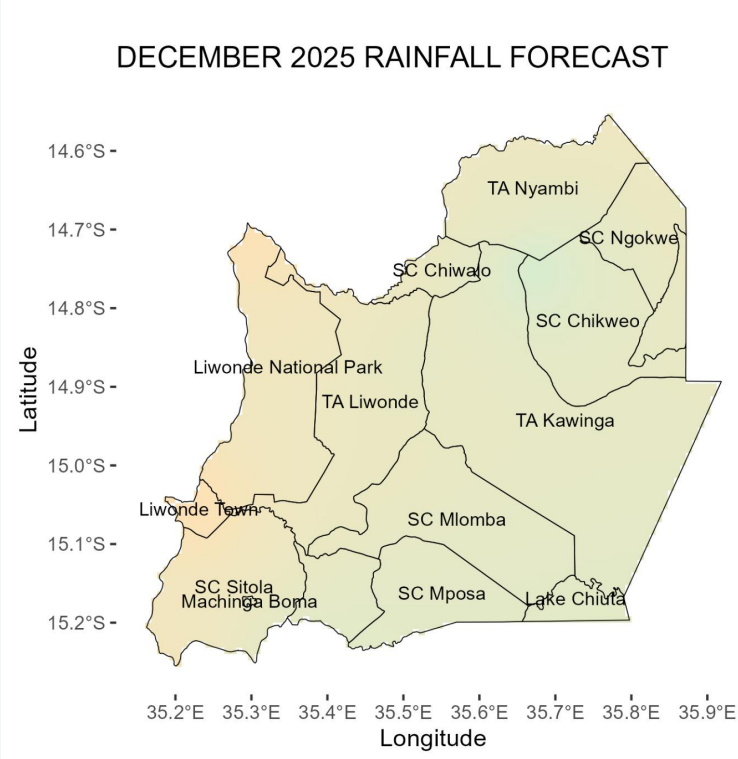
November 2025



In November, normal to below normal rainfall amounts are expected of less than 50mm in most areas.

The rainfall is likely to be accompanied by gusty winds and lightning.

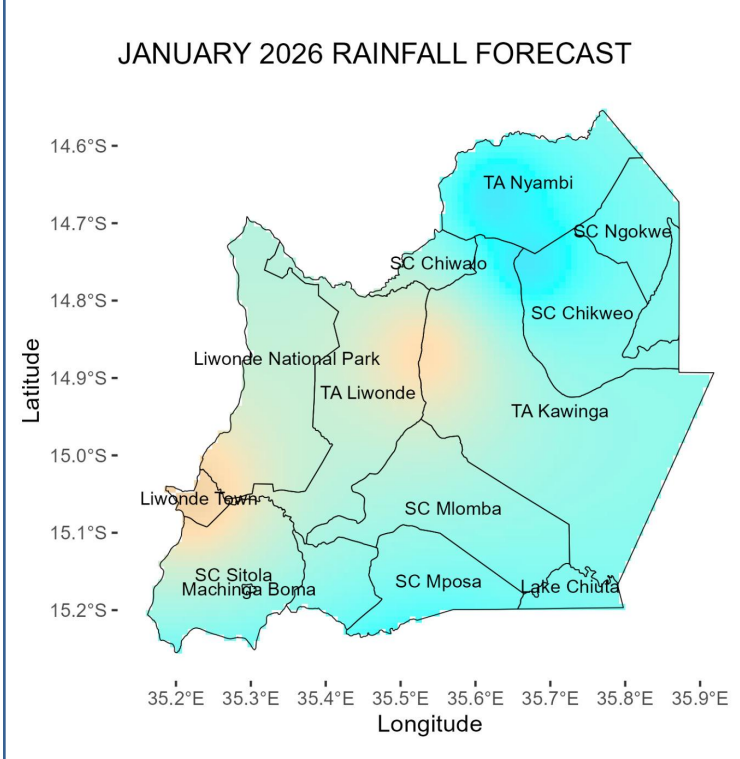
December 2025



Normal to below normal rainfall amounts are expected during this month with rainfall amounts ranging between 200mm and 250mm in most areas. However, some areas of SC Chikweo and TA Kawinga may receive rainfall amounts exceeding 250mm.

The rainfall onset is expected from the mid-December.

January 2026

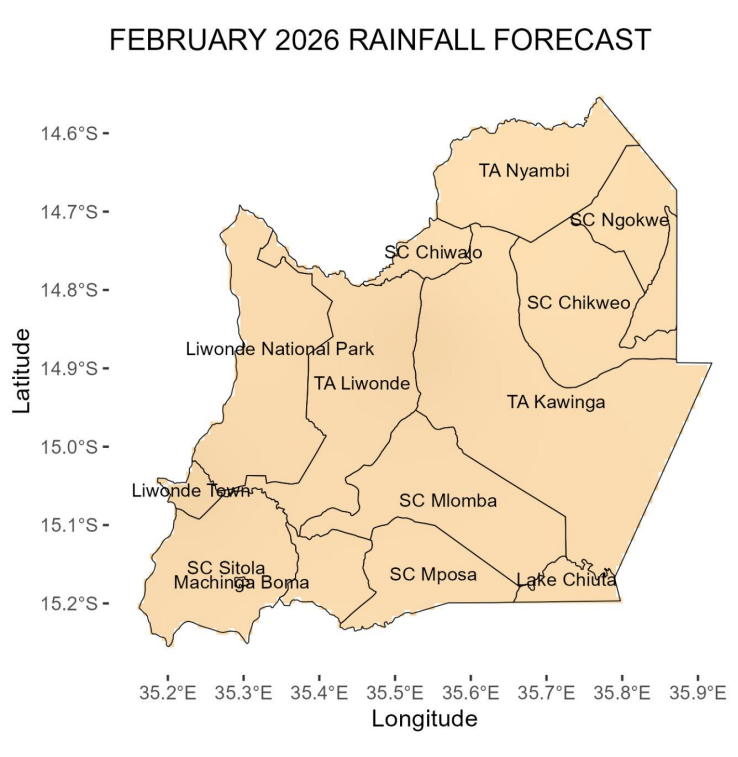


The month of January is expected to be wet with normal to above normal rainfall amounts ranging from 250mm to 300mm.

However, few areas around T/A Kawinga, T/A Liwonde, Liwonde National Park and Liwonde Town may receive rainfall amounts below 250mm.

Dry spells of less than a week are likely during this month.

February 2026

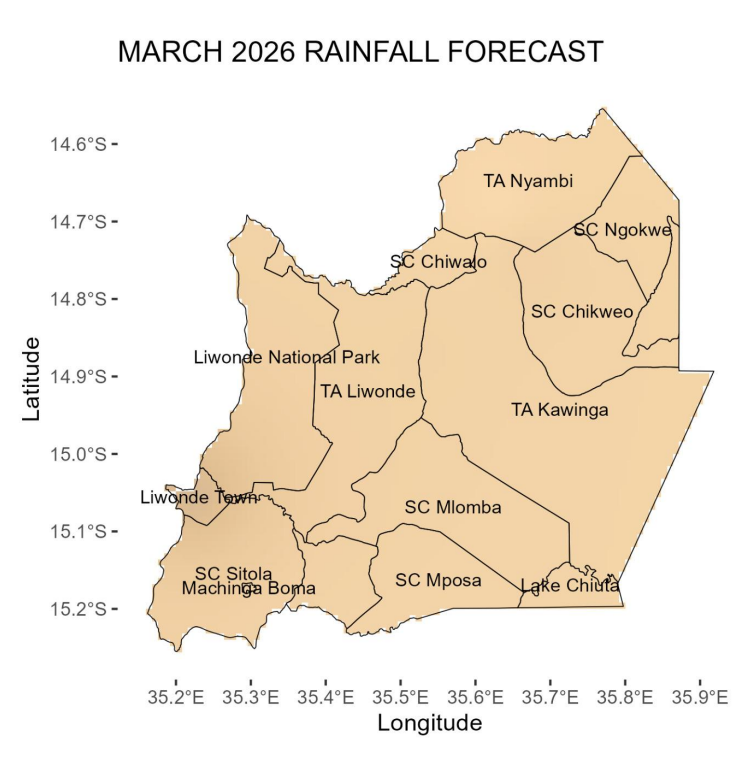


February is expected to receive normal rainfall amounts ranging from 150mm to 200mm over most areas.

Pockets of below normal rains may also be experienced over some areas during this month

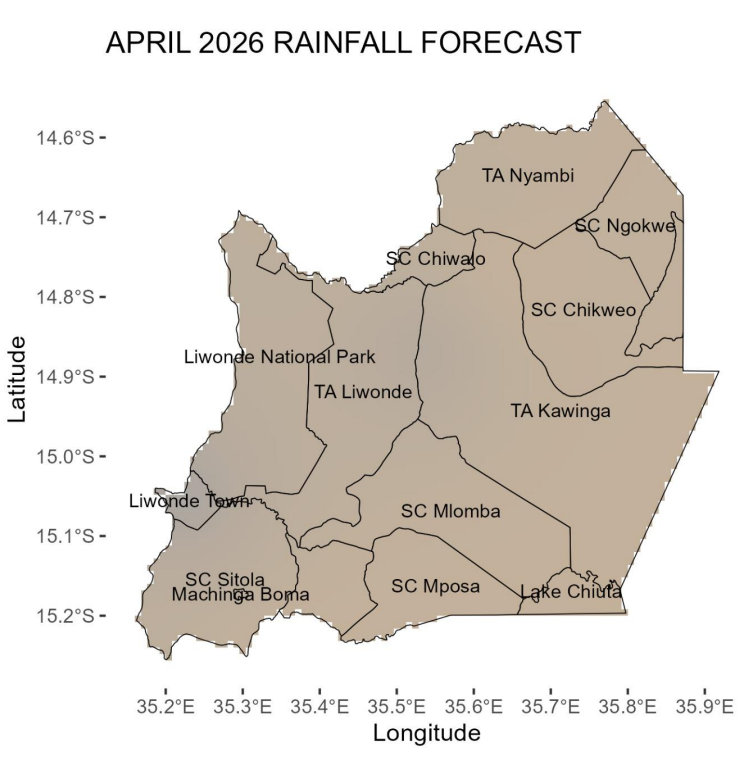
Dry spells of about a week are likely during this month.

March 2026



In March, generally normal rainfall amounts are expected ranging from 150mm to 200mm in most areas.

April 2026

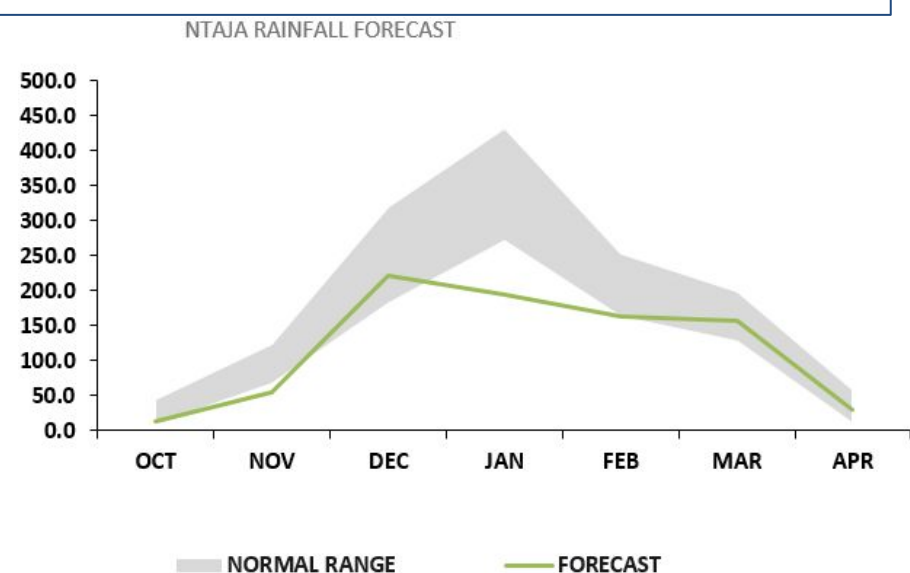


Generally normal to below normal rainfall amounts are expected of less than 50mm over most areas.

The cessation is expected in first week of April.

- **Rainfall onset** is expected from mid-December 2025
 - **Rainfall cessation** is expected from the first week of April 2026.
 - The **seasonal length** is expected from 110 to 120 days.
 - Dry spells of about a week are expected in January and February 2026.
- The table and figure below show the monthly rainfall distribution for the season with a normal band in grey.

NTAJA		
MONTH	NORMAL RANGE	FORECAST
OCT	9.8	44.6
NOV	66.6	123.2
DEC	182.7	319.5
JAN	270.9	432.1
FEB	163.6	252.1
MAR	127.6	199.3
APR	10.8	59.2



The forecast will be updated in December 2025

For further information contact: The Director of Climate Change and Meteorological Services, P.O. Box 1808,Blantyre.
Tel +265 1 82 47 12 / Cell: +265 882 26 65 79 Email: metdept@metmalawi.gov.mw; Website: www.metmalawi.gov.mw

Produced and printed with support from:

