



UNDUNA WA ZACHILENGEDWE NDI KUSINTHA KWA NYENGO

NTHAMBI YOONA ZA NYENGO NDI KUSINTHA KWA NYENGO

ULOSI WA KAGWEDWE KA MVULA M'BOMA LA CHIKWAWA, 2024-2025



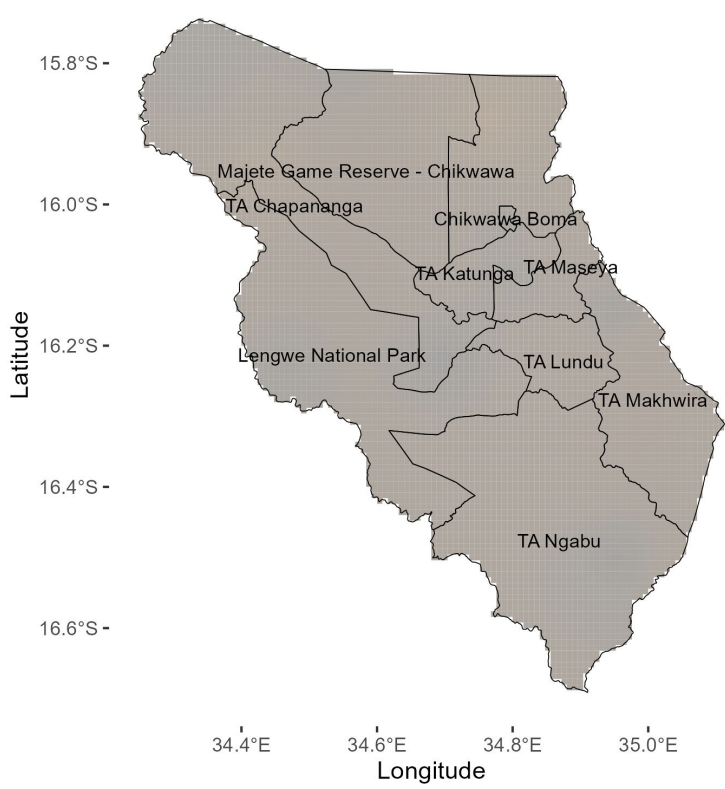
Overview of 2024/2025 Rainfall Season

Nyengo ya dzinja ya 2024/2025 ikuyembekezeka kukhudzidwa ndi **La Nina wochepa mphamvu**. **La Nina** ndi kuzizira kopoera mlingo kwa madzi pakati cha kum'mawa kwa nyanja ya mchere ya Pacific.

Boma la Chikwawa likuyembekezeka kulandira mvula ya mlingo okhazikika kapena kuchepela apo kuchoka mwezi wa October mpaka December 2024. Mlingo wa mvula yokhazikika kapena kupyolera apo ukuyembekezeka kuchoka mwezi wa January kufika April 2025.

October 2024

OCTOBER 2024 RAINFALL FORECAST.

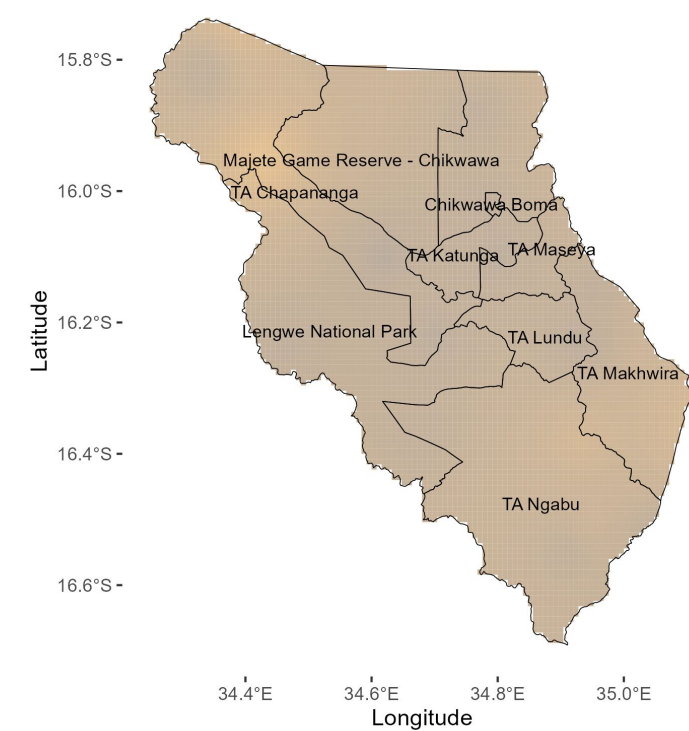


Madera ambiri akuyembekezeka kukhala opanda mvula mwezi wa October komabe mvula ya chizimalupsa ikhoza kuzagwa m'madera owerengeka.

Mvulayi ikhoza kukhala ya ziphaliwali komanso ya mphepo ya mkuntho

November 2024

NOVEMBER 2024 RAINFALL FORECAST.

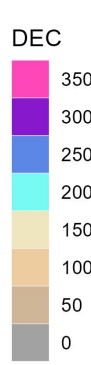
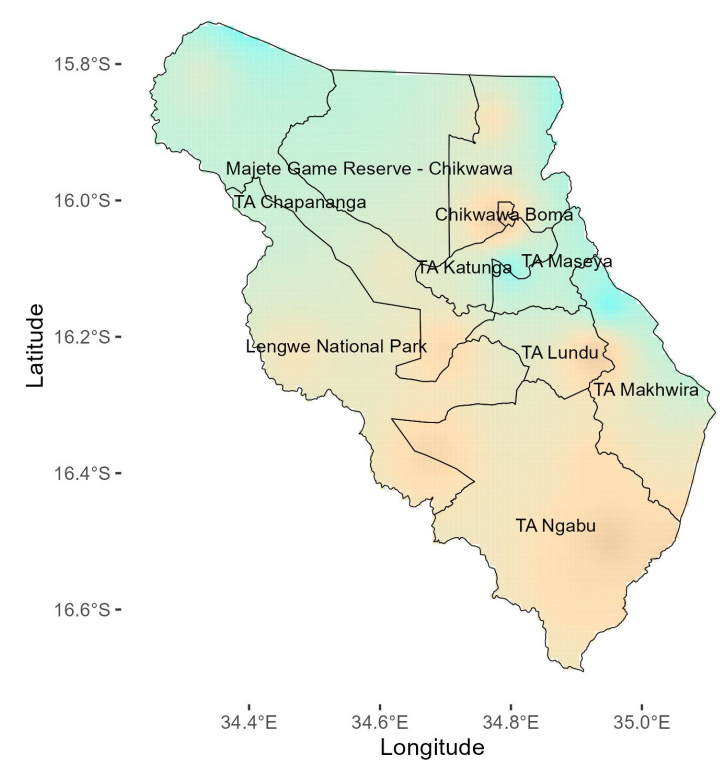


Mlingo wa mvula okhazikika kapena kuchepela apo ukuyembekezeka mwezi wa November.

Mvula yokhazikika ikuyembekezeka kuyambira ku mapeto a mwezi wa November mpaka mayambiro a mwezi wa December.

December 2024

DECEMBER 2024 RAINFALL FORECAST.

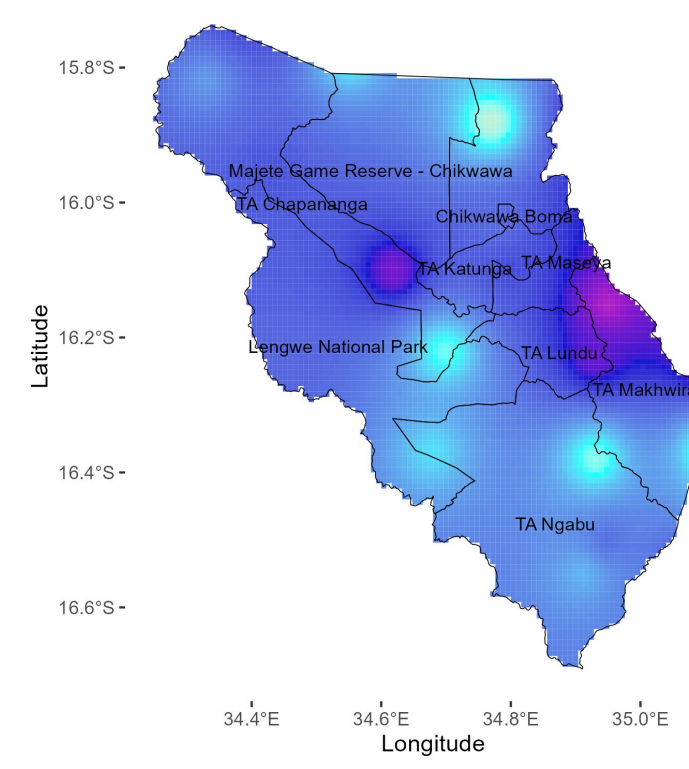


Mlingo wa mvula wa pakati pa 100mm ndi 200mm ukuyembekezeka m'bomali mwezi wa December 2024.

Madera ena monga a TA Ngabu, Lengwe National Park, TA Lundu, TA Makwira ndi Chikwawa boma akuyembekezeka kulandira mvula ya mlingo okhazikika kapena kuchepela apo.

January 2025

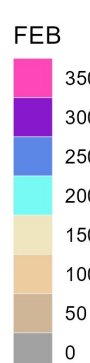
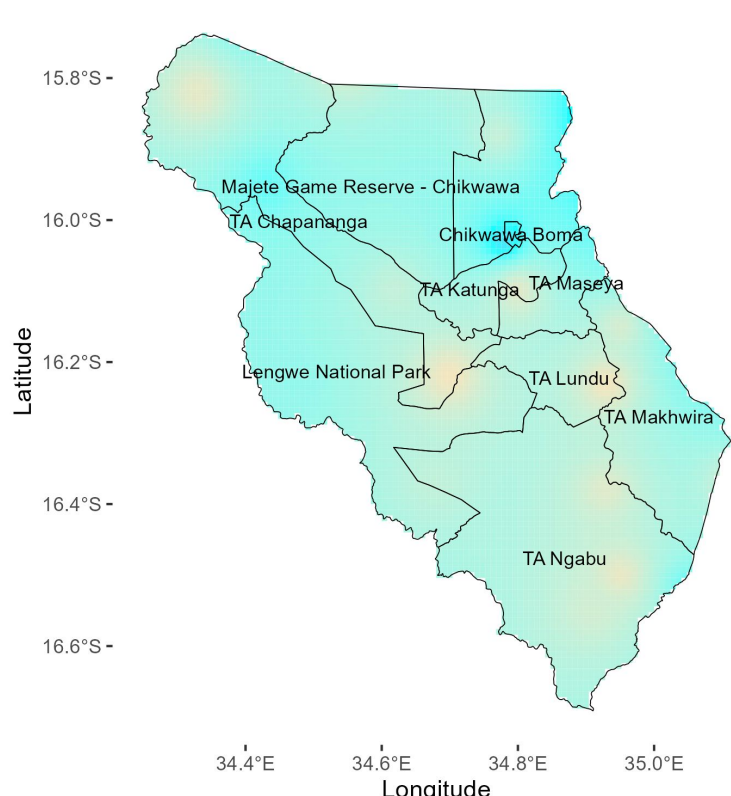
JANUARY 2025 RAINFALL FORECAST.



Mlingo wa mvula wa pakati pa 250mm ndi 300mm ukuyembekezeka m'bomali mwezi wa January 2025. Uwu ndi mlingo opyola mlingo okhazikika kwa TA Ngabu, TA Lundu, Lengwe National Park, Chapananga.

February 2025

FEBRUARY 2025 RAINFALL FORECAST.

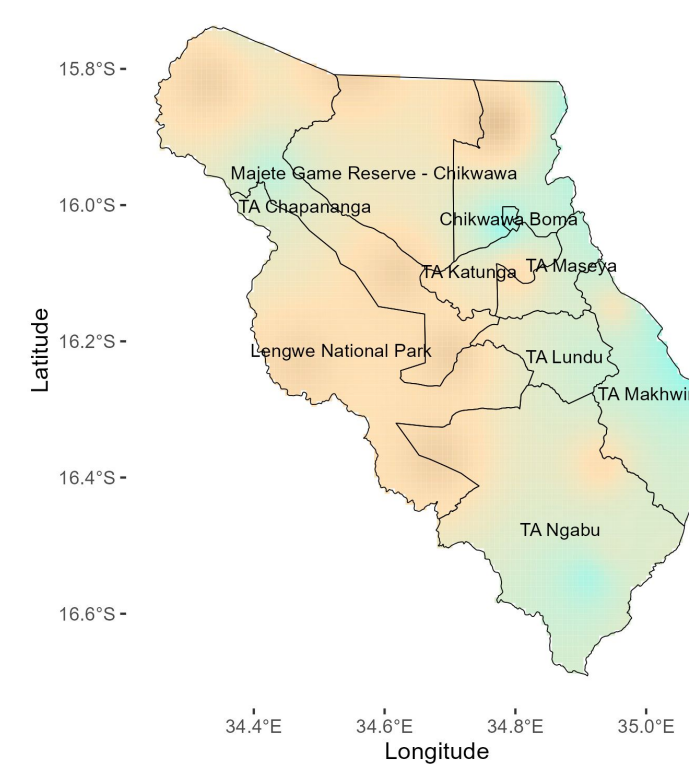


Mlingo wa mvula wa pakati pa 150mm ndi 200mm ukuyembekezeka kuzagwa m'bomali mwezi wa February 2025.

Mvula ikuyembekezekayi ndi mlingo okhazikika kapena kupyola m'madera ambiri m'bomali. Komabe pali kuthekera kwa ng'amba yofika masiku asanu ndi awiri m'madera ena.

March 2025

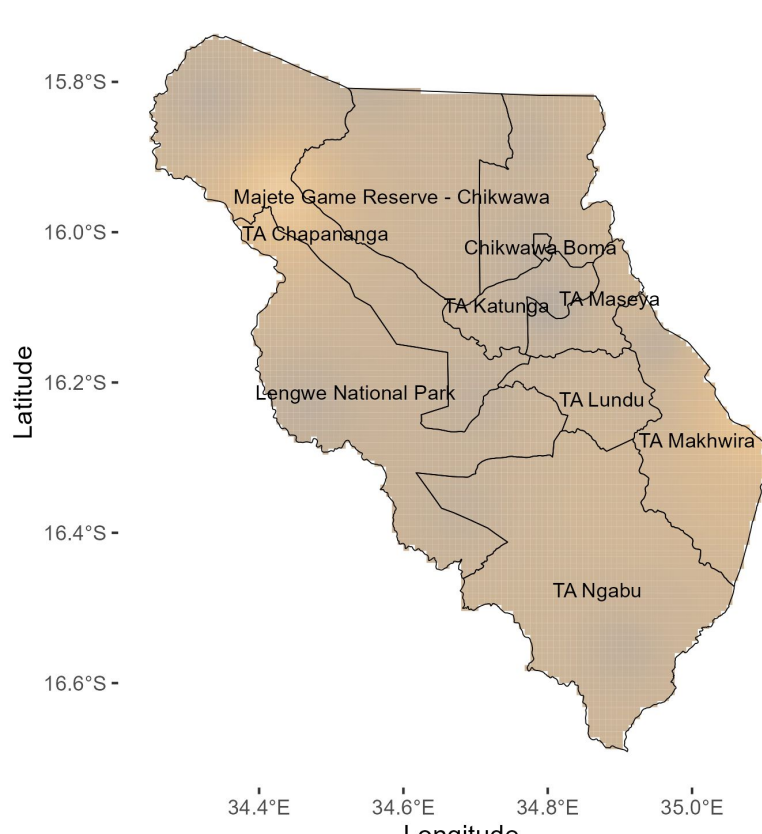
MARCH 2025 RAINFALL FORECAST.



Mlingo wa mvula wa pakati pa 150mm ndi 200mm ukuyembekezeka kuzagwa m'madera ambiri a kumwera komanso ku mmawa kwa bomali. Mlingo wa pakati pa 100mm ndi 150mm ukuyembekezeka kuzagwa maderu aku mpoto, pakati komanso kumazulo a bomali.

April 2025

APRIL 2025 RAINFALL FORECAST.



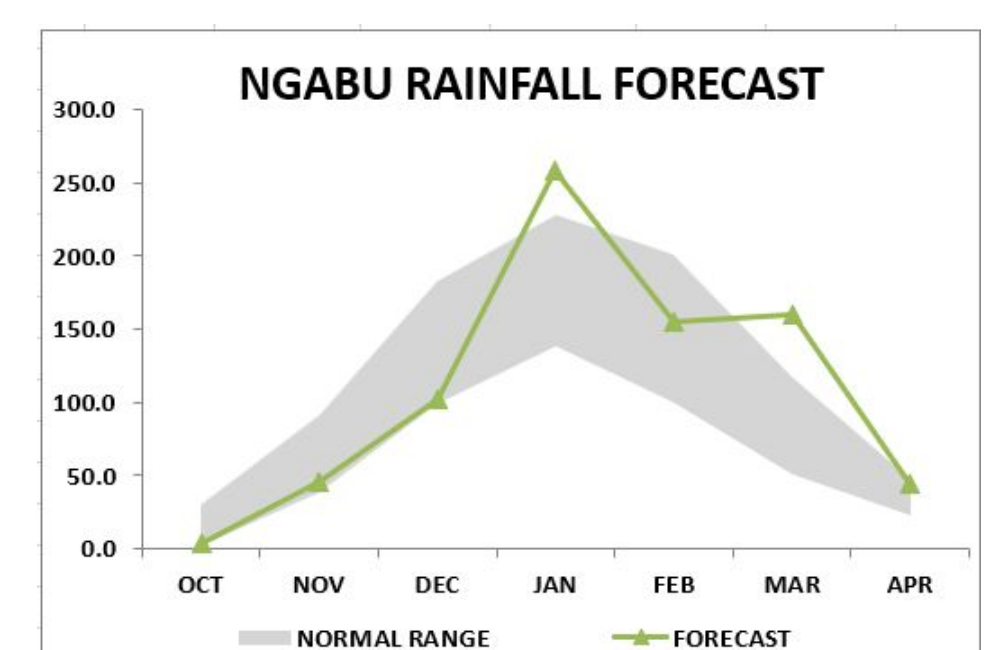
Mlingo ya mvula wa pakati pa 50mm ndi 100mm ukuyembekezeka kudzagwa m'bomali mwezi wa April 2025.

Mlingo umenewu ndi okhazikika kapena kupyola apo m'bomali. Dzinjali likuyembekezeka kufika kumapeto kumayambiro a mwezi wa April.

Mvula yokhazikika ikuyembekezeka kuyamba ku mapeto a mwezi wa November ndi ku mayambiro a mwezi wa December 2024. Dzinjala likuyembekezeka kufika kumapeto kumayambiro a mwezi wa April. Dzinjali likuyembekezeka kukhala lotalika masiku 100 ndi 120.

Ndondomeko ya kagwedwe ka mvula ili musimu:

NGABU		
MONTH	NORMAL RANGE	FORECAST
OCT	1.8	30.4
NOV	38.4	92.2
DEC	99.5	182.8
JAN	138.4	227.6
FEB	99.9	200.4
MAR	51.2	117.2
APR	22.2	47.5



Ulosi uwasindikizidwanso mu mwezi wa December 2024

Mukafuna kudziwa zambiri lemburani kwa:
The Director of Climate Change and Meteorological Services, P.O. Box 1808, Blantyre.
Tel +265 1 82 47 12 / Cell: +265 882 26 65 79 Email: metdept@metmalawi.gov.mw; Website: www.metmalawi.gov.mw

Zasindikizidwa ndi thandizo lochokera ku:

