



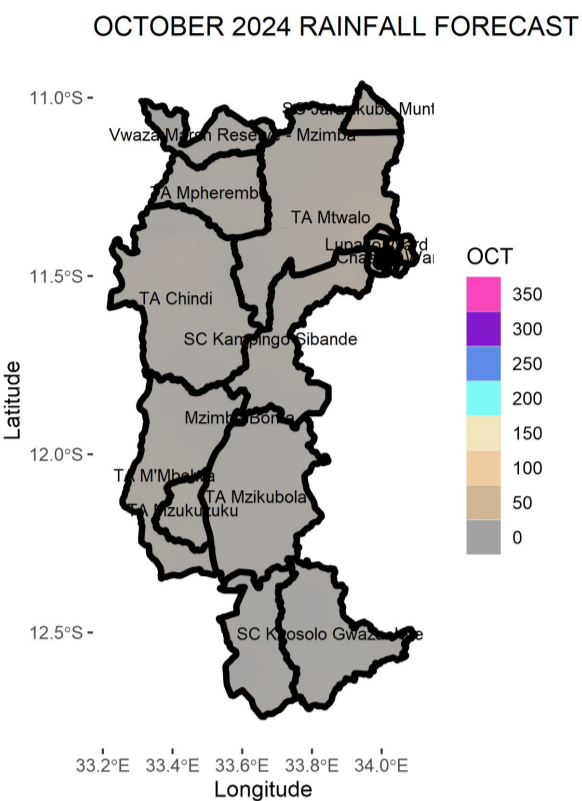
MZIMBA DISTRICT DOWNSCALED SEASONAL FORECAST, 2024-2025

OVERVIEW OF 2024/2025 RAINFALL SEASON

The 2024-2025 rainfall season is expected to be influenced by a **weak La Nina**. **La Nina** is the unusual cooling of ocean waters over the eastern-central equatorial Pacific Ocean.

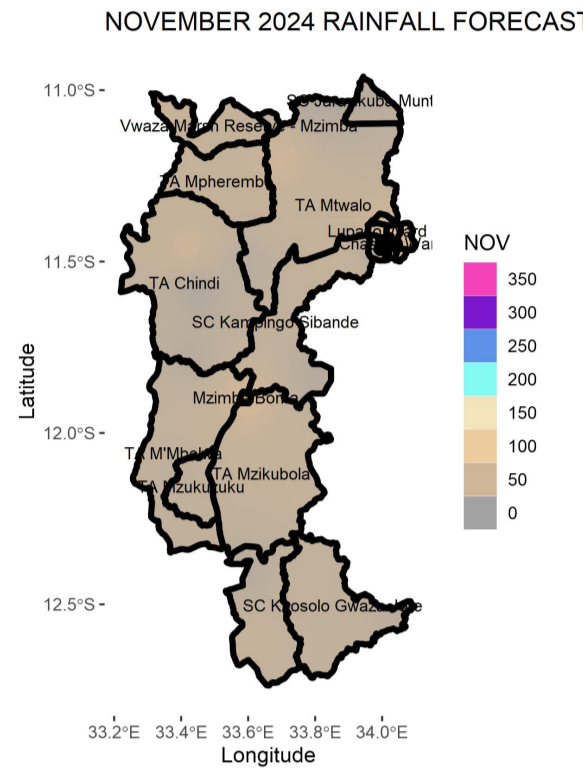
Mzimba district is forecasted to receive **normal to below-normal** total rainfall amounts during October to December 2024, however **normal to above-normal** during from January to April 2025.

October 2024



Mzimba is expected to have generally dry conditions during October, with Chizimalupysa rains possibility over few areas.

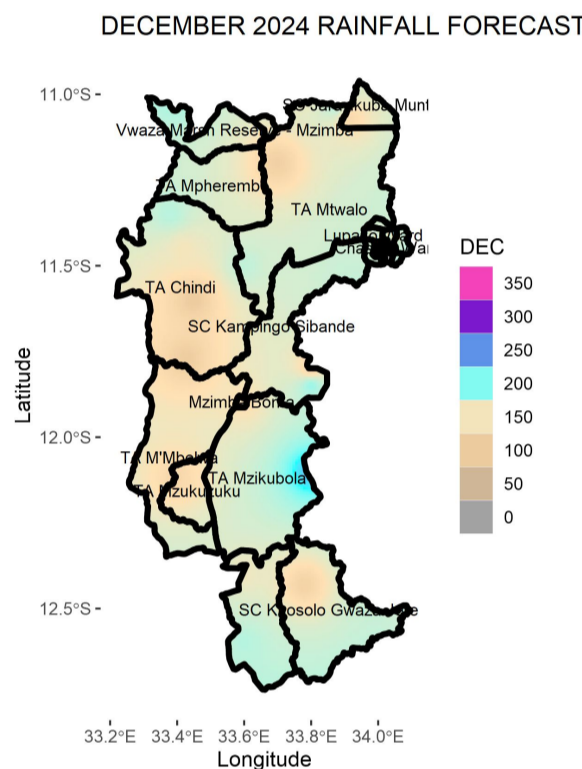
November 2024



Expect rainfall amounts ranging from 50mm to 100mm in Mzimba during the month of November, representing below normal rainfall amounts.

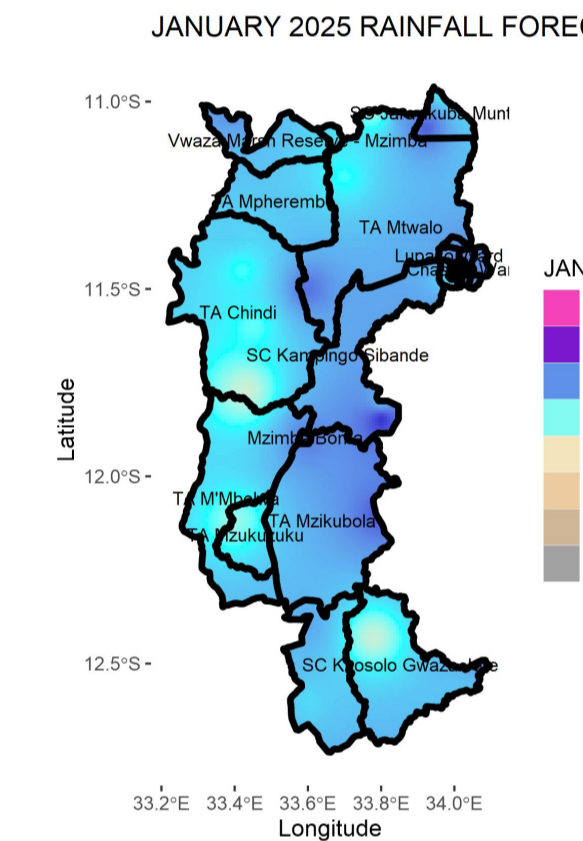
Onset of the season is expected from the last week of November to the second week of December 2024

December 2024



Expect an improvement in rainfall over Mzimba in December with most areas likely to receive rainfall amounts in the range of 100mm to 150mm. Rainfall about 200mm are possible over areas around TA Mzikubola, TA Mtwalo, TA Mpherembe and part of TA Chindi. These are normal to above normal amounts.

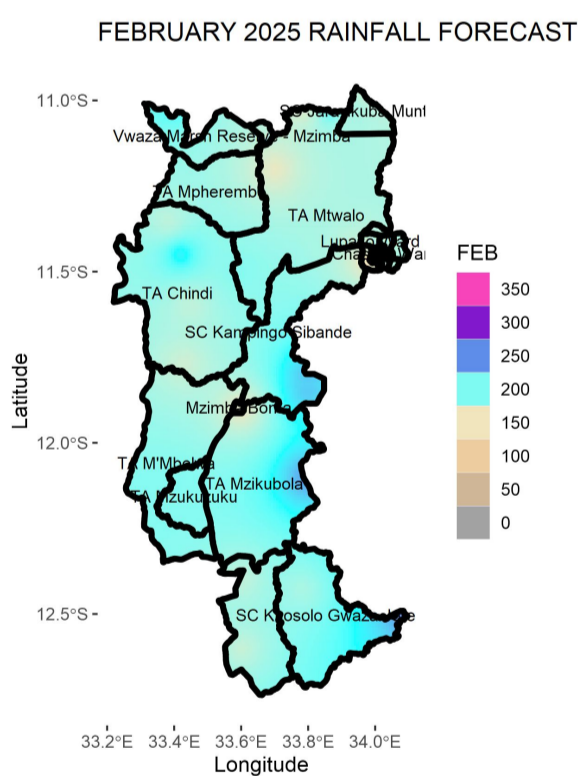
January 2025



Normal to above-normal rainfall amounts exceeding 200mm are possible in most areas in Mzimba. Expect mostly high rainfall amounts of about 250 to 300mm over TA Mzikubola, Chindi, Mpherembe, and M'Mbelwa. January is expected to be the wettest month.

Reduced rainfall is expected over SC Khosolo and TA Mzukuzuku.

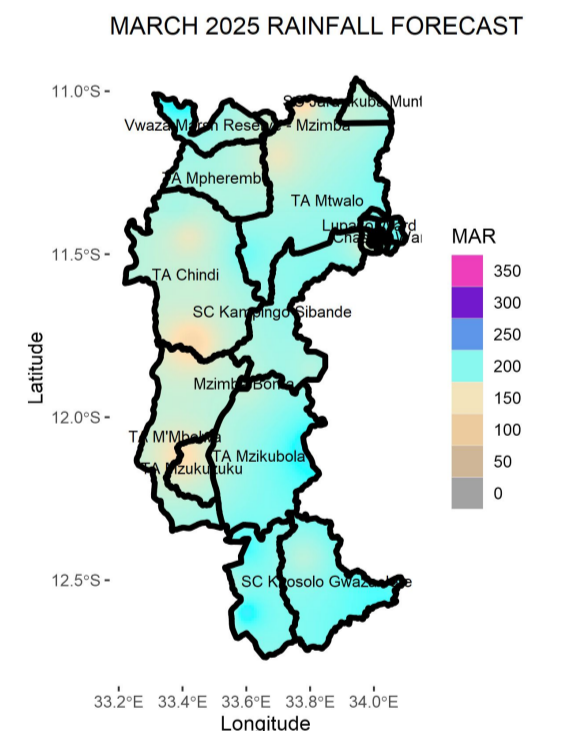
February 2025



Normal to above-normal rainfall is expected continue during February. Rainfall of about 200mm in most areas. However areas around Mzimba Boma, SC Khosolo and part of TA Mtwalo may experience normal to below-normal rainfall amounts of about 100mm.

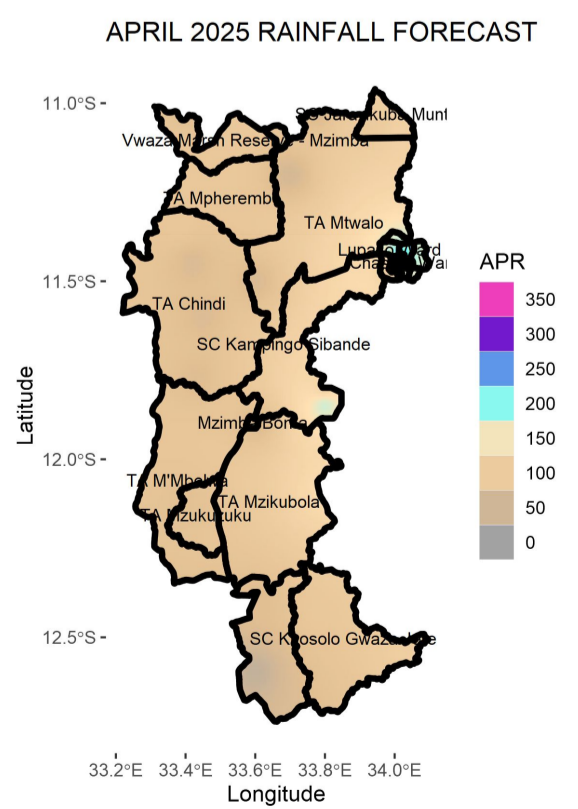
At least a two weeks dry spell is likely during this month.

March 2025



Most areas in Mzimba will continue to receive rainfall amounts about 200mm in March except few areas around TAs M'Mbelwa, Mzukuzuku, Chidi, Mtwalo and SC Kapingo which may receive about 150mm total rainfall amounts.

April 2025



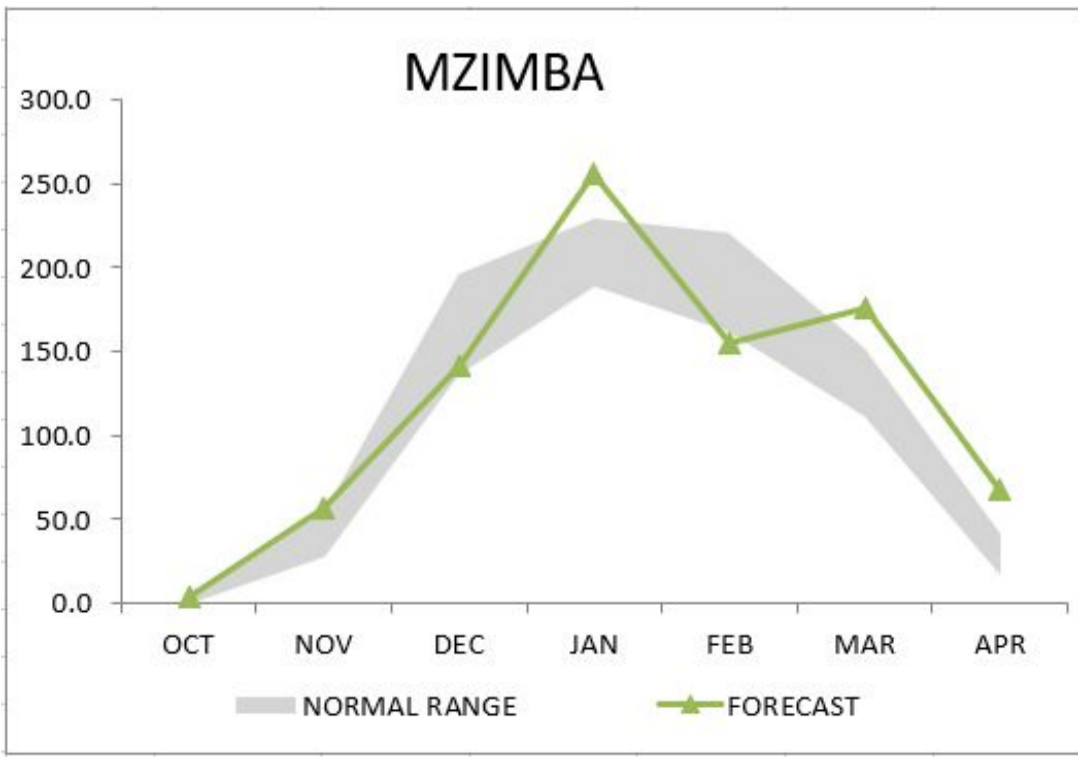
Rainfall amounts between 50 to 100mm are possible during April, representing above-normal to normal rainfall totals for this month.

Cessation will be in April for most parts of Mzimba

Rainfall is expected to begin between the last week of November to the second week of December 2024. Cessation likely occurring between early April and the end of April. The season may last between 110 and 140 days. There is a high risk of experiencing dry spells lasting around two weeks in January and February.

The table and figure below show monthly rainfall distribution for the season with a normal band in grey.

MZIMBA		
MONTH	NORMAL RANGE	FORECAST
OCT	0.0	2.0
NOV	28.1	54.5
DEC	135.4	196.1
JAN	188.4	229.2
FEB	161.3	221.2
MAR	111.3	151.8
APR	16.0	40.9



The forecast will be updated in December 2024

For further information contact: The Director of Climate Change and Meteorological Services, P.O. Box 1808, Blantyre.
Tel +265 1 82 47 12 / Cell: +265 882 26 65 79 Email: metdept@metmalawi.gov.mw; Website: www.metmalawi.gov.mw

Produced and printed with support from:

