



Overview of 2024/2025 Rainfall Season

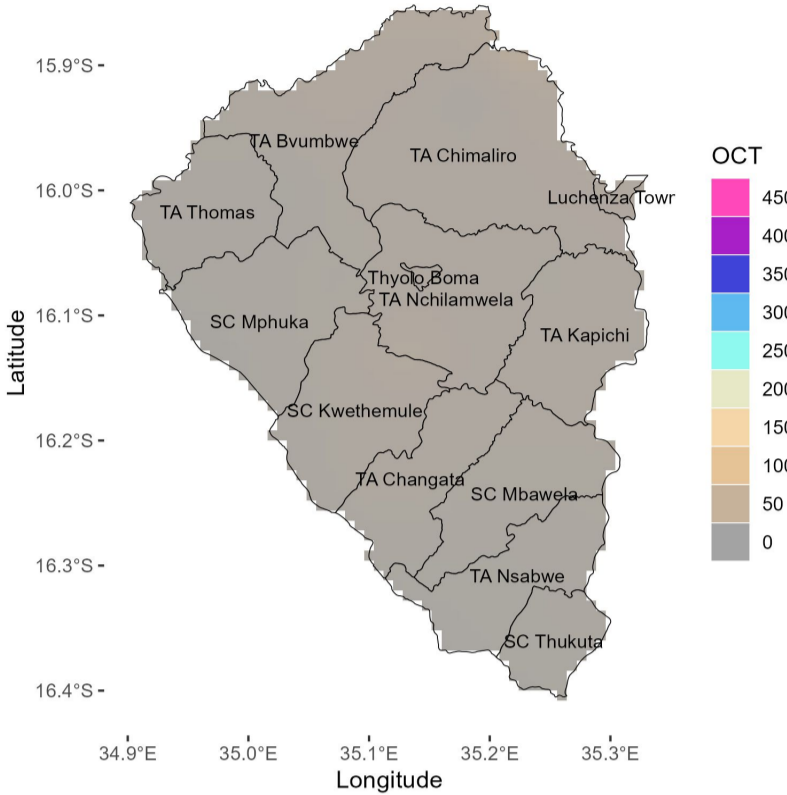
The 2024-2025 rainfall season is expected to be influenced by a weak La Nina. La Nina is the unusual cooling of ocean waters over the eastern-central equatorial Pacific Ocean.

Thyolo is forecasted to receive **normal to above normal** rainfall. However, there is chance of **below normal** rainfall during October and November.

October 2024

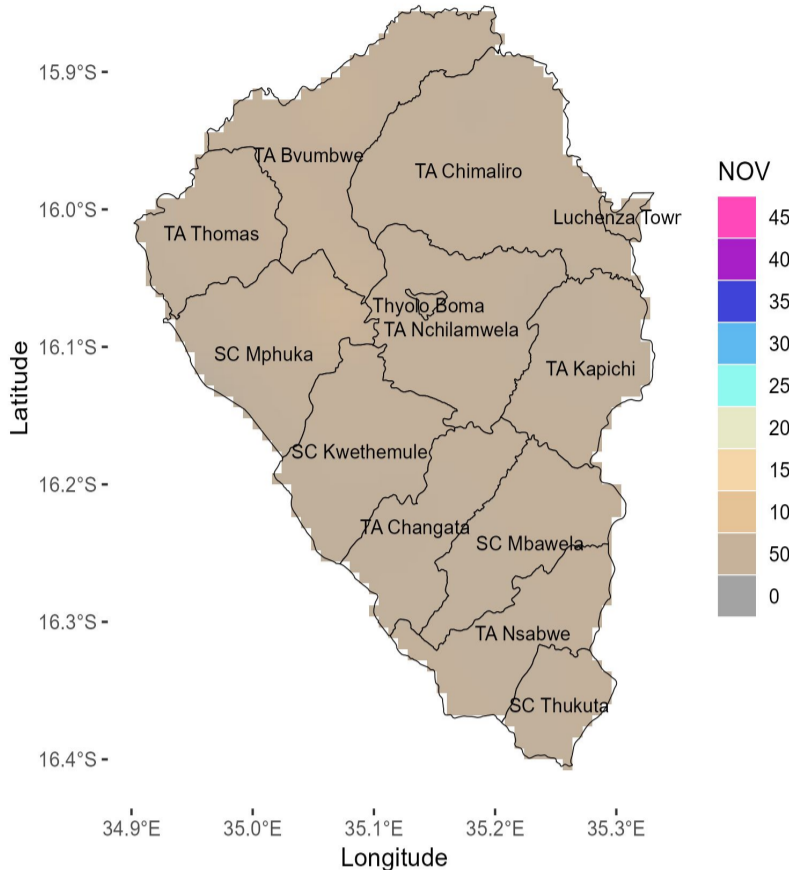
November 2024

OCTOBER 2024 RAINFALL FORECAST



October is expected to be a hot and a dry month in Thyolo. However, the forecast suggests chance of *Chizimalupysa* rains may occur in some areas of the district.

NOVEMBER 2024 RAINFALL FORECAST

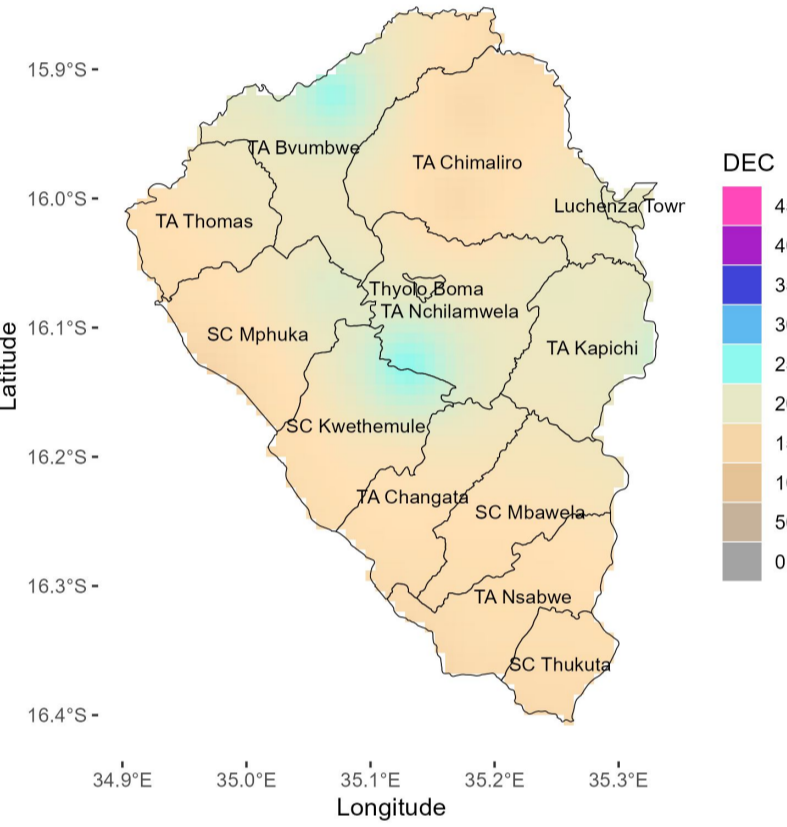


Below normal rainfall amounts are expected this month . Generally dry and hot weather conditions are expected; however occasional Chizimalupsya, gusty winds and lightning associated with thunderstorms can be expected. The isolated thunderstorms events are likely to result in monthly rainfall totals of between 50mm to 100mm in most areas.

December 2024

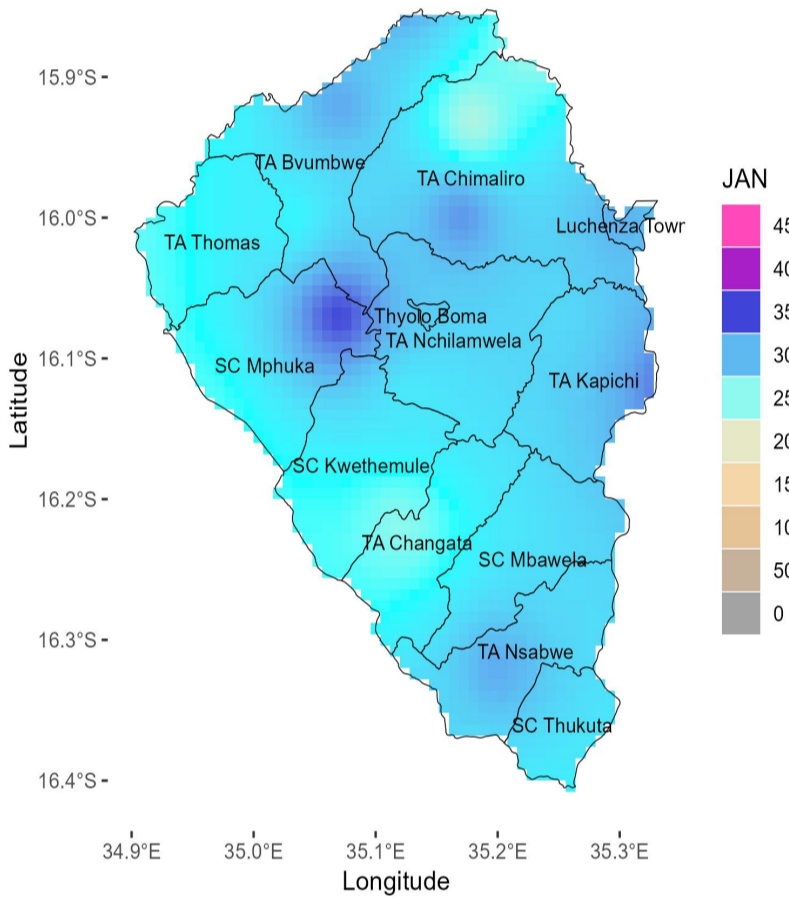
January 2025

DECEMBER 2024 RAINFALL FORECAST



In December, most areas of Thyolo are likely to receive normal to above-normal rainfall amounts ranging between 150mm-200mm. Few areas over TA Bvumbwe and SC Kwethemulo are expected to receive more rainfall reaching up 250mm.

JANUARY 2025 RAINFALL FORECAST

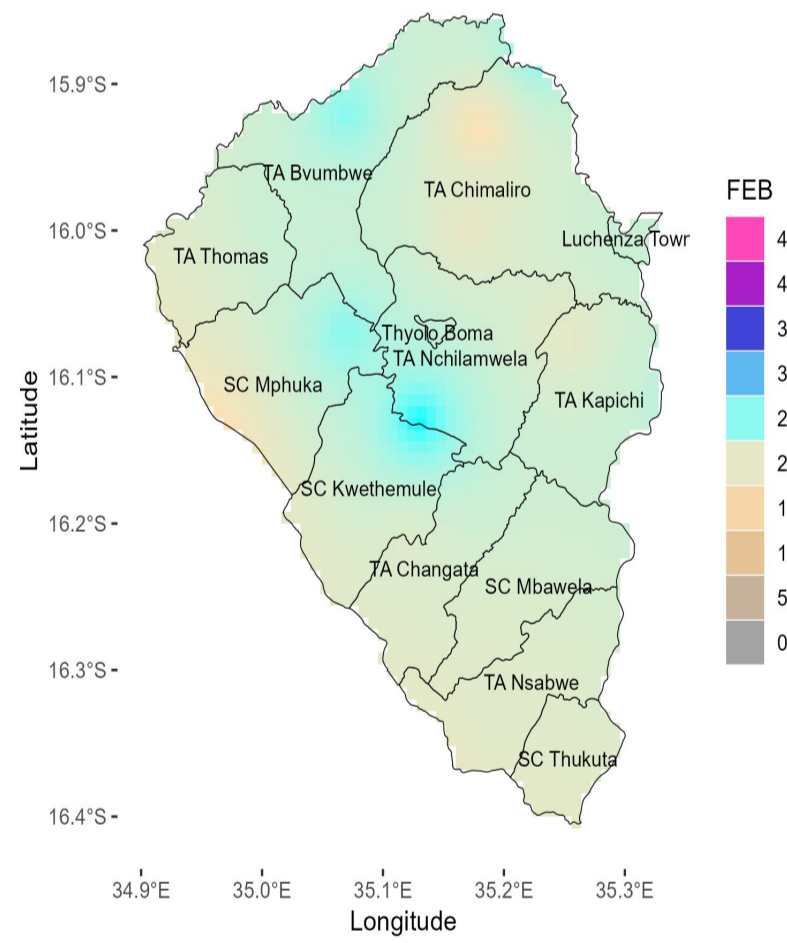


The month of January is expected to be very wet across the district. Most areas such as TA Chimaliro, TA Bvumbwe, TA Nsabwe, TA Kapichi and SC Mphuka are expected to receive rainfall exceeding 300mm.

February 2025

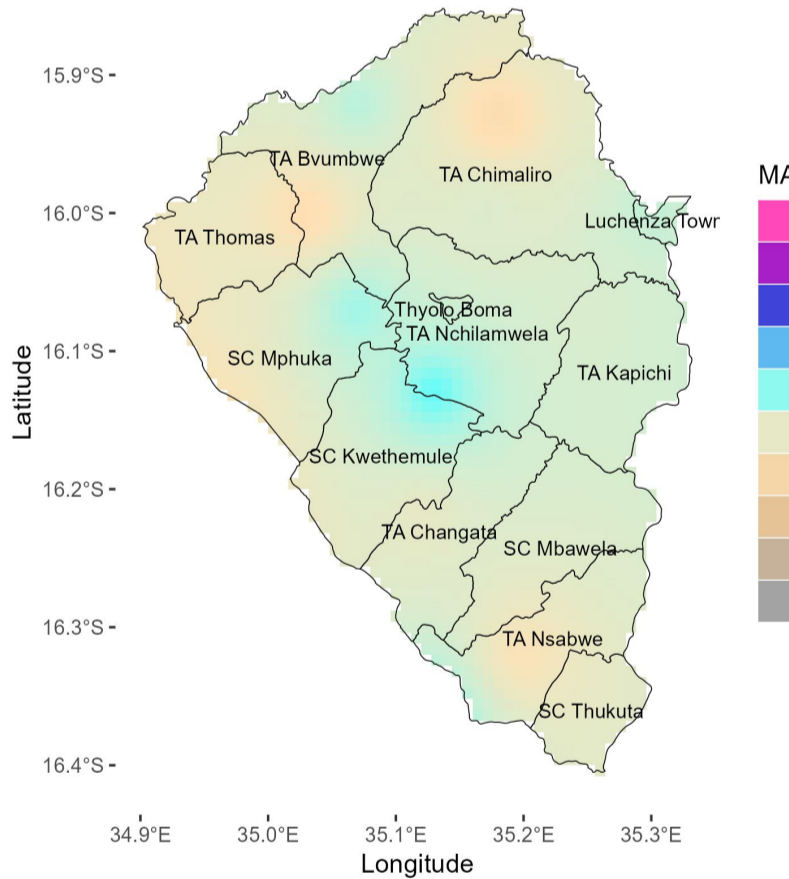
March 2025

FEBRUARY 2025 RAINFALL FORECAST



Normal to above-normal rainfall situation is expected to continue in February. Rainfall amounts are expected to range from 150 mm to 250 mm in most areas.

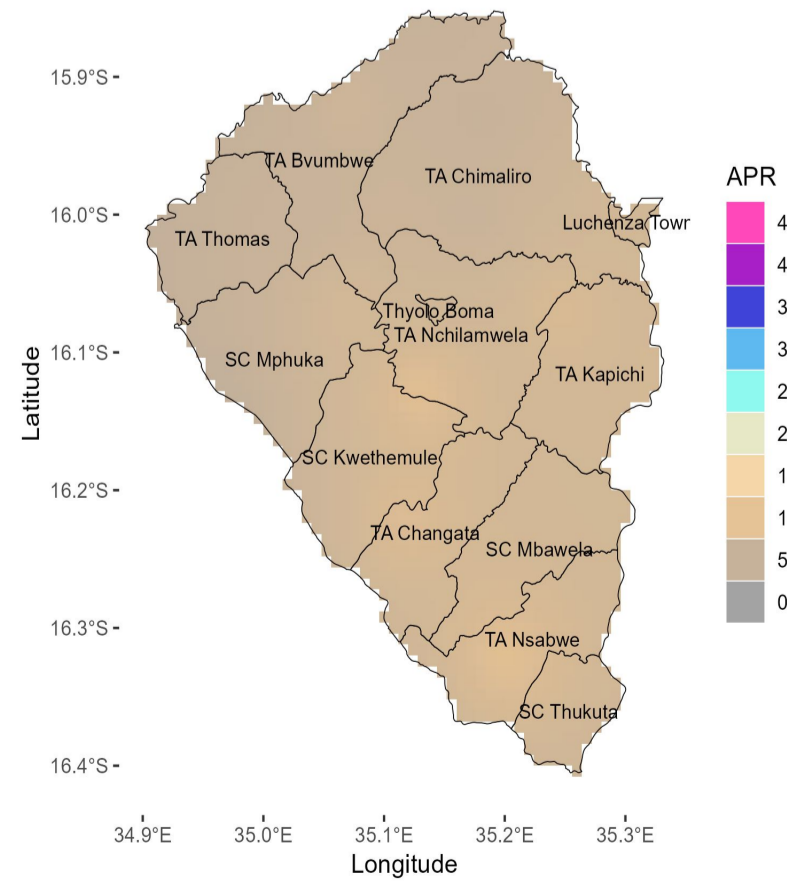
MARCH 2025 RAINFALL FORECAST



Rainfall is expected over many areas in March. Highest rainfall amounts are expected in areas such as TA Nchilamwela and SC Kwethemulo

April 2025

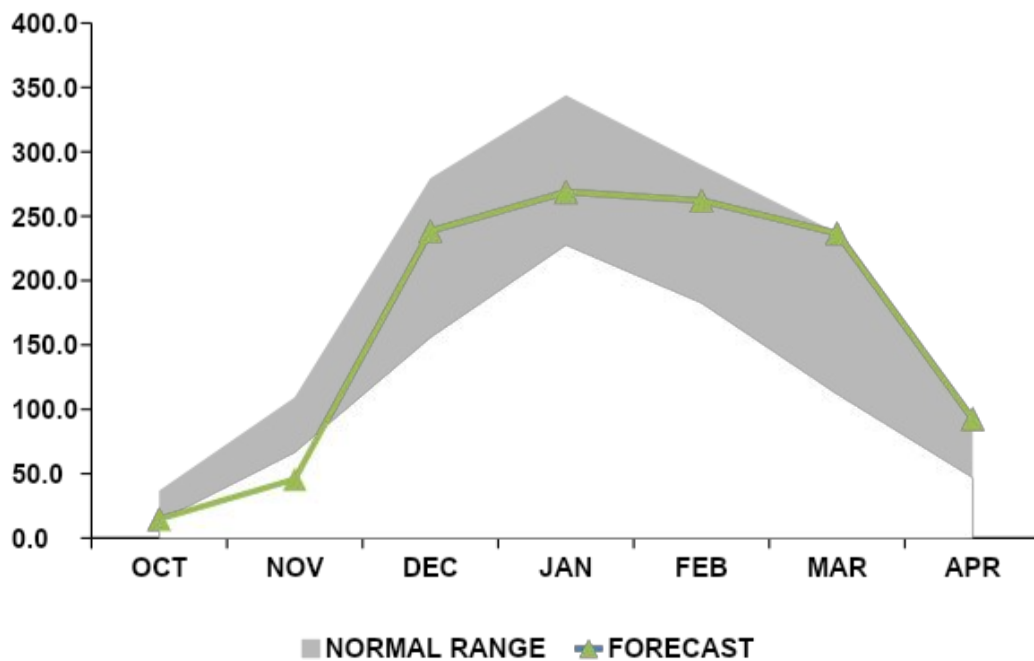
APRIL 2025 RAINFALL FORECAST



Most areas are likely to receive normal to below-normal rainfall amounts ranging from 100mm to 150mm.

- Onset is likely from the **third and fourth week of November 2024**.
- A late cessation is expected from the **second week of April 2025**.
- Season length is expected to range from **120 to 150 days**.
- The risk of dry spells is **moderate**, with at most **2 weeks** dry spells in February.

THYOLO			
MONTH	NORMAL RANGE		FORECAST
OCT	13.1	36.8	14.7
NOV	66.6	109.2	45.7
DEC	155.7	279.6	238.5
JAN	227.5	343.9	268.9
FEB	182.6	289.9	262.2
MAR	111.8	237.0	236.8
APR	46.8	95.2	92.6



The forecast will be updated in December 2024

For further information contact: The Director of Climate Change and Meteorological Services, P.O. Box 1808,Blantyre.
Tel +265 1 82 47 12 / Cell: +265 882 26 65 79 Email: metdept@metmalawi.gov.mw; Website: www.metmalawi.gov.mw

Produced and printed with support from:

