



MINISTRY OF NATURAL RESOURCES AND CLIMATE CHANGE

DEPARTMENT OF CLIMATE CHANGE AND METEOROLOGICAL SERVICES



NTCHEU DISTRICT DOWNSCALED SEASONAL FORECAST, 2024-2025

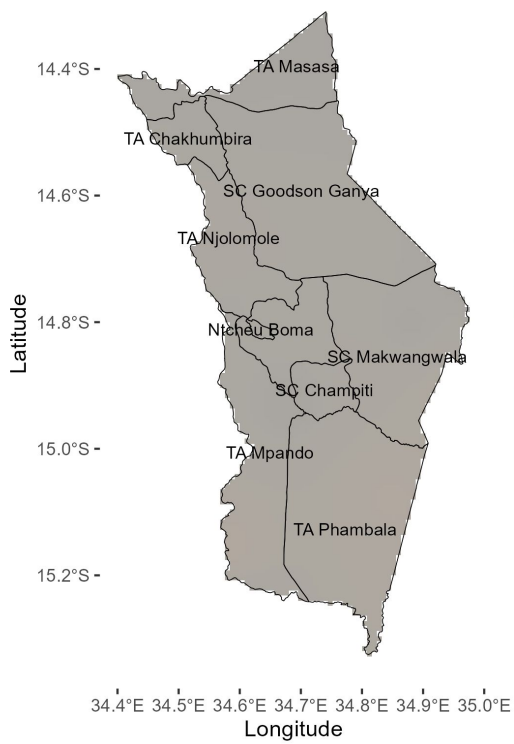
Overview of 2024/2025 Rainfall Season

The 2024-2025 rainfall season is expected to be influenced by a **weak La Nina**. La Nina is the unusual cooling of ocean waters over eastern-central equatorial Pacific Ocean.

Ntcheu district is expected to receive **normal to above normal** rainfall amounts. However, there is chance of **more** rains in the month of February 2025 than that of last year.

October 2024

OCTOBER 2024 RAINFALL FORECAST

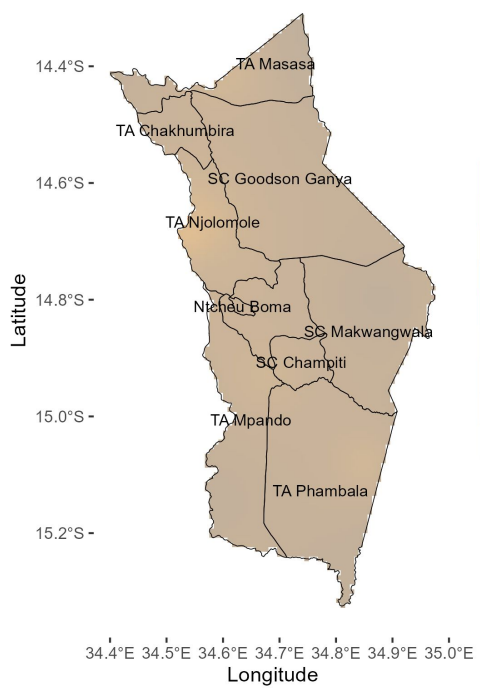


During October, Ntcheu district will receive rainfall in the range of 0 - 30mm.

The first rainfall also known as Chidzimalupsya accompanied by strong winds and lightning is very likely.

November 2024

NOVEMBER 2024 RAINFALL FORECAST

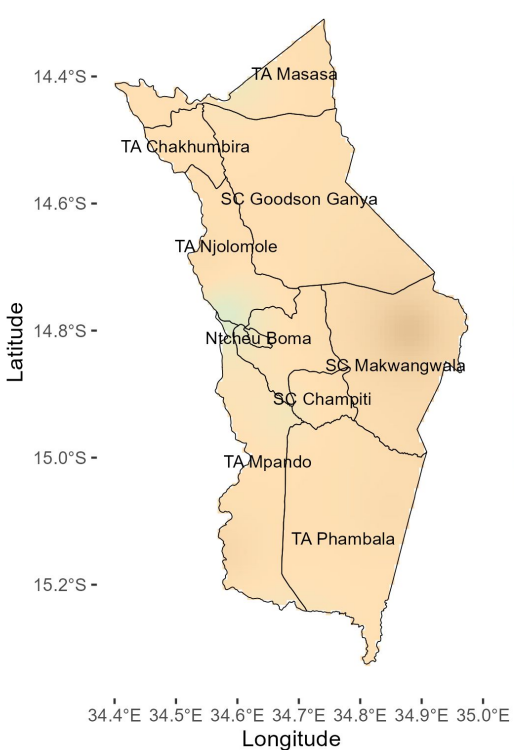


In November, areas of TA Njolomole are expected to receive over 100mm of rainfall. Most areas of the district will receive rainfall amounts in the range of 20 - 50mm.

The onset is expected between the **last week of November and the first week of December**.

December 2024

DECEMBER 2024 RAINFALL FORECAST

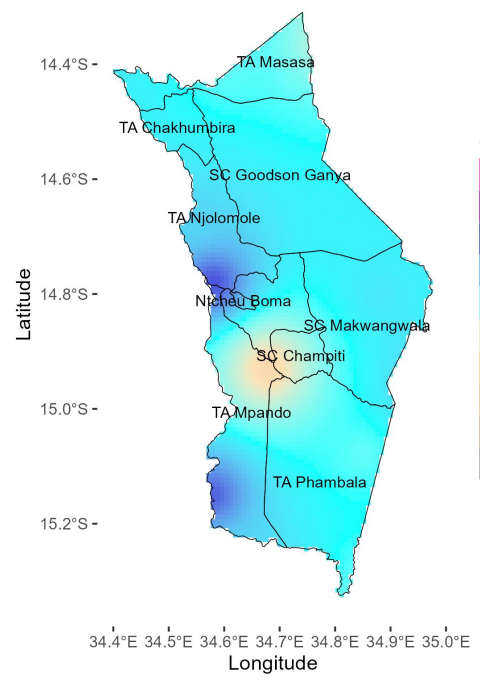


In south west of T/A Njolomole and areas around Ntcheu Boma rainfall amounts exceeding 200mm are expected during the month of December.

However, most areas of the district are expected to receive rainfall amounts in the range of 100 - 160mm.

January 2025

JANUARY 2025 RAINFALL FORECAST

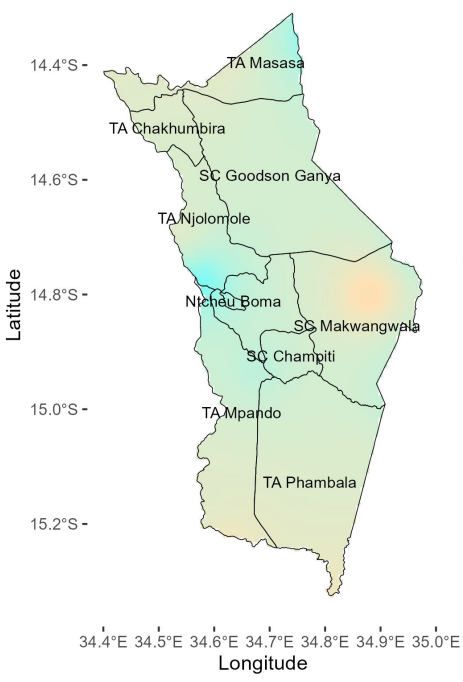


January is expected to be the wettest month of the season. Rainfall of more than 250mm is expected over most areas. The wettest areas include those of TA Njolomole, Ntcheu Boma, and south west of TA Mpando. Rainfall of around 150mm is expected in areas around of SC Champiti.

The likelihood of dry spells of more than 7 days is small.

February 2025

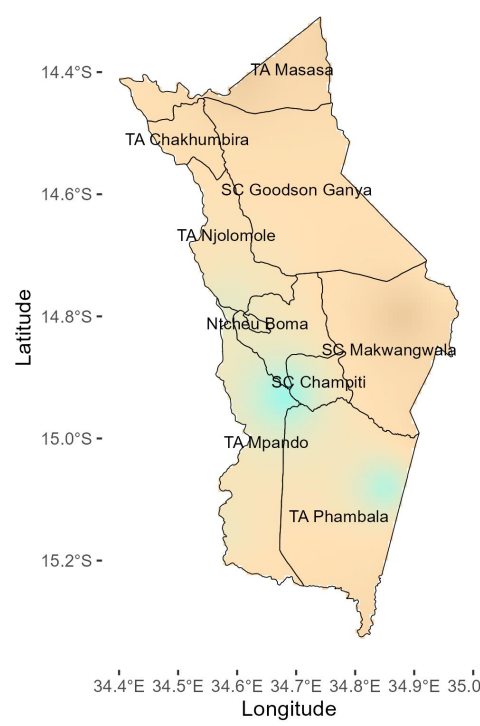
FEBRUARY 2025 RAINFALL FORECAST



Normal to above normal rainfall amounts are expected in February in most parts of the district with rainfall in the range of 200 - 250mm. However some areas around SC Makwangwala are expected to receive rainfall of about 150mm. Dry spells exceeding one week are unlikely.

March 2025

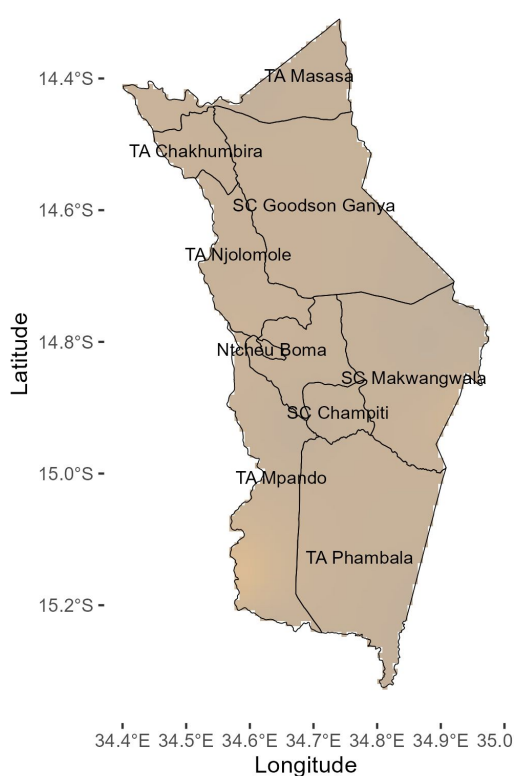
MARCH 2025 RAINFALL FORECAST



Rainfall exceeding 240mm are expected around SC Champiti and North east of TA Phambala while the rest of the areas are expected to receive rainfall in the range of 110 - 150mm

April 2025

APRIL 2025 RAINFALL FORECAST

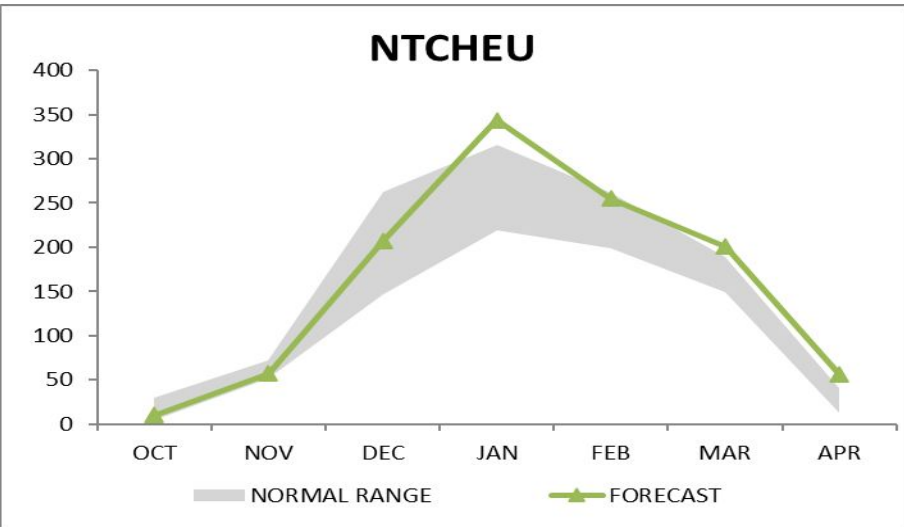


The rainfall cessation is expected by the **second week of April** in many areas of Ntcheu with most areas receiving rainfall in the range of 20 - 70mm.

Ntcheu district is expected to receive **normal to above normal** rainfall amounts. However, there is chance of **more** rains in the month of February 2025 than that of last year. The **Onset** of rainfall in Ntcheu is expected between **last week of November and 1st week of December**. Rainfall **Cessation** is expected from the **2nd week into 3rd week of April**. The **seasonal length** is expected to be between **120 to 150 days**. Dry spells of not more than 7 days are expected in February.

The table and figure below show monthly rainfall distribution for the season with a normal band in grey.

NTCHEU			
MONTH	NORMAL RANGE		FORECAST
OCT	4	29	10
NOV	52	72	57
DEC	147	263	207
JAN	219	315	344
FEB	198	261	255
MAR	149	190	201
APR	14	40	56



The forecast will be updated in December 2024

For further information contact: The Director of Climate Change and Meteorological Services, P.O. Box 1808, Blantyre.
Tel +265 1 82 47 12 / Cell: +265 882 26 65 79 Email: metdept@metmalawi.gov.mw; Website: www.metmalawi.gov.mw

Produced and printed with support from:

