



# MINISTRY OF NATURAL RESOURCE AND CLIMATE CHANGE

Department of Climate Change and Meteorological Services

## MCHINJI DISTRICT DOWNSCALED SEASONAL FORECAST, 2022-2023



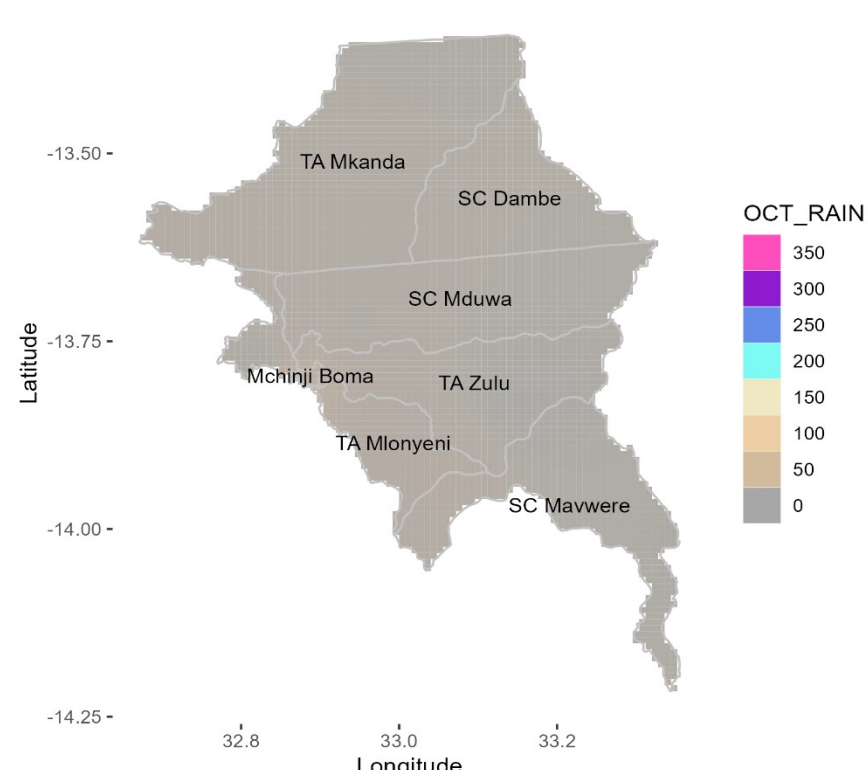
### Overview of 2022/2023 Rainfall Season

The 2022-2023 rainfall season for Malawi is expected to be influenced by La Nina conditions which are projected to prevail until early 2023. La Nina is the unusual cooling of ocean waters over eastern-central equatorial Pacific Ocean.

Mchinji is expected to receive normal to above-normal total rainfall amounts during the rainfall season

### October 2022

OCTOBER 2022 RAINFALL FORECAST

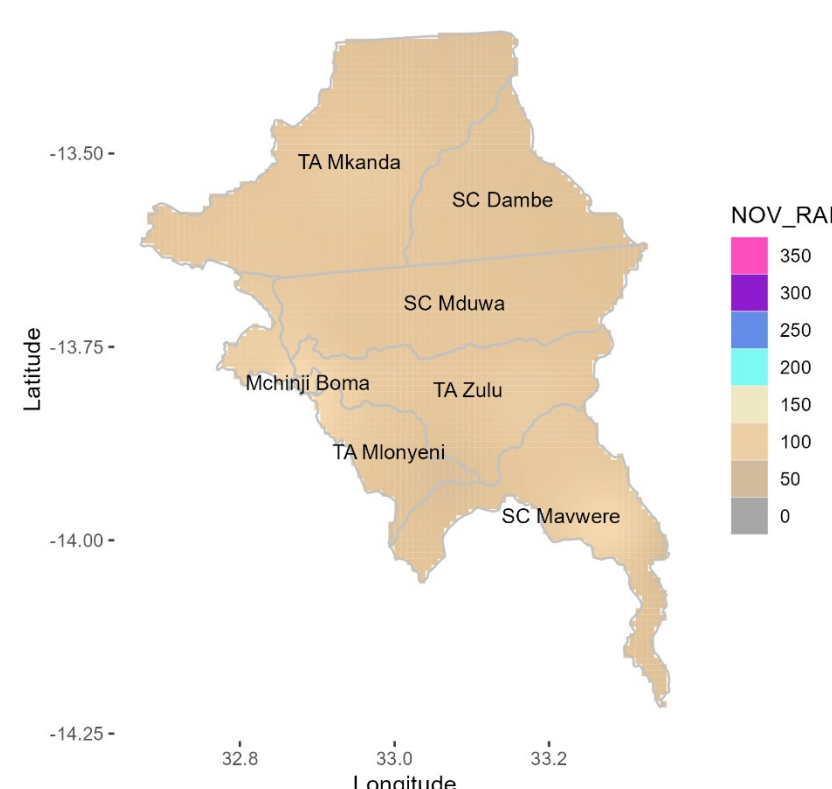


During the month of October, Mchinji district is expected to be generally dry. This is normal for the district. However, *Chizimalupysa* rains are expected with most areas likely receiving rains less than 30mm.

Strong winds and lightning as a result of surface heating and thunderstorms should also be anticipated.

### November 2022

NOVEMBER 2022 RAINFALL FORECAST

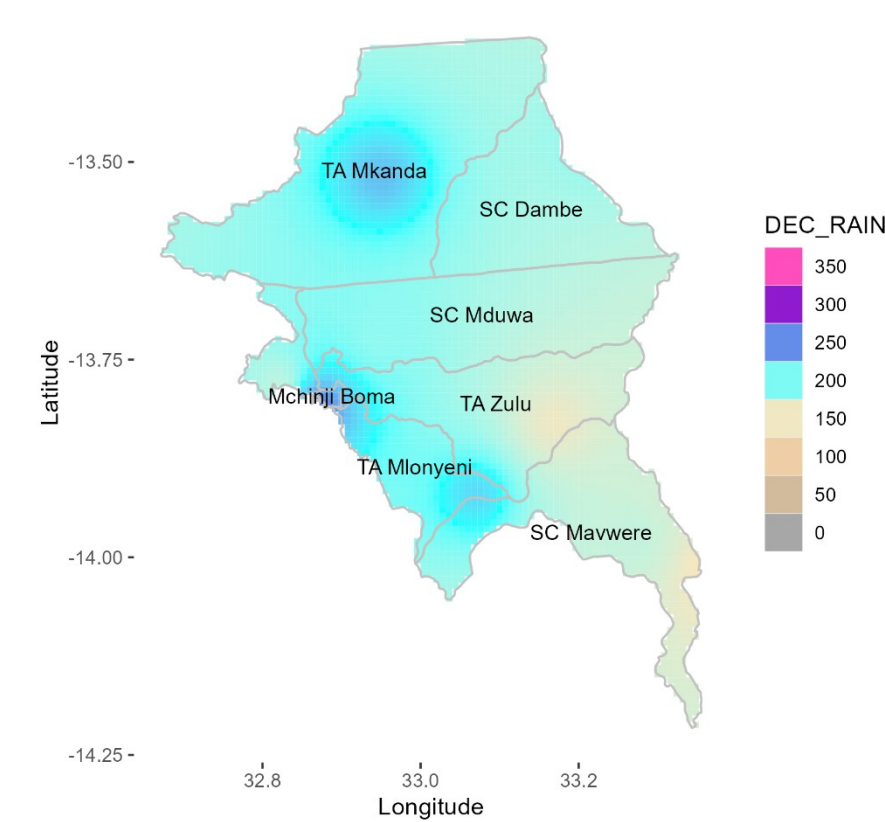


Most areas of Mchinji are likely to receive rainfall below 150mm. This is within the normal conditions for the district. Rainfall onset is expected within the second week of the month of November this is expected to be earlier than normal

Strong winds and lightning as a result of surface heating and thunderstorms should

### December 2022

DECEMBER 2022 RAINFALL FORECAST

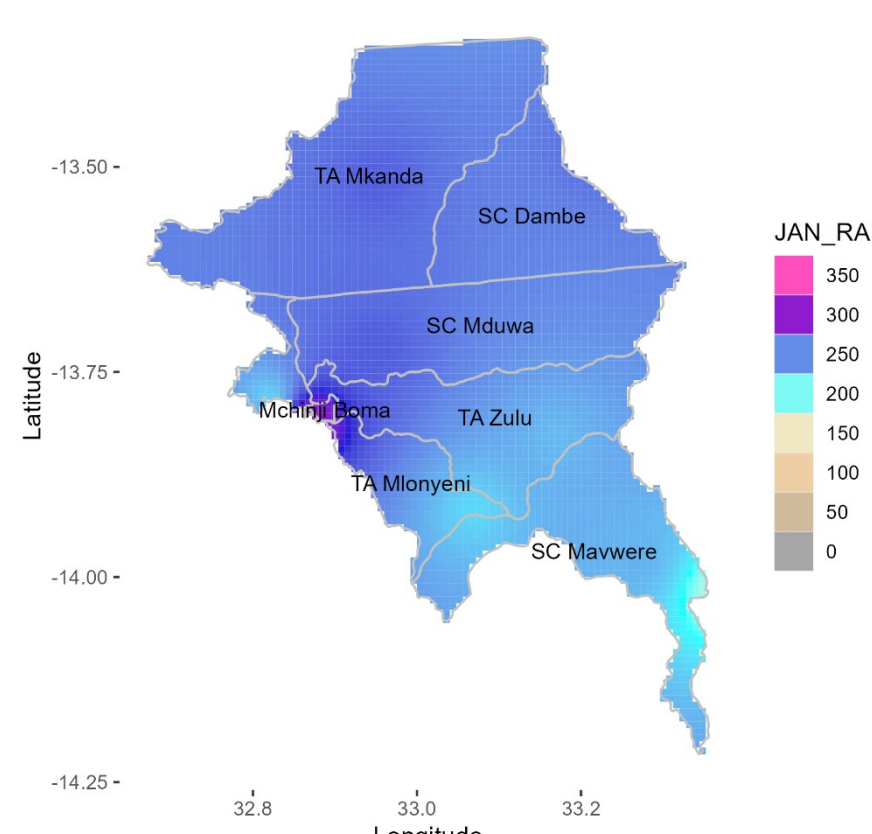


The month of December is expected to be drier than normal in areas around SC Mduwa, TA Zulu and SC Mavwere. Rainfall amounts ranging from 100mm to 250mm are expected over most areas.

Normal rainfall amounts are expected over areas west around Mchinji Boma, TA Mlonyeni, TA Mkanda and SC Dambe, which are also expected to be wetter than

### January 2023

JANUARY 2023 RAINFALL FORECAST

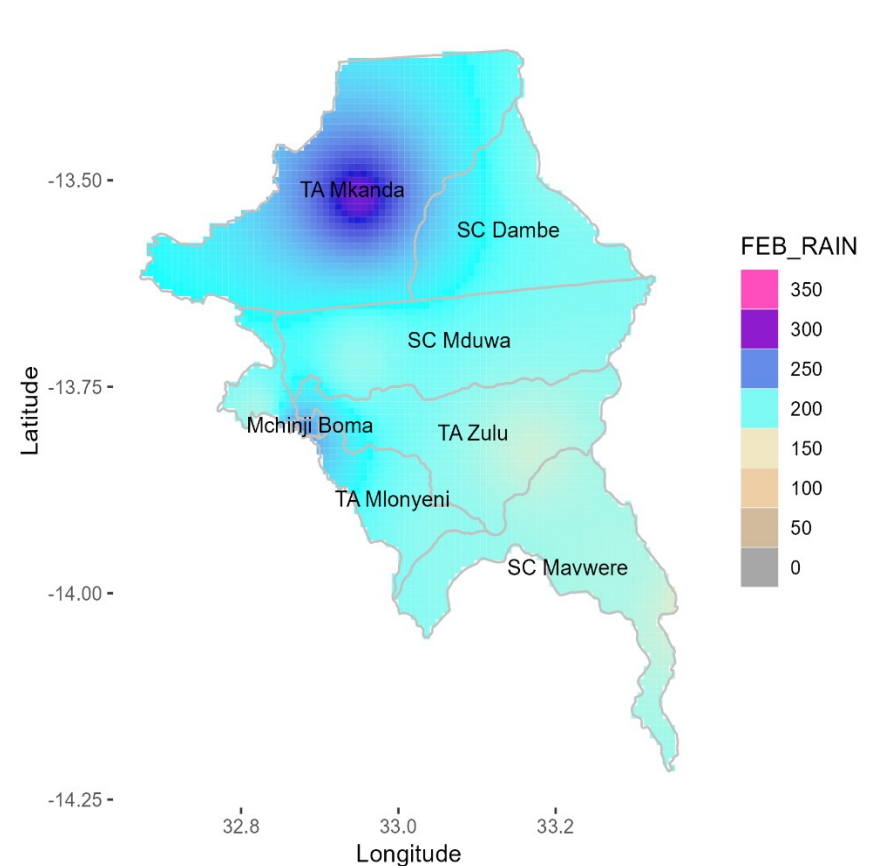


The month of January is expected to be the wetter with normal to above normal rainfall amounts ranging from 200mm to 300mm. Dry spells of about a week are expected within the month

Areas around Mchinji Boma to the west of the district, are expected to be wetter than the rest of the district with rainfall amounts exceeding 300mm expected.

### February 2023

FEBRUARY 2023 RAINFALL FORECAST



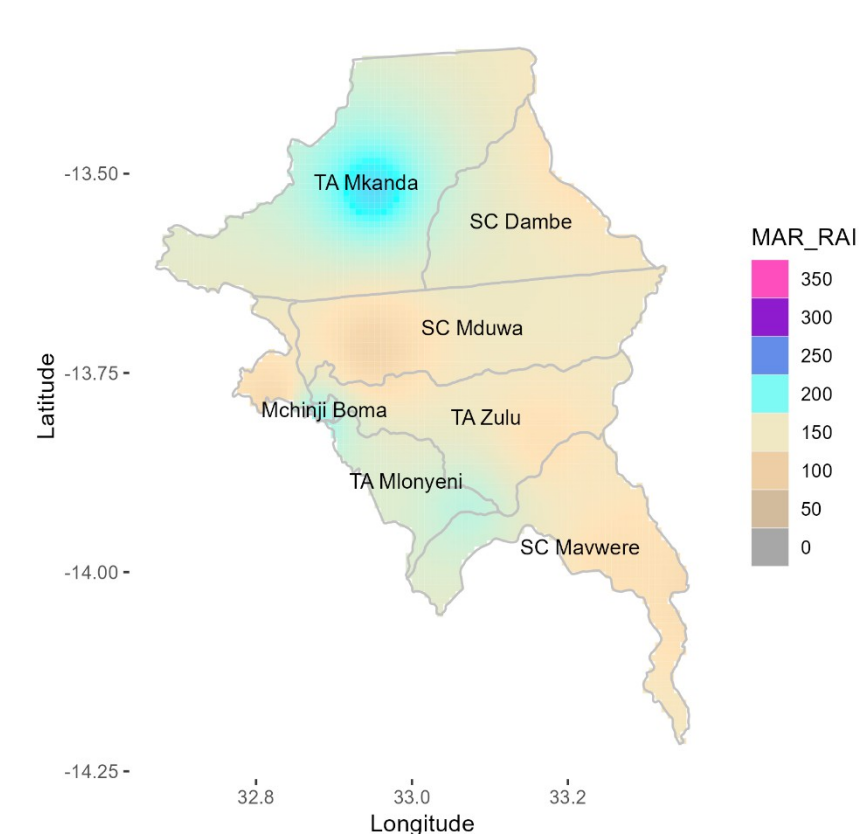
During the month of February, Rainfall amounts ranging from 150mm to 200mm are expected over most areas in Mchinji. Dry spells of around 1 week are expected within the month

Areas around TA Mkanda and Mchinji Boma may experience above normal rainfall amounts during this period.

Normal to below normal rainfall amounts are expected over areas south of TA Mlonyeni.

### March 2023

MARCH 2023 RAINFALL FORECAST

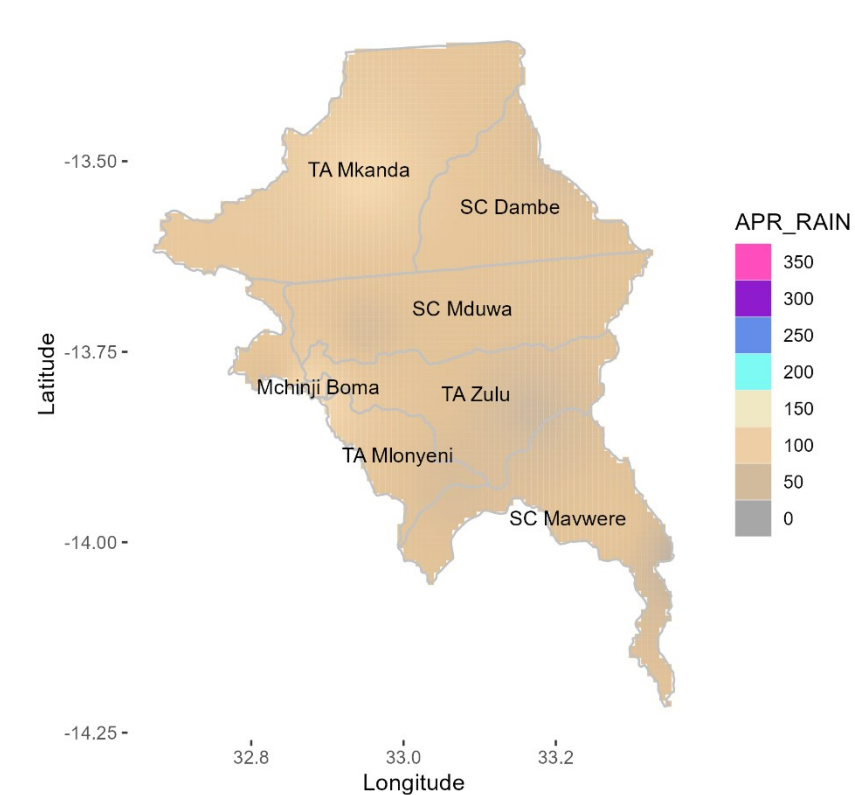


The district is expected to receive rainfall amounts below 150mm, except for Areas around TA Mkanda, TA Mlonyeni and Mchinji boma, which may receive rainfall amounts exceeding 200mm.

The expected rainfall amounts are generally with the normal to above normal range during the month of March, except for areas west of SC Mduwa including Mchinji boma

### April 2023

APRIL 2023 RAINFALL FORECAST



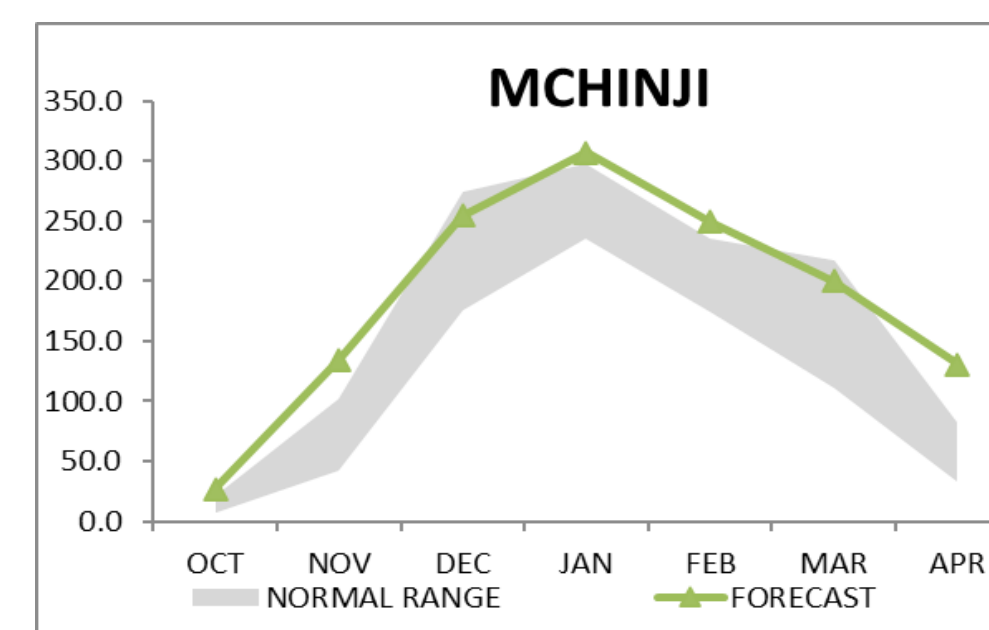
The rainfall cessation is expected in the month of April. The district is expected to receive above normal rainfall amounts during this month. Rainfall cessation is expected within the first and second week of the month

Most areas of the district are expected to receive rainfall amounts of less than 100mm.

Rainfall onset in Mchinji is expected within the second week of the month of November this is expected to be earlier than normal. Rainfall cessation is expected within the first and second week of the month of April. Dry spells of around 1 week are expected within the month of January and February. The seasonal length in the district is expected to be between 140 to 150 days.

The table and figure below shows monthly rainfall distribution for the season with a normal band in grey.

MCHINJI			
MONTH	NORMAL RANGE	FORECAST	
OCT	6.7	21.4	27.2
NOV	42.7	102.4	134.7
DEC	175.6	274.0	254.6
JAN	235.9	298.1	306.8
FEB	174.5	236.0	249.3
MAR	111.5	217.0	199.9
APR	33.5	82.9	130.5



For further information contact:

The Director of Climate Change and Meteorological Services,  
P.O. Box 1808, Blantyre.  
Email: [metdept@metmalawi.gov.mw](mailto:metdept@metmalawi.gov.mw) ; Website:  
[www.metmalawi.gov.mw](http://www.metmalawi.gov.mw)

Produced and printed with support from:

