



MINISTRY OF FORESTRY AND NATURAL RESOURCES

DEPARTMENT OF CLIMATE CHANGE AND METEOROLOGICAL SERVICES

MACHINGA DISTRICT DOWN-SCALED SEASONAL FORECAST, 2022-2023

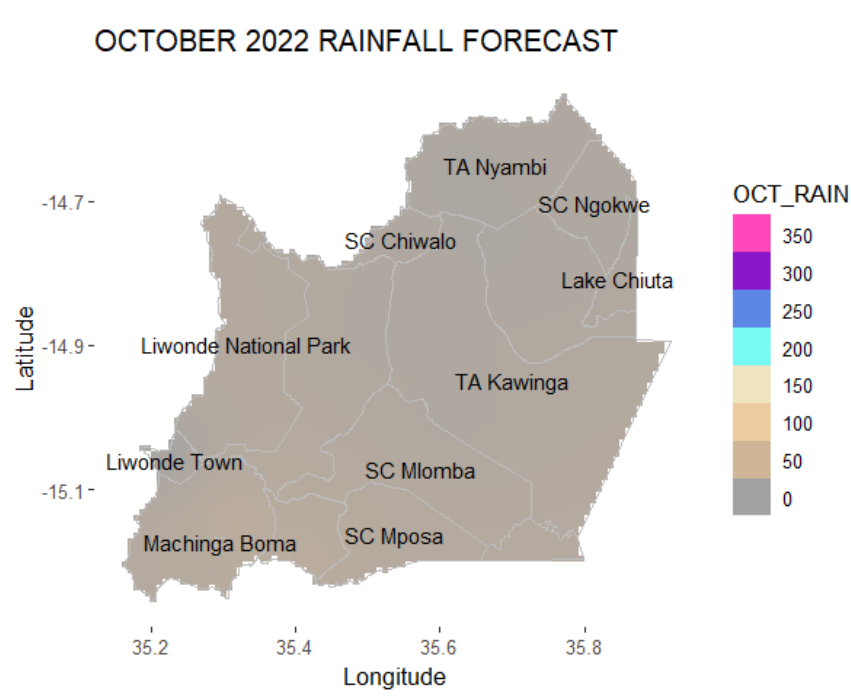


OVERVIEW OF 2022/2023 RAINFALL SEASON

The 2022-2023 rainfall season for Malawi is expected to be influenced by La Nina. La Nina is the unusual cooling of ocean waters over eastern-central equatorial Pacific Ocean.

Machinga is expected to receive generally **normal to above-normal** rainfall amounts during the rainfall season from October 2022 to April 2023.

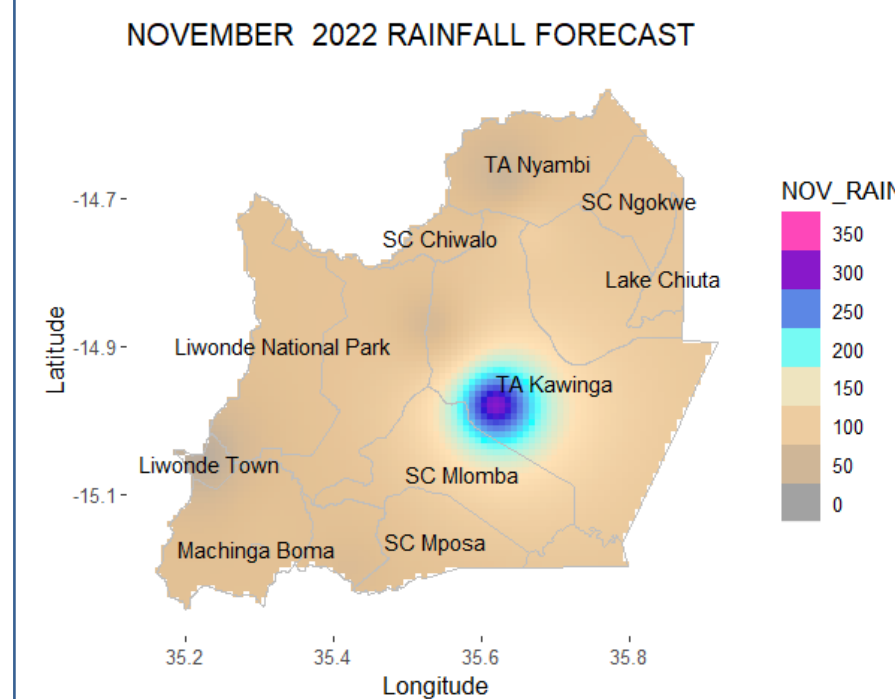
October 2022



October is predicted to be generally dry for Machinga district. The district is still expected to experience localized *Chizimalupsa* rains.

The rains may be accompanied with wind gusts and thunder.

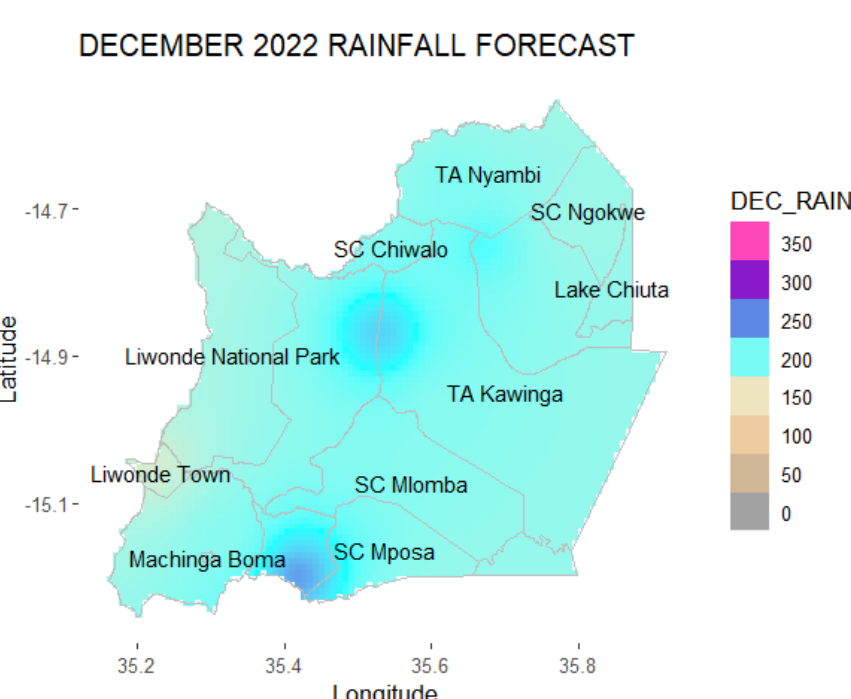
November 2022



Most parts of Machinga are expected to receive rainfall ranging from 30 to 90mm which is within the normal range. Some areas may receive higher amounts. Onset of the season is expected from the second week of November.

Rains may be accompanied by gusty winds and thundery activities

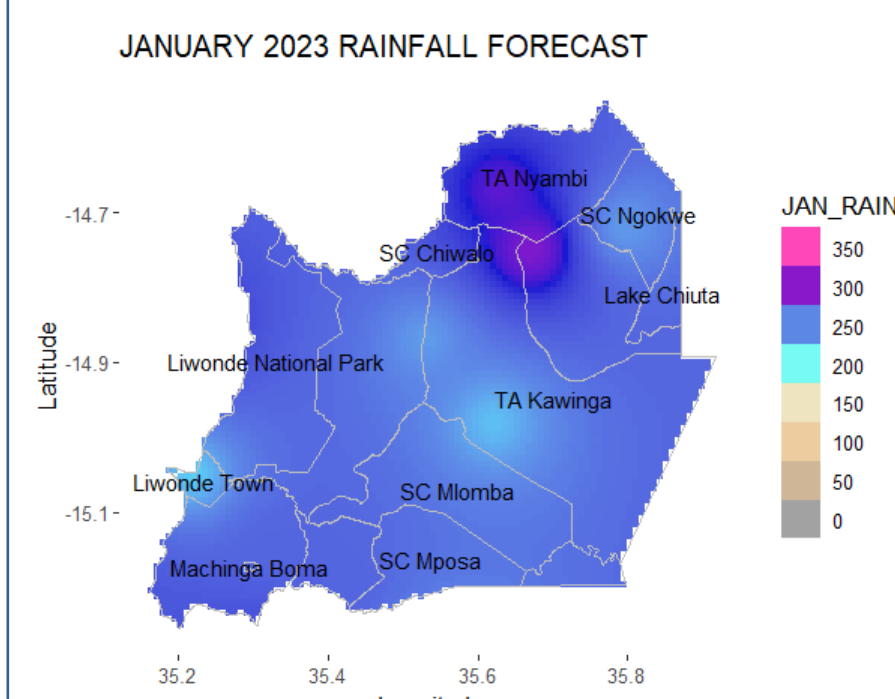
December 2022



Normal to above-normal rainfall amounts in the range from 170 to 250mm are expected in Machinga which will enable planting across the district. High rainfall is likely around the Boma and SC Chiwalo areas.

Strong winds and lightning are expected.

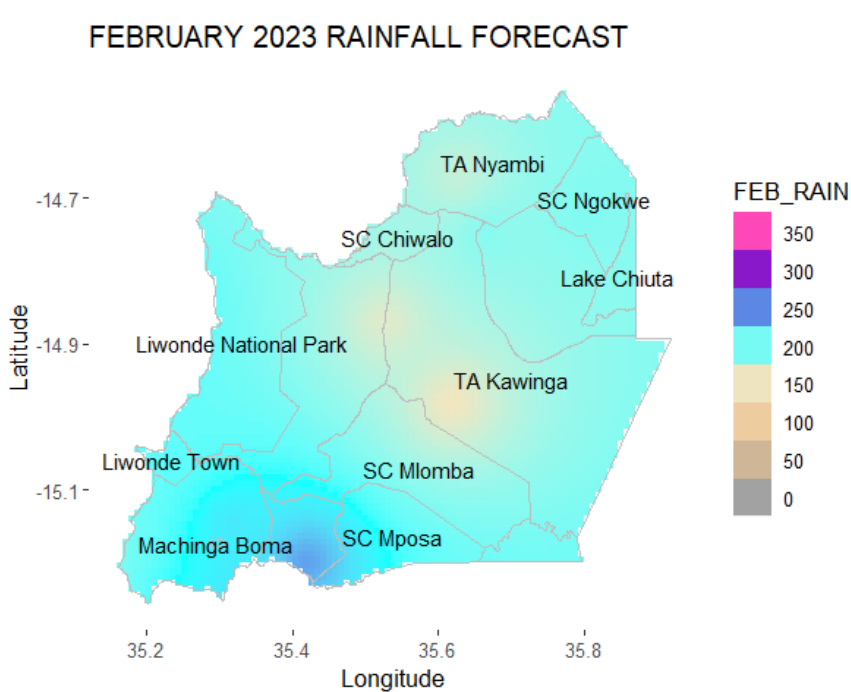
January 2023



Highest rainfall amounts exceeding 200mm are expected in the normal to above-normal range in the month. The north of Machinga is likely to be wetter.

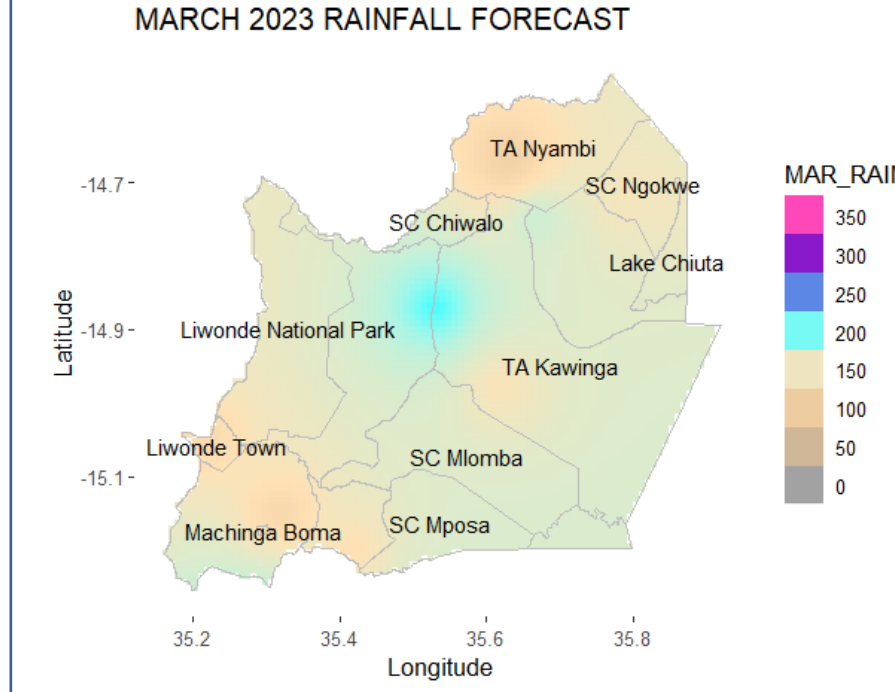
Breaks in rains exceeding 5-7 days will still be possible in most areas.

February 2023



During the month of February central and northern areas under TAs Kawinga, Nyambi and SC Chiwalo may receive normal to below-normal rains between 150-200mm. This indicates likelihood of dry spells. More rains are likely to the south.

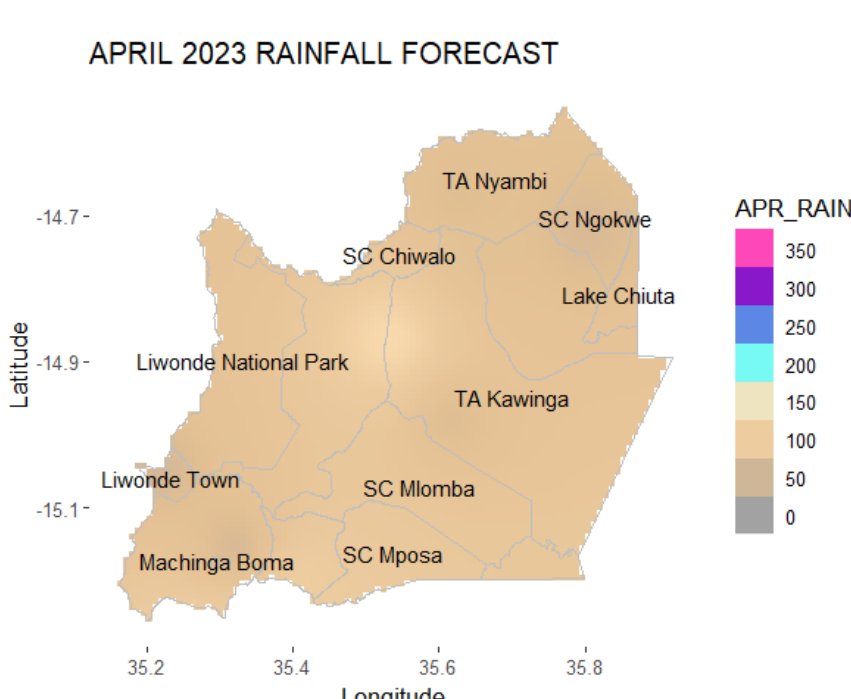
March 2023



Normal to above-normal rains are expected in most parts of Machinga in the range 150-200mm.

Lesser amounts are predicted for TA Nyambi, Liwonde and Boma.

April 2023



The month of April marks the end of the rainfall season for most areas in Malawi.

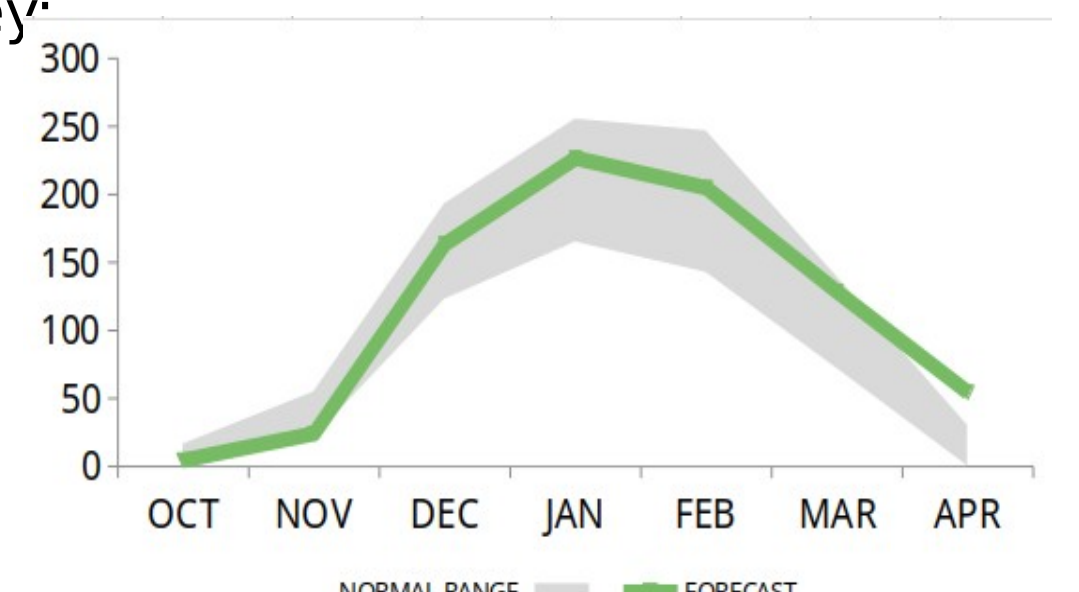
In Machinga district cessation is expected during the second and third week of this month.

Rains in the range 50mm to 130mm are predicted for April.

The onset of rainfall season for Machinga district is expected from the second week of November to first week of December 2022. Cessation is expected from the second week of April 2023. 5 to 10 days dry spells are possible in the months of January and February. The total likelihood of seasonal length for Machinga is from 115 to 135 days.

The table and figure below show monthly rainfall distribution at Ntaja with a normal band in grey:

LIWONDE			
MONTH	NORMAL RANGE		FORECAST
OCT	0.0	16.1	4.6
NOV	20.8	54.5	24.2
DEC	122.5	192.7	163.5
JAN	164.6	255.0	226.6
FEB	142.3	246.4	204.8
MAR	71.7	139.4	128.5
APR	0.1	29.9	54.5



For further information contact:

The Director of Climate Change and Meteorological Services,
P.O. Box 1808, Blantyre.
Email: metdept@metmalawi.gov.mw ; Website:
www.metmalawi.gov.mw

Produced and printed with support from:

